

## Product datasheet for **TA806062**

### Laminin 5 (LAMB3) Mouse Monoclonal Antibody [Clone ID: OTI1D3]

#### Product data:

Product Type:	Primary Antibodies
Clone Name:	OTI1D3
Applications:	IHC
Recommended Dilution:	IHC 1:150
Reactivity:	Human
Host:	Mouse
Isotype:	IgG1
Clonality:	Monoclonal
Immunogen:	Human recombinant protein fragment corresponding to amino acids 22-315 of human LAMB3(NP_000219) produced in E.coli.
Formulation:	PBS (pH 7.3) containing 1% BSA, 50% glycerol and 0.02% sodium azide.
Concentration:	1 mg/ml
Purification:	Purified from mouse ascites fluids or tissue culture supernatant by affinity chromatography (protein A/G)
Conjugation:	Unconjugated
Storage:	Store at -20°C as received.
Stability:	Stable for 12 months from date of receipt.
Predicted Protein Size:	127.6 kDa
Gene Name:	laminin subunit beta 3
Database Link:	<a href="#">NP_000219</a> <a href="#">Entrez Gene 3914 Human</a> <a href="#">Q13751</a>
Background:	The product encoded by this gene is a laminin that belongs to a family of basement membrane proteins. This protein is a beta subunit laminin, which together with an alpha and a gamma subunit, forms laminin-5. Mutations in this gene cause epidermolysis bullosa junctional Herlitz type, and generalized atrophic benign epidermolysis bullosa, diseases that are characterized by blistering of the skin. Multiple alternatively spliced transcript variants that encode the same protein have been found for this gene. [provided by RefSeq, Jul 2008]

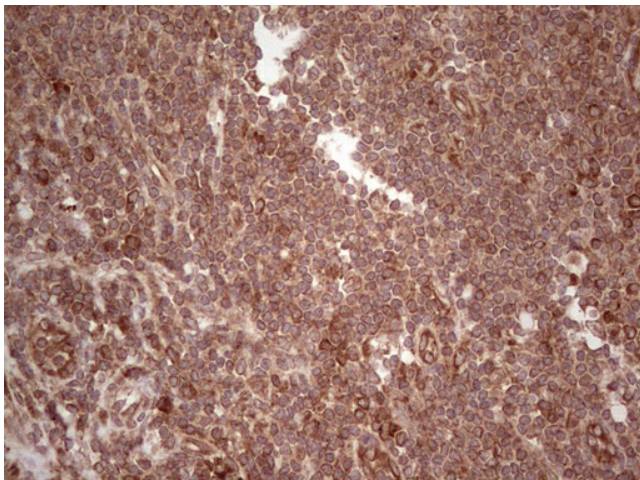


[View online »](#)

**Synonyms:** AI1A; BM600-125KDA; LAM5; LAMNB1

**Protein Families:** Druggable Genome, Secreted Protein

**Protein Pathways:** ECM-receptor interaction, Focal adhesion, Pathways in cancer, Small cell lung cancer

**Product images:**

Immunohistochemical staining of paraffin-embedded Human tonsil within the normal limits using anti-LAMB3 mouse monoclonal antibody. (Heat-induced epitope retrieval by 1mM EDTA in 10mM Tris, pH8.5, 120°C for 3min, TA806062)