

Product datasheet for **TA806051BM**

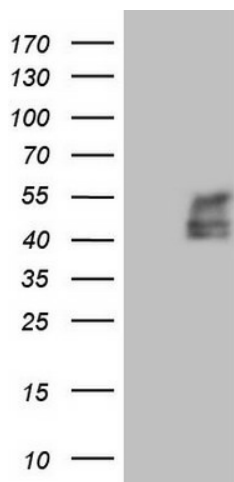
TFPI Mouse Monoclonal Antibody (HRP conjugated) [Clone ID: OTI5A2]

Product data:

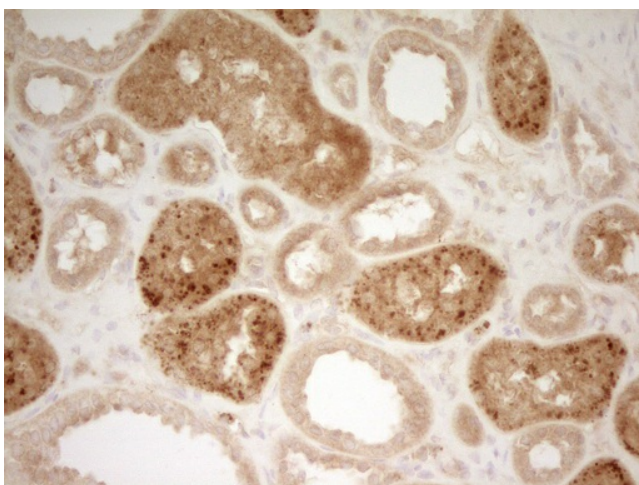
Product Type:	Primary Antibodies
Clone Name:	OTI5A2
Applications:	IHC, WB
Recommended Dilution:	WB 1:100, IHC 1:150
Reactivity:	Human
Host:	Mouse
Isotype:	IgG1
Clonality:	Monoclonal
Immunogen:	Human recombinant protein fragment corresponding to amino acids 29-304 of human TFPI (NP_006278) produced in E.coli.
Formulation:	PBS (pH 7.3) containing 1% BSA, 50% glycerol.
Concentration:	0.5 mg/ml
Purification:	Purified from mouse ascites fluids or tissue culture supernatant by affinity chromatography (protein A/G)
Conjugation:	HRP
Storage:	Store at -20°C as received.
Stability:	Stable for 12 months from date of receipt.
Predicted Protein Size:	31.9 kDa
Gene Name:	tissue factor pathway inhibitor
Database Link:	NP_006278 Entrez Gene 7035 Human P10646
Synonyms:	EPI; LACI; TFI; TFPI1
Protein Families:	Secreted Protein
Protein Pathways:	Complement and coagulation cascades

[View online »](#)

Product images:



HEK293T cells were transfected with the pCMV6-ENTRY control (Left lane) or pCMV6-ENTRY TFPI ([RC219033], Right lane) cDNA for 48 hrs and lysed. Equivalent amounts of cell lysates (5 ug per lane) were separated by SDS-PAGE and immunoblotted with anti-TFPI. Positive lysates [LY401895] (100ug) and [LC401895] (20ug) can be purchased separately from OriGene.



Immunohistochemical staining of paraffin-embedded Human Kidney tissue within the normal limits using anti-TFPI mouse monoclonal antibody. (Heat-induced epitope retrieval by 1mM EDTA in 10mM Tris, pH8.5, 120°C for 3min, [TA806051])



Immunohistochemical staining of paraffin-embedded Carcinoma of Human liver tissue using anti-TFPI mouse monoclonal antibody. (Heat-induced epitope retrieval by 1mM EDTA in 10mM Tris, pH8.5, 120°C for 3min, [TA806051])