

## Product datasheet for **TA806051AM**

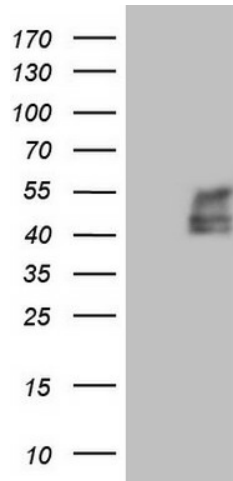
### TFPI Mouse Monoclonal Antibody (Biotin conjugated) [Clone ID: OTI5A2]

#### Product data:

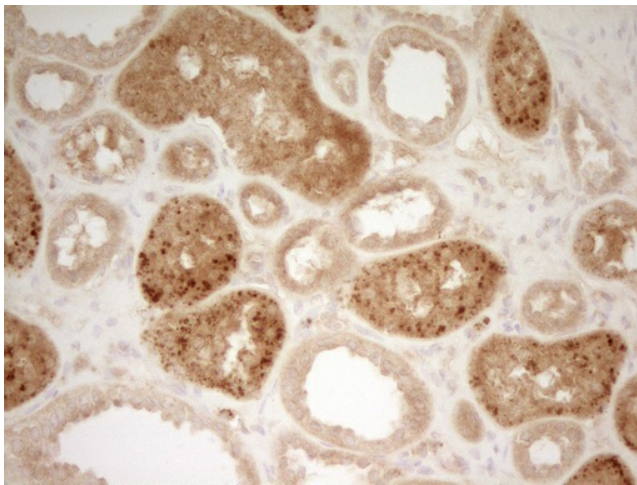
|                         |  |
|-------------------------|--|
| Product Type:           | Primary Antibodies   |
| Clone Name:             | OTI5A2   |
| Applications:           | IHC, WB  |
| Recommended Dilution:   | WB 1:100, IHC 1:150  |
| Reactivity:             | Human  |
| Host:                   | Mouse  |
| Isotype:                | IgG1   |
| Clonality:              | Monoclonal   |
| Immunogen:              | Human recombinant protein fragment corresponding to amino acids 29-304 of human TFPI (NP_006278) produced in E.coli. |
| Formulation:            | PBS (pH 7.3) containing 1% BSA, 50% glycerol and 0.02% sodium azide.   |
| Concentration:          | 0.5 mg/ml  |
| Purification:           | Purified from mouse ascites fluids or tissue culture supernatant by affinity chromatography (protein A/G)            |
| Conjugation:            | Biotin   |
| Storage:                | Store at -20°C as received.  |
| Stability:              | Stable for 12 months from date of receipt.   |
| Predicted Protein Size: | 31.9 kDa   |
| Gene Name:              | tissue factor pathway inhibitor  |
| Database Link:          | <a href="#">NP_006278</a><br><a href="#">Entrez Gene 7035 Human</a><br><a href="#">P10646</a>                        |
| Synonyms:               | EPI; LACI; TFI; TFPI1  |
| Protein Families:       | Secreted Protein   |
| Protein Pathways:       | Complement and coagulation cascades  |



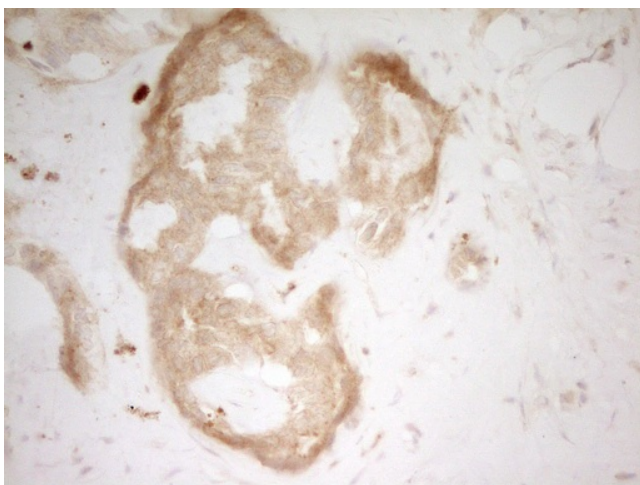
[View online »](#)

**Product images:**

HEK293T cells were transfected with the pCMV6-ENTRY control (Left lane) or pCMV6-ENTRY TFPI ([RC219033], Right lane) cDNA for 48 hrs and lysed. Equivalent amounts of cell lysates (5 ug per lane) were separated by SDS-PAGE and immunoblotted with anti-TFPI. Positive lysates [LY401895] (100ug) and [LC401895] (20ug) can be purchased separately from OriGene.



Immunohistochemical staining of paraffin-embedded Human Kidney tissue within the normal limits using anti-TFPI mouse monoclonal antibody. (Heat-induced epitope retrieval by 1mM EDTA in 10mM Tris, pH8.5, 120°C for 3min, [TA806051])



Immunohistochemical staining of paraffin-embedded Carcinoma of Human liver tissue using anti-TFPI mouse monoclonal antibody. (Heat-induced epitope retrieval by 1mM EDTA in 10mM Tris, pH8.5, 120°C for 3min, [TA806051])