

## Product datasheet for **TA805998**

### TFPI Mouse Monoclonal Antibody [Clone ID: OTI3C2]

#### Product data:

Product Type:	Primary Antibodies
Clone Name:	OTI3C2
Applications:	WB
Recommended Dilution:	WB 1:2000
Reactivity:	Human
Host:	Mouse
Isotype:	IgG1
Clonality:	Monoclonal
Immunogen:	Human recombinant protein fragment corresponding to amino acids 29-304 of human TFPI (NP_006278) produced in E.coli.
Formulation:	PBS (pH 7.3) containing 1% BSA, 50% glycerol and 0.02% sodium azide.
Concentration:	1 mg/ml
Purification:	Purified from mouse ascites fluids or tissue culture supernatant by affinity chromatography (protein A/G)
Conjugation:	Unconjugated
Storage:	Store at -20°C as received.
Stability:	Stable for 12 months from date of receipt.
Predicted Protein Size:	31.9 kDa
Gene Name:	tissue factor pathway inhibitor
Database Link:	<a href="#">NP_006278</a> <a href="#">Entrez Gene 7035 Human</a> <a href="#">P10646</a>



[View online »](#)

**Background:**

This gene encodes a protease inhibitor that regulates the tissue factor (TF)-dependent pathway of blood coagulation. The coagulation process initiates with the formation of a factor VIIa-TF complex, which proteolytically activates additional proteases (factors IX and X) and ultimately leads to the formation of a fibrin clot. The product of this gene inhibits the activated factor X and VIIa-TF proteases in an autoregulatory loop. The encoded protein is glycosylated and predominantly found in the vascular endothelium and plasma in both free forms and complexed with plasma lipoproteins. Several alternatively spliced transcript variants of this gene have been described, but the full-length nature of some of these variants has not been confirmed. [provided by RefSeq, Jul 2008]

**Synonyms:**

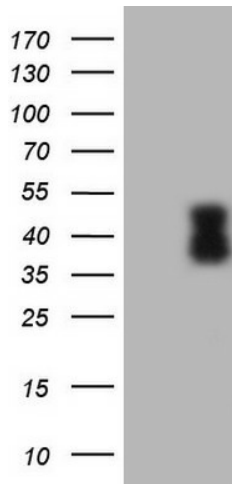
EPI; LACI; TFI; TFPI1

**Protein Families:**

Secreted Protein

**Protein Pathways:**

Complement and coagulation cascades

**Product images:**

HEK293T cells were transfected with the pCMV6-ENTRY control (Left lane) or pCMV6-ENTRY TFPI ([RC219033], Right lane) cDNA for 48 hrs and lysed. Equivalent amounts of cell lysates (5 ug per lane) were separated by SDS-PAGE and immunoblotted with anti-TFPI. Positive lysates [LY401895] (100ug) and [LC401895] (20ug) can be purchased separately from OriGene.