

## Product datasheet for **TA805984AM**

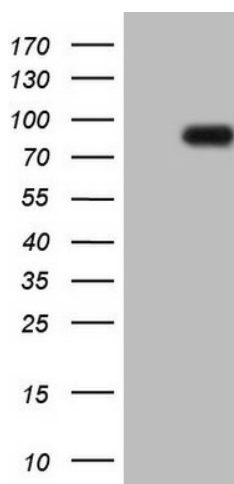
### CLINT1 Mouse Monoclonal Antibody (Biotin conjugated) [Clone ID: OTI8B6]

#### Product data:

Product Type:	Primary Antibodies
Clone Name:	OTI8B6
Applications:	WB
Recommended Dilution:	WB 1:2000
Reactivity:	Human, Mouse, Rat
Host:	Mouse
Isotype:	IgG1
Clonality:	Monoclonal
Immunogen:	Human recombinant protein fragment corresponding to amino acids 1-290 of human CLINT1(NP_055481) produced in E.coli.
Formulation:	PBS (pH 7.3) containing 1% BSA, 50% glycerol and 0.02% sodium azide.
Concentration:	0.5 mg/ml
Purification:	Purified from mouse ascites fluids or tissue culture supernatant by affinity chromatography (protein A/G)
Conjugation:	Biotin
Storage:	Store at -20°C as received.
Stability:	Stable for 12 months from date of receipt.
Gene Name:	clathrin interactor 1
Database Link:	<a href="#">NP_055481</a> <a href="#">Entrez Gene 9685 Human</a> <a href="#">Q14677</a>
Synonyms:	CLINT; ENTH; EPN4; EPNR



[View online »](#)

**Product images:**

HEK293T cells were transfected with the pCMV6-ENTRY control (Left lane) or pCMV6-ENTRY CLINT1 ([RC202387], Right lane) cDNA for 48 hrs and lysed. Equivalent amounts of cell lysates (5 ug per lane) were separated by SDS-PAGE and immunoblotted with anti-CLINT1. Positive lysates [LY402360] (100ug) and [LC402360] (20ug) can be purchased separately from OriGene.