

## Product datasheet for **TA805981M**

### CLINT1 Mouse Monoclonal Antibody [Clone ID: OTI9E1]

#### Product data:

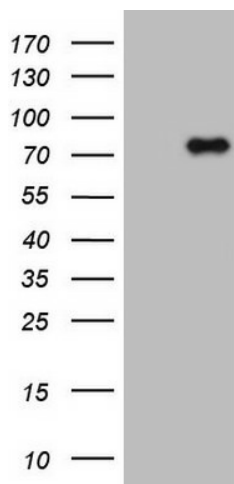
Product Type:	Primary Antibodies
Clone Name:	OTI9E1
Applications:	WB
Recommended Dilution:	WB 1:2000
Reactivity:	Human, Mouse, Rat
Host:	Mouse
Isotype:	IgG1
Clonality:	Monoclonal
Immunogen:	Human recombinant protein fragment corresponding to amino acids 1-290 of human CLINT1(NP_055481) produced in E.coli.
Formulation:	PBS (pH 7.3) containing 1% BSA, 50% glycerol and 0.02% sodium azide.
Concentration:	1 mg/ml
Purification:	Purified from mouse ascites fluids or tissue culture supernatant by affinity chromatography (protein A/G)
Conjugation:	Unconjugated
Storage:	Store at -20°C as received.
Stability:	Stable for 12 months from date of receipt.
Predicted Protein Size:	68.1 kDa
Gene Name:	clathrin interactor 1
Database Link:	<a href="#">NP_055481</a> <a href="#">Entrez Gene 9685 Human</a> <a href="#">Q14677</a>
Background:	This gene encodes a protein with similarity to the epsin family of endocytic adapter proteins. The encoded protein interacts with clathrin, the adapter protein AP-1 and phosphoinositides. This protein may be involved in the formation of clathrin coated vesicles and trafficking between the trans-Golgi network and endosomes. Mutations in this gene are associated with a susceptibility to schizophrenia and psychotic disorders. Alternate splicing results in multiple transcript variants. [provided by RefSeq, Sep 2010]



[View online »](#)

**Synonyms:** CLINT; ENTH; EPN4; EPNR

**Product images:**



HEK293T cells were transfected with the pCMV6-ENTRY control (Left lane) or pCMV6-ENTRY CLINT1 ([RC202387], Right lane) cDNA for 48 hrs and lysed. Equivalent amounts of cell lysates (5 ug per lane) were separated by SDS-PAGE and immunoblotted with anti-CLINT1. Positive lysates [LY402360] (100ug) and [LC402360] (20ug) can be purchased separately from OriGene.