

## Product datasheet for **TA805974S**

### GRK4 Mouse Monoclonal Antibody [Clone ID: OTI4F5]

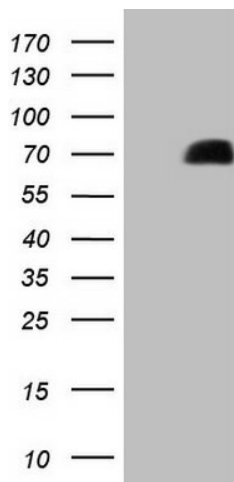
#### Product data:

Product Type:	Primary Antibodies
Clone Name:	OTI4F5
Applications:	WB
Recommended Dilution:	WB 1:500
Reactivity:	Human
Host:	Mouse
Isotype:	IgG1
Clonality:	Monoclonal
Immunogen:	Human recombinant protein fragment corresponding to amino acids 1-245 of human GRK4(NP_892027) produced in E.coli.
Formulation:	PBS (pH 7.3) containing 1% BSA, 50% glycerol and 0.02% sodium azide.
Concentration:	1 mg/ml
Purification:	Purified from mouse ascites fluids or tissue culture supernatant by affinity chromatography (protein A/G)
Conjugation:	Unconjugated
Storage:	Store at -20°C as received.
Stability:	Stable for 12 months from date of receipt.
Predicted Protein Size:	66.4 kDa
Gene Name:	G protein-coupled receptor kinase 4
Database Link:	<a href="#">NP_892027</a> <a href="#">Entrez Gene 2868 Human</a> <a href="#">P32298</a>
Background:	This gene encodes a member of the guanine nucleotide-binding protein (G protein)-coupled receptor kinase subfamily of the Ser/Thr protein kinase family. The protein phosphorylates the activated forms of G protein-coupled receptors thus initiating its deactivation. This gene has been linked to both genetic and acquired hypertension. Several transcript variants encoding different isoforms have been found for this gene. [provided by RefSeq, Nov 2013]



[View online »](#)

**Synonyms:** GPRK2L; GPRK4; GRK4a; IT11  
**Protein Families:** Druggable Genome, Protein Kinase  
**Protein Pathways:** Chemokine signaling pathway, Endocytosis

**Product images:**

HEK293T cells were transfected with the pCMV6-ENTRY control (Left lane) or pCMV6-ENTRY GRK4 ([RC216602], Right lane) cDNA for 48 hrs and lysed. Equivalent amounts of cell lysates (5 ug per lane) were separated by SDS-PAGE and immunoblotted with anti-GRK4 (1:500). Positive lysates [LY405296] (100ug) and [LC405296] (20ug) can be purchased separately from OriGene.