

Product datasheet for **TA805955M**

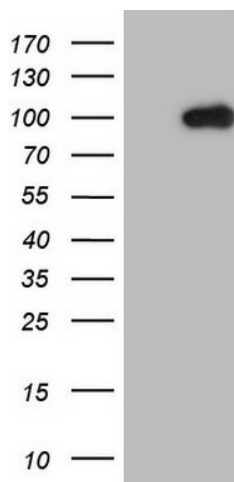
MARK3 Mouse Monoclonal Antibody [Clone ID: OTI5E5]

Product data:

Product Type:	Primary Antibodies
Clone Name:	OTI5E5
Applications:	WB
Recommended Dilution:	WB 1:2000
Reactivity:	Human, Mouse, Rat
Host:	Mouse
Isotype:	IgG2b
Clonality:	Monoclonal
Immunogen:	Human recombinant protein fragment corresponding to amino acids 473-729 of human MARK3(NP_002367) produced in E.coli.
Formulation:	PBS (pH 7.3) containing 1% BSA, 50% glycerol and 0.02% sodium azide.
Concentration:	1 mg/ml
Purification:	Purified from mouse ascites fluids or tissue culture supernatant by affinity chromatography (protein A/G)
Conjugation:	Unconjugated
Storage:	Store at -20°C as received.
Stability:	Stable for 12 months from date of receipt.
Predicted Protein Size:	81.3 kDa
Gene Name:	microtubule affinity regulating kinase 3
Database Link:	NP_002367 Entrez Gene 17169 Mouse Entrez Gene 170577 Rat Entrez Gene 4140 Human P27448
Background:	The protein encoded by this gene is activated by phosphorylation and in turn is involved in the phosphorylation of tau proteins MAP2 and MAP4. Several transcript variants encoding different isoforms have been found for this gene. [provided by RefSeq, Oct 2011]
Synonyms:	CTAK1; KP78; Par-1a; PAR1A
Protein Families:	Druggable Genome, Protein Kinase



[View online »](#)

Product images:


HEK293T cells were transfected with the pCMV6-ENTRY control (Left lane) or pCMV6-ENTRY MARK3 [RC205758], Right lane) cDNA for 48 hrs and lysed. Equivalent amounts of cell lysates (5 ug per lane) were separated by SDS-PAGE and immunoblotted with anti-MARK3. Positive lysates [LY400851] (100ug) and [LC400851] (20ug) can be purchased separately from OriGene.