

Product datasheet for **TA805923AM**

Factor I (CFI) Mouse Monoclonal Antibody (Biotin conjugated) [Clone ID: OTI6C1]

Product data:

Product Type:	Primary Antibodies
Clone Name:	OTI6C1
Applications:	WB
Recommended Dilution:	WB 1:2000
Reactivity:	Human
Host:	Mouse
Isotype:	IgG1
Clonality:	Monoclonal
Immunogen:	Human recombinant protein fragment corresponding to amino acids 340-583 of human CFI(NP_000195) produced in E.coli.
Formulation:	PBS (pH 7.3) containing 1% BSA, 50% glycerol and 0.02% sodium azide.
Concentration:	0.5 mg/ml
Purification:	Purified from mouse ascites fluids or tissue culture supernatant by affinity chromatography (protein A/G)
Conjugation:	Biotin
Storage:	Store at -20°C as received.
Stability:	Stable for 12 months from date of receipt.
Predicted Protein Size:	63.4 kDa
Gene Name:	complement factor I
Database Link:	NP_000195 Entrez Gene 3426 Human P05156



[View online »](#)

Background:

This gene encodes a serine proteinase that is essential for regulating the complement cascade. The encoded preproprotein is cleaved to produce both heavy and light chains, which are linked by disulfide bonds to form a heterodimeric glycoprotein. This heterodimer can cleave and inactivate the complement components C4b and C3b, and it prevents the assembly of the C3 and C5 convertase enzymes. Defects in this gene cause complement factor I deficiency, an autosomal recessive disease associated with a susceptibility to pyogenic infections. Mutations in this gene have been associated with a predisposition to atypical hemolytic uraemic syndrome, a disease characterized by acute renal failure, microangiopathic hemolytic anemia and thrombocytopenia. Primary glomerulonephritis with immune deposits is another condition associated with mutation of this gene. [provided by RefSeq, Jul 2008]

Synonyms:

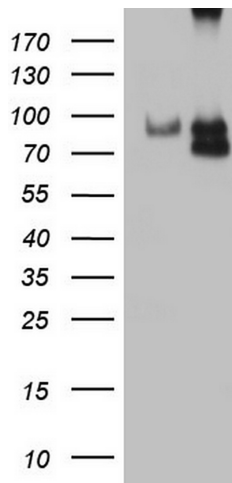
AHUS3; ARMD13; C3b-INA; C3BINA; FI; IF; KAF

Protein Families:

Druggable Genome, Protease, Secreted Protein

Protein Pathways:

Complement and coagulation cascades

Product images:

HEK293T cells were transfected with the pCMV6-ENTRY control (Left lane) or pCMV6-ENTRY CFI ([RC216645], Right lane) cDNA for 48 hrs and lysed. Equivalent amounts of cell lysates (5 ug per lane) were separated by SDS-PAGE and immunoblotted with anti-CFI. Positive lysates [LY424865] (100ug) and [LC424865] (20ug) can be purchased separately from OriGene.