

Product datasheet for **TA805899M**

Factor I (CFI) Mouse Monoclonal Antibody [Clone ID: OTI4E9]

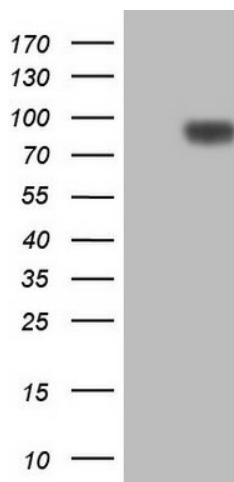
Product data:

Product Type:	Primary Antibodies
Clone Name:	OTI4E9
Applications:	WB
Recommended Dilution:	WB 1:2000
Reactivity:	Human
Host:	Mouse
Isotype:	IgG2a
Clonality:	Monoclonal
Immunogen:	Human recombinant protein fragment corresponding to amino acids 340-583 of human CFI(NP_000195) produced in E.coli.
Formulation:	PBS (pH 7.3) containing 1% BSA, 50% glycerol and 0.02% sodium azide.
Concentration:	1 mg/ml
Purification:	Purified from mouse ascites fluids or tissue culture supernatant by affinity chromatography (protein A/G)
Conjugation:	Unconjugated
Storage:	Store at -20°C as received.
Stability:	Stable for 12 months from date of receipt.
Predicted Protein Size:	63.4 kDa
Gene Name:	complement factor I
Database Link:	NP_000195 Entrez Gene 3426 Human P05156
Synonyms:	AHUS3; ARMD13; C3b-INA; C3BINA; FI; IF; KAF
Protein Families:	Druggable Genome, Protease, Secreted Protein
Protein Pathways:	Complement and coagulation cascades



[View online »](#)

Product images:



HEK293T cells were transfected with the pCMV6-ENTRY control (Left lane) or pCMV6-ENTRY CFI ([RC216645], Right lane) cDNA for 48 hrs and lysed. Equivalent amounts of cell lysates (5 ug per lane) were separated by SDS-PAGE and immunoblotted with anti-CFI. Positive lysates [LY424865] (100ug) and [LC424865] (20ug) can be purchased separately from OriGene.