

Product datasheet for **TA805868AM**

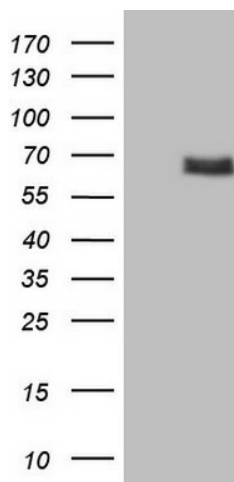
SUOX Mouse Monoclonal Antibody (Biotin conjugated) [Clone ID: OTI3C2]

Product data:

Product Type:	Primary Antibodies
Clone Name:	OTI3C2
Applications:	WB
Recommended Dilution:	WB 1:2000
Reactivity:	Human, Mouse, Rat
Host:	Mouse
Isotype:	IgG1
Clonality:	Monoclonal
Immunogen:	Human recombinant protein fragment corresponding to amino acids 320-545 of human SUOX(NP_000447) produced in E.coli.
Formulation:	PBS (pH 7.3) containing 1% BSA, 50% glycerol and 0.02% sodium azide.
Concentration:	0.5 mg/ml
Purification:	Purified from mouse ascites fluids or tissue culture supernatant by affinity chromatography (protein A/G)
Conjugation:	Biotin
Storage:	Store at -20°C as received.
Stability:	Stable for 12 months from date of receipt.
Gene Name:	sulfite oxidase
Database Link:	NP_000447 Entrez Gene 81805 Rat Entrez Gene 211389 Mouse Entrez Gene 6821 Human P51687
Synonyms:	OTTHUMP00000158619; sulfite oxidase
Protein Families:	Druggable Genome
Protein Pathways:	Sulfur metabolism



[View online »](#)

Product images:

HEK293T cells were transfected with the pCMV6-ENTRY control (Left lane) or pCMV6-ENTRY SUOX ([RC209066], Right lane) cDNA for 48 hrs and lysed. Equivalent amounts of cell lysates (5 ug per lane) were separated by SDS-PAGE and immunoblotted with anti-SUOX. Positive lysates [LY424706] (100ug) and [LC424706] (20ug) can be purchased separately from OriGene.