

Product datasheet for **TA805834S**

Gemin 8 (GEMIN8) Mouse Monoclonal Antibody [Clone ID: OTI4B12]

Product data:

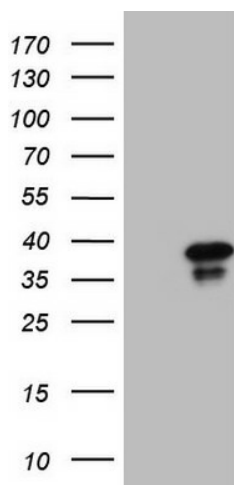
Product Type:	Primary Antibodies
Clone Name:	OTI4B12
Applications:	WB
Recommended Dilution:	WB 1:2000
Reactivity:	Human
Host:	Mouse
Isotype:	IgG1
Clonality:	Monoclonal
Immunogen:	Full length human recombinant protein of human GEMIN8 (NP_060326) produced in E.coli.
Formulation:	PBS (pH 7.3) containing 1% BSA, 50% glycerol and 0.02% sodium azide.
Concentration:	1 mg/ml
Purification:	Purified from mouse ascites fluids or tissue culture supernatant by affinity chromatography (protein A/G)
Conjugation:	Unconjugated
Storage:	Store at -20°C as received.
Stability:	Stable for 12 months from date of receipt.
Predicted Protein Size:	28.5 kDa
Gene Name:	gem nuclear organelle associated protein 8
Database Link:	NP_060326 Entrez Gene 54960 Human Q9NWZ8
Background:	The protein encoded by this gene is part of the SMN complex, which is necessary for spliceosomal snRNP assembly in the cytoplasm and pre-mRNA splicing in the nucleus. The encoded protein binds to both SMN1 and the GEMIN6/GEMIN7 heterodimer, mediating their interaction. This protein is found in nuclear Gemini of Cajal bodies (gems) and in the cytoplasm. Three transcript variants encoding the same protein have been found for this gene. [provided by RefSeq, May 2010]



[View online »](#)

Synonyms: FAM51A1

Product images:



HEK293T cells were transfected with the pCMV6-ENTRY control (Left lane) or pCMV6-ENTRY GEMIN8 ([RC213444], Right lane) cDNA for 48 hrs and lysed. Equivalent amounts of cell lysates (5 ug per lane) were separated by SDS-PAGE and immunoblotted with anti-GEMIN8. Positive lysates [LY413420] (100ug) and [LC413420] (20ug) can be purchased separately from OriGene.