

## Product datasheet for **TA805825AM**

### ROS1 Mouse Monoclonal Antibody (Biotin conjugated) [Clone ID: OTI7E4]

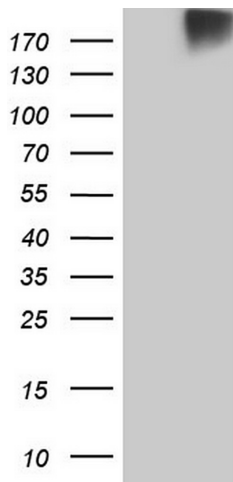
#### Product data:

Product Type:	Primary Antibodies
Clone Name:	OTI7E4
Applications:	IF, IHC, WB
Recommended Dilution:	WB 1:2000, IHC 1:5000
Reactivity:	Human
Host:	Mouse
Isotype:	IgG1
Clonality:	Monoclonal
Immunogen:	Human recombinant protein fragment corresponding to amino acids 2126-2347 of human ROS1(NP_002935) produced in E.coli.
Formulation:	PBS (pH 7.3) containing 1% BSA, 50% glycerol and 0.02% sodium azide.
Concentration:	0.5 mg/ml
Purification:	Purified from mouse ascites fluids or tissue culture supernatant by affinity chromatography (protein A/G)
Conjugation:	Biotin
Storage:	Store at -20°C as received.
Stability:	Stable for 12 months from date of receipt.
Gene Name:	ROS proto-oncogene 1, receptor tyrosine kinase
Database Link:	<a href="#">NP_002935</a> <a href="#">Entrez Gene 6098 Human</a> <a href="#">P08922</a>
Synonyms:	c-ros-1; MCF3; ROS
Protein Families:	Druggable Genome, Protein Kinase, Transmembrane

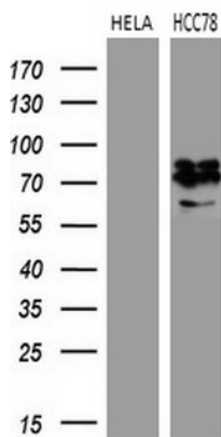


[View online »](#)

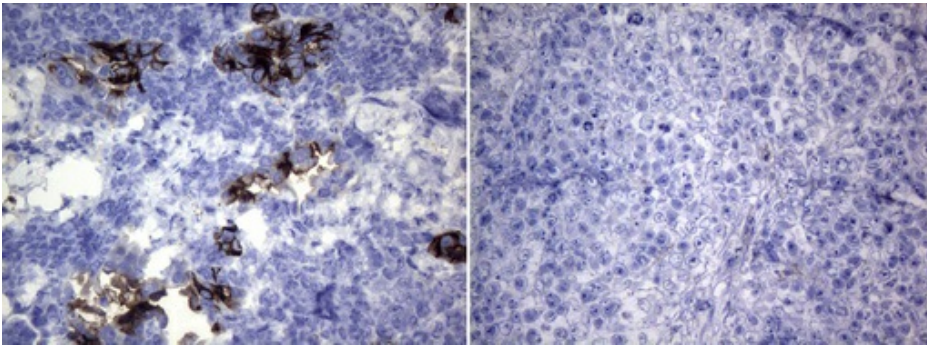
Product images:



HEK293T cells were transfected with the pCMV6-ENTRY control (Left lane) or pCMV6-ENTRY ROS1 ([RC220652], Right lane) cDNA for 48 hrs and lysed. Equivalent amounts of cell lysates (5 ug per lane) were separated by SDS-PAGE and immunoblotted with anti-ROS1.



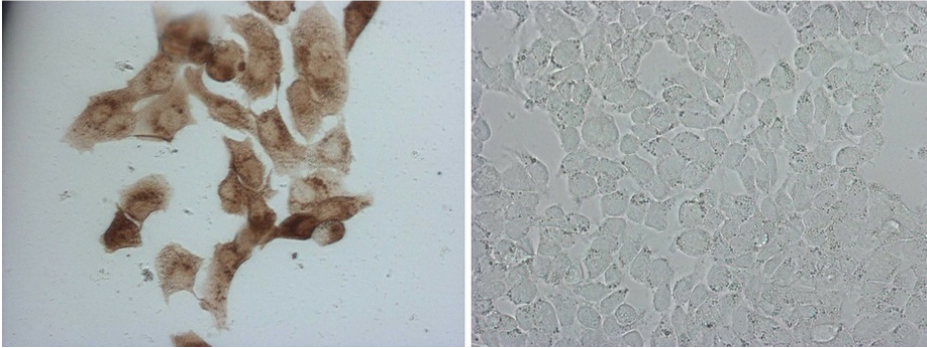
Western blot analysis of extracts (35ug) from 2 different cell lines by using anti-ROS1 monoclonal antibody (1:500).



Immunohistochemical staining of paraffin-embedded HCC78 (left) and HeLa (right) xenograft using [TA805825] (0.2ug/ml). (Heat-induced epitope retrieval by 1mM EDTA in 10mM Tris buffer (pH8.0) at 120°C for 3min)

**HCC78**

**HELA**



Immunocytochemistry staining of HCC78 cells using anti-ROS1 mouse monoclonal antibody ([TA805825]) (Left). The right is HELA cells as negative control (1:2000).