

## Product datasheet for **TA805823BM**

### Neurofilament (NEFM) Mouse Monoclonal Antibody (HRP conjugated) [Clone ID: OTI2G3]

#### Product data:

Product Type:	Primary Antibodies
Clone Name:	OTI2G3
Applications:	IHC, WB
Recommended Dilution:	WB 1:2000, IHC 1:150
Reactivity:	Human
Host:	Mouse
Isotype:	IgG1
Clonality:	Monoclonal
Immunogen:	Human recombinant protein fragment corresponding to amino acids 413-773 of human NEFM(NP_005373) produced in E.coli.
Formulation:	PBS (pH 7.3) containing 1% BSA, 50% glycerol.
Concentration:	0.5 mg/ml
Purification:	Purified from mouse ascites fluids or tissue culture supernatant by affinity chromatography (protein A/G)
Conjugation:	HRP
Storage:	Store at -20°C as received.
Stability:	Stable for 12 months from date of receipt.
Predicted Protein Size:	102.3 kDa
Gene Name:	neurofilament, medium polypeptide
Database Link:	<a href="#">NP_005373</a> <a href="#">Entrez Gene 4741 Human</a> <a href="#">P07197</a>
Background:	Neurofilaments are type IV intermediate filament heteropolymers composed of light, medium, and heavy chains. Neurofilaments comprise the axoskeleton and functionally maintain neuronal caliber. They may also play a role in intracellular transport to axons and dendrites. This gene encodes the medium neurofilament protein. This protein is commonly used as a biomarker of neuronal damage. Alternative splicing results in multiple transcript variants encoding distinct isoforms. [provided by RefSeq, Oct 2008]

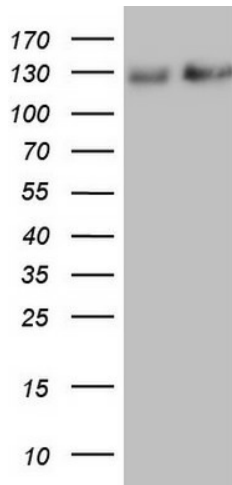


[View online »](#)

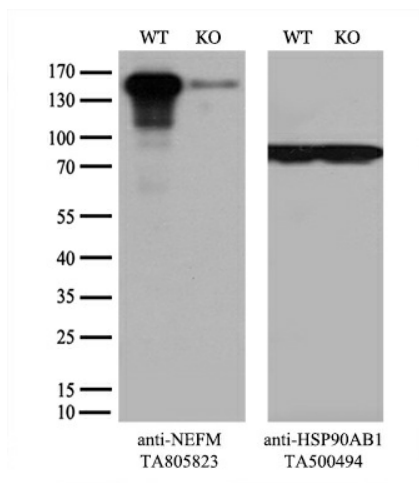
**Synonyms:** NEF3; NF-M; NFM

**Protein Pathways:** Amyotrophic lateral sclerosis (ALS)

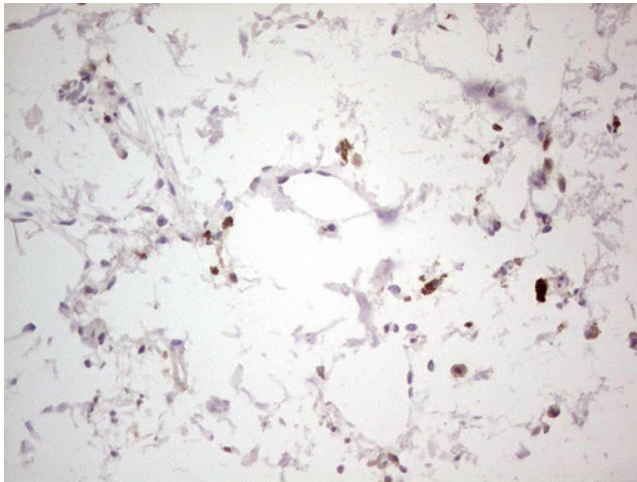
**Product images:**



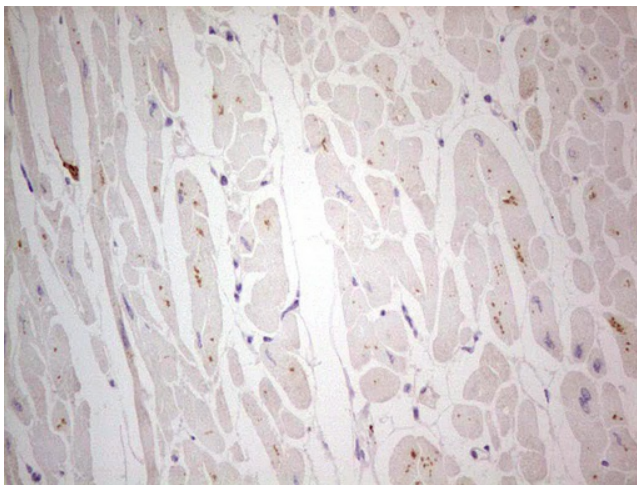
HEK293T cells were transfected with the pCMV6-ENTRY control (Left lane) or pCMV6-ENTRY NEFM [RC224475], Right lane) cDNA for 48 hrs and lysed. Equivalent amounts of cell lysates (5 ug per lane) were separated by SDS-PAGE and immunoblotted with anti-NEFM. Positive lysates [LY417338] (100ug) and [LC417338] (20ug) can be purchased separately from OriGene.



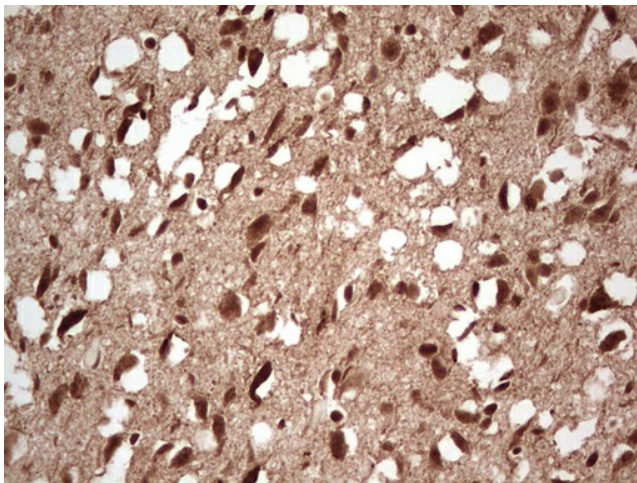
Equivalent amounts of cell lysates (10 ug per lane) of wild-type 293T cells (WT, Cat# LC810293T) and NEFM-Knockout 293T cells (KO, Cat# [LC810526]) were separated by SDS-PAGE and immunoblotted with anti-NEFM monoclonal antibody [TA805823], (1:5000). Then the blotted membrane was stripped and reprobed with anti-HSP90AB1 antibody ([TA500494]) as a loading control.



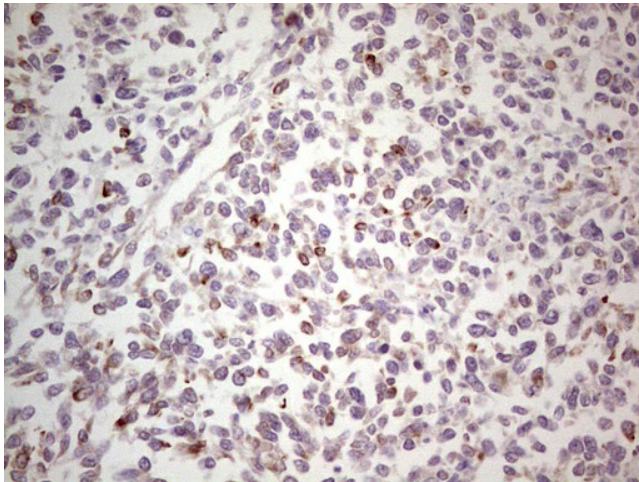
Immunohistochemical staining of paraffin-embedded Human skin tissue using anti-NEFM mouse monoclonal antibody. (Heat-induced epitope retrieval by 1mM EDTA in 10mM Tris, pH8.5, 120°C for 3min, [TA805823])



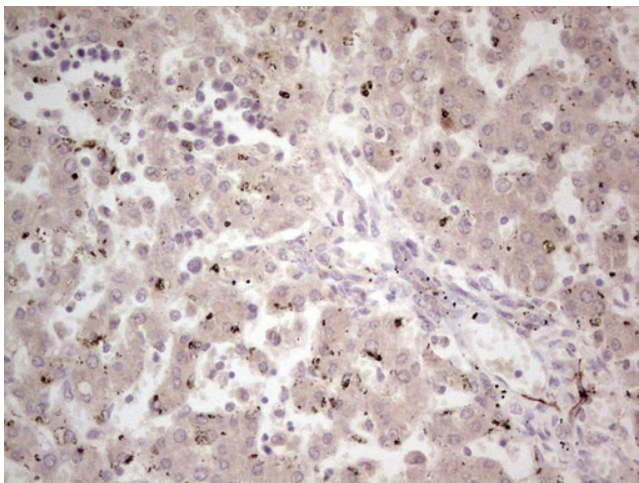
Immunohistochemical staining of paraffin-embedded Human adult heart tissue using anti-NEFM mouse monoclonal antibody. (Heat-induced epitope retrieval by 1mM EDTA in 10mM Tris, pH8.5, 120°C for 3min, [TA805823])



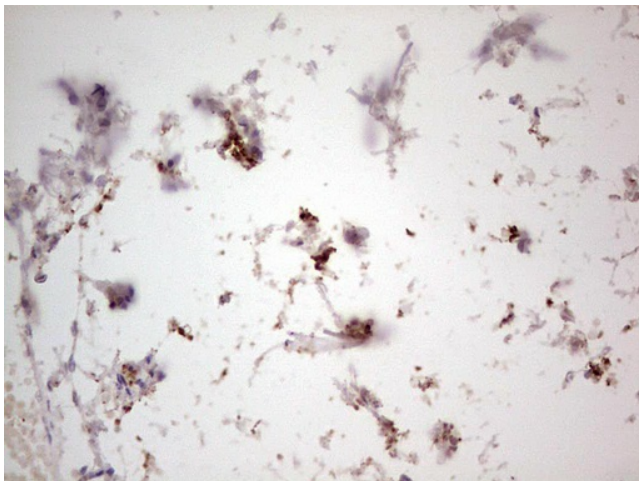
Immunohistochemical staining of paraffin-embedded Human adult brain tissue using anti-NEFM mouse monoclonal antibody. (Heat-induced epitope retrieval by 1mM EDTA in 10mM Tris, pH8.5, 120°C for 3min, [TA805823])



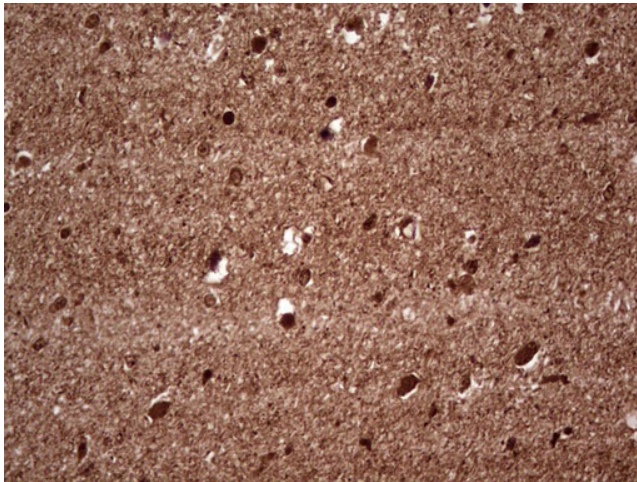
Immunohistochemical staining of paraffin-embedded Human melanoma tissue using anti-NEFM mouse monoclonal antibody. (Heat-induced epitope retrieval by 1mM EDTA in 10mM Tris, pH8.5, 120°C for 3min, [TA805823])



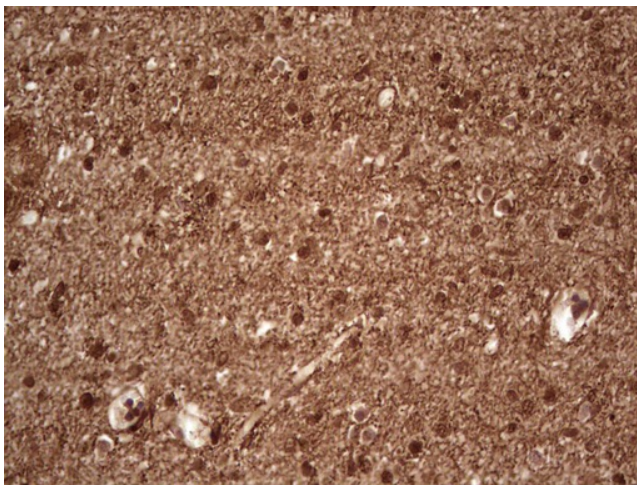
Immunohistochemical staining of paraffin-embedded Human embryonic liver tissue using anti-NEFM mouse monoclonal antibody. (Heat-induced epitope retrieval by 1mM EDTA in 10mM Tris, pH8.5, 120°C for 3min, [TA805823])



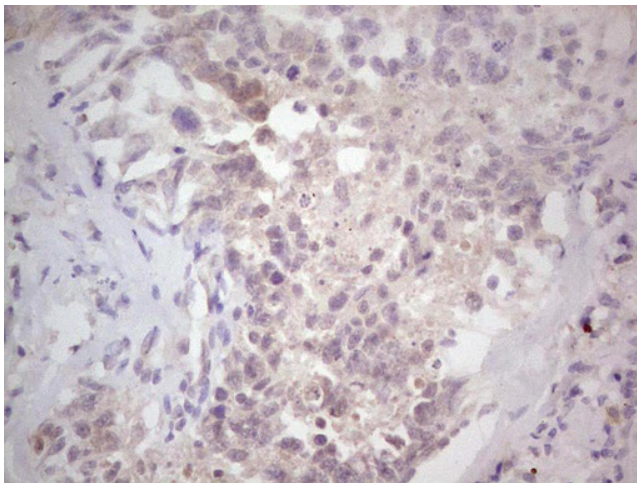
Immunohistochemical staining of paraffin-embedded Human muscle tissue using anti-NEFM mouse monoclonal antibody. (Heat-induced epitope retrieval by 1mM EDTA in 10mM Tris, pH8.5, 120°C for 3min, [TA805823])



Immunohistochemical staining of paraffin-embedded Human embryonic brain cortex tissue using anti-NEFM mouse monoclonal antibody. (Heat-induced epitope retrieval by 1mM EDTA in 10mM Tris, pH8.5, 120°C for 3min, [TA805823])



Immunohistochemical staining of paraffin-embedded Human embryonic cerebellum using anti-NEFM mouse monoclonal antibody. (Heat-induced epitope retrieval by 1mM EDTA in 10mM Tris, pH8.5, 120°C for 3min, [TA805823])



Immunohistochemical staining of paraffin-embedded Human testicular cancer tissue using anti-NEFM mouse monoclonal antibody. (Heat-induced epitope retrieval by 1mM EDTA in 10mM Tris, pH8.5, 120°C for 3min, [TA805823])