

Product datasheet for **TA805822BM**

Centrin 3 (CETN3) Mouse Monoclonal Antibody (HRP conjugated) [Clone ID: OTI4G5]

Product data:

Product Type:	Primary Antibodies
Clone Name:	OTI4G5
Applications:	WB
Recommended Dilution:	WB 1:2000
Reactivity:	Human, Mouse
Host:	Mouse
Isotype:	IgG1
Clonality:	Monoclonal
Immunogen:	Full length human recombinant protein of human CETN3 (NP_004356) produced in E.coli.
Formulation:	PBS (pH 7.3) containing 1% BSA, 50% glycerol.
Concentration:	0.5 mg/ml
Purification:	Purified from mouse ascites fluids or tissue culture supernatant by affinity chromatography (protein A/G)
Conjugation:	HRP
Storage:	Store at -20°C as received.
Stability:	Stable for 12 months from date of receipt.
Predicted Protein Size:	19.4 kDa
Gene Name:	centrin 3
Database Link:	NP_004356 Entrez Gene 1070 Human O15182



[View online »](#)

Background:

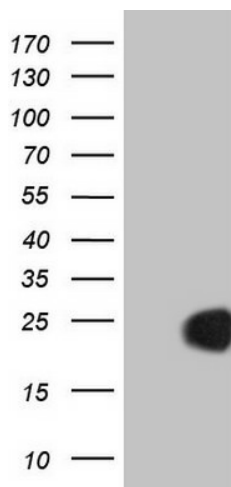
The protein encoded by this gene contains four EF-hand calcium binding domains, and is a member of the centrin protein family. Centrins are evolutionarily conserved proteins similar to the CDC31 protein of *S. cerevisiae*. Yeast CDC31 is located at the centrosome of interphase and mitotic cells, where it plays a fundamental role in centrosome duplication and separation. Multiple forms of the proteins similar to the yeast centrin have been identified in human and other mammalian cells, some of which have been shown to be associated with centrosome fractions. This protein appears to be one of the most abundant centrins associated with centrosome, which suggests a similar function to its yeast counterpart. [provided by RefSeq, Jul 2008]

Synonyms:

CDC31; CEN3

Protein Families:

Druggable Genome

Product images:

HEK293T cells were transfected with the pCMV6-ENTRY control (Left lane) or pCMV6-ENTRY CETN3 ([RC202804], Right lane) cDNA for 48 hrs and lysed. Equivalent amounts of cell lysates (5 ug per lane) were separated by SDS-PAGE and immunoblotted with anti-CETN3. Positive lysates [LY418039] (100ug) and [LC418039] (20ug) can be purchased separately from OriGene.