

Product datasheet for **TA805804M**

ROS1 Mouse Monoclonal Antibody [Clone ID: OT11A1]

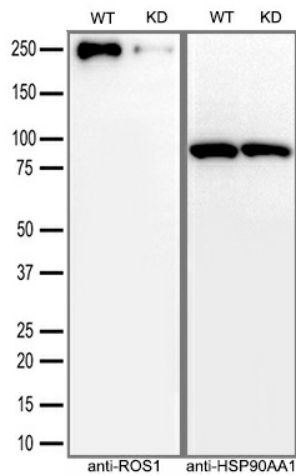
Product data:

Product Type:	Primary Antibodies
Clone Name:	OT11A1
Applications:	IF, IHC, WB
Recommended Dilution:	WB(overexpression) 1:1000, WB(endogenous) 1:200, IF/ICC 1:5000-10000, IHC 1:500
Reactivity:	Human
Host:	Mouse
Isotype:	IgG2a
Clonality:	Monoclonal
Immunogen:	Human recombinant protein fragment corresponding to amino acids 1882-2125 of human ROS1(NP_002935) produced in E.coli.
Formulation:	PBS (pH 7.3) containing 1% BSA, 50% glycerol and 0.02% sodium azide.
Concentration:	1 mg/ml
Purification:	Purified from mouse ascites fluids or tissue culture supernatant by affinity chromatography (protein A/G)
Conjugation:	Unconjugated
Storage:	Store at -20°C as received.
Stability:	Stable for 12 months from date of receipt.
Gene Name:	ROS proto-oncogene 1, receptor tyrosine kinase
Database Link:	NP_002935 Entrez Gene 6098 Human P08922
Synonyms:	c-ros-1; MCF3; ROS
Protein Families:	Druggable Genome, Protein Kinase, Transmembrane

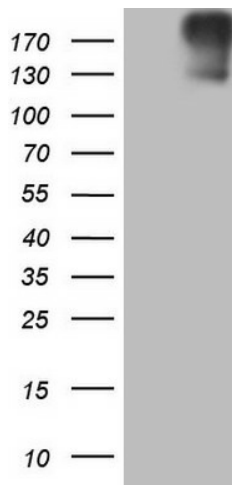


[View online »](#)

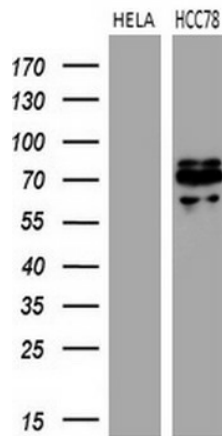
Product images:



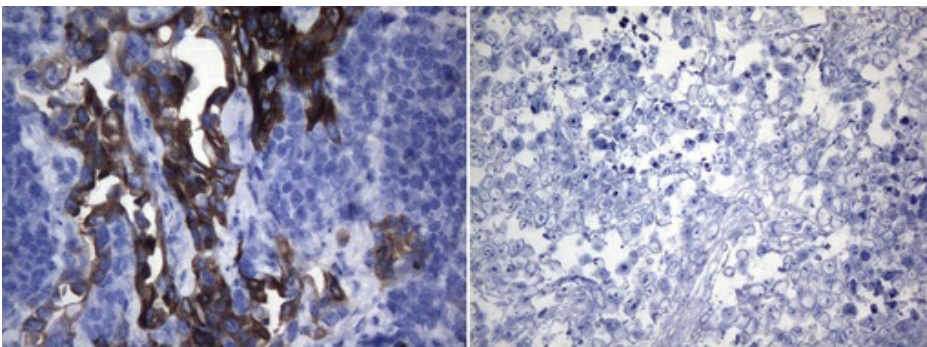
Equivalent amounts of cell lysates (30 ug per lane) of wild-type HeLa cells (WT) and ROS1-Knockdown HeLa cells (KD) were separated by SDS-PAGE and immunoblotted with anti-ROS1 monoclonal antibody [TA805804](1:500). Then the blotted membrane was stripped and reprobed with anti-HSP90AA1 antibody as a loading control.



HEK293T cells were transfected with the pCMV6-ENTRY control (Cat# [PS100001], Left lane) or pCMV6-ENTRY ROS1 (Cat# [RC220652], Right lane) cDNA for 48 hrs and lysed. Equivalent amounts of cell lysates (5 ug per lane) were separated by SDS-PAGE and immunoblotted with anti-ROS1 (Cat# [TA805804]).



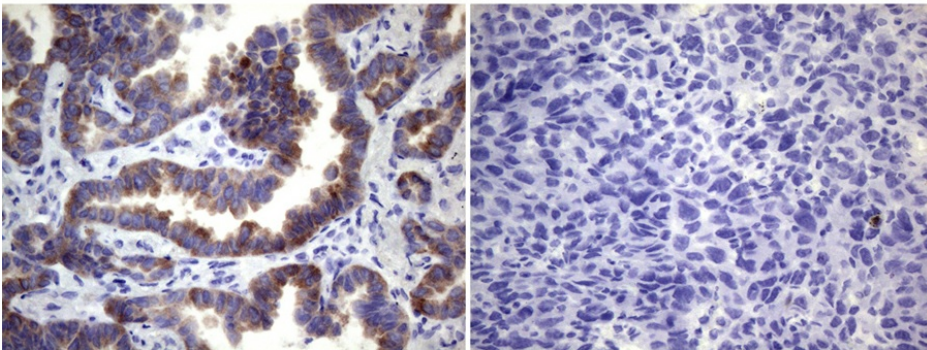
Western blot analysis of extracts (35ug) from 2 different cell lines by using anti-ROS1 monoclonal antibody (1:500).



Immunohistochemical staining of paraffin-embedded HCC78 (left) and HeLa (right) xenograft using [TA805804] (0.2ug/ml). Heat-induced epitope retrieval by EDTA solution buffer pH 8.0 at 120°C for 3 min.

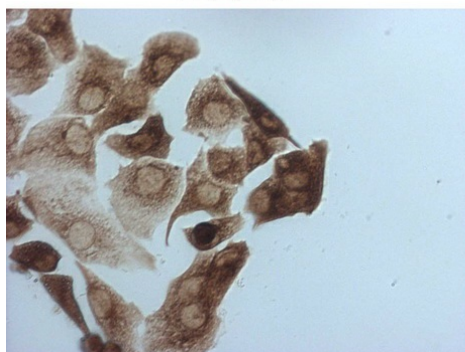
NSCLC Sample 1#

NSCLC Sample 2#



Immunohistochemical staining of paraffin-embedded non-small cell lung cancer tissues (case1 was ROS1-positive, Case2 was ROS1-negative) using [TA805804] (0.2ug/ml). Heat-induced epitope retrieval by EDTA solution buffer pH 8.0 at 120°C for 3 min.

HCC78



HELA



Immunocytochemistry staining of HCC78 cells using anti-ROS1 mouse monoclonal antibody ([TA805804]) (Left). The right is HELA cells as negative control.