

Product datasheet for **TA805796S**

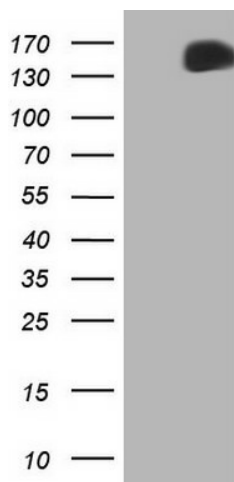
MET Mouse Monoclonal Antibody [Clone ID: OTI3G5]

Product data:

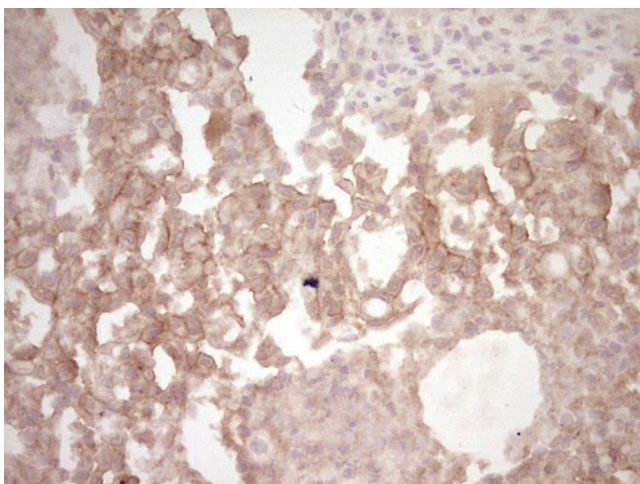
Product Type:	Primary Antibodies
Clone Name:	OTI3G5
Applications:	IHC, WB
Recommended Dilution:	WB 1:2000
Reactivity:	Human, Mouse, Rat
Host:	Mouse
Isotype:	IgG1
Clonality:	Monoclonal
Immunogen:	Human recombinant protein fragment corresponding to amino acids 570-885 of human MET(NP_000236) produced in E.coli.
Formulation:	PBS (pH 7.3) containing 1% BSA, 50% glycerol and 0.02% sodium azide.
Concentration:	1 mg/ml
Purification:	Purified from mouse ascites fluids or tissue culture supernatant by affinity chromatography (protein A/G)
Conjugation:	Unconjugated
Storage:	Store at -20°C as received.
Stability:	Stable for 12 months from date of receipt.
Gene Name:	MET proto-oncogene, receptor tyrosine kinase
Database Link:	NP_000236 Entrez Gene 17295 Mouse Entrez Gene 24553 Rat Entrez Gene 4233 Human P08581
Synonyms:	AUTS9; c-Met; DFNB97; HGFR; RCCP2
Protein Families:	Druggable Genome, Protein Kinase, Transmembrane
Protein Pathways:	Adherens junction, Axon guidance, Colorectal cancer, Cytokine-cytokine receptor interaction, Endocytosis, Epithelial cell signaling in Helicobacter pylori infection, Focal adhesion, Melanoma, Pathways in cancer, Renal cell carcinoma



[View online »](#)

Product images:

HEK293T cells were transfected with the pCMV6-ENTRY control (Left lane) or pCMV6-ENTRY MET ([RC217003], Right lane) cDNA for 48 hrs and lysed. Equivalent amounts of cell lysates (5 ug per lane) were separated by SDS-PAGE and immunoblotted with anti-MET. Positive lysates [LY400094] (100ug) and [LC400094] (20ug) can be purchased separately from OriGene.



Immunohistochemical staining of paraffin-embedded MET positive Human lung carcinoma tissue using anti-MET mouse monoclonal antibody. ([TA805796]) Dilution: 1:150