

## Product datasheet for **TA805795S**

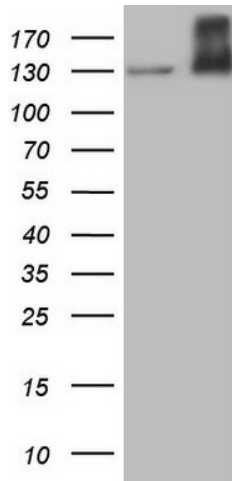
### **MET Mouse Monoclonal Antibody [Clone ID: OT11E6]**

#### **Product data:**

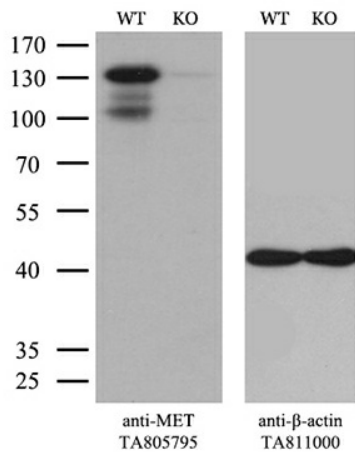
<b>Product Type:</b>	Primary Antibodies
<b>Clone Name:</b>	OT11E6
<b>Applications:</b>	IHC, WB
<b>Recommended Dilution:</b>	WB 1:2000, IHC 1:150
<b>Reactivity:</b>	Human, Mouse, Rat
<b>Host:</b>	Mouse
<b>Isotype:</b>	IgG2b
<b>Clonality:</b>	Monoclonal
<b>Immunogen:</b>	Human recombinant protein fragment corresponding to amino acids 570-885 of human MET(NP_000236) produced in E.coli.
<b>Formulation:</b>	PBS (pH 7.3) containing 1% BSA, 50% glycerol and 0.02% sodium azide.
<b>Concentration:</b>	1 mg/ml
<b>Purification:</b>	Purified from mouse ascites fluids or tissue culture supernatant by affinity chromatography (protein A/G)
<b>Conjugation:</b>	Unconjugated
<b>Storage:</b>	Store at -20°C as received.
<b>Stability:</b>	Stable for 12 months from date of receipt.
<b>Predicted Protein Size:</b>	153 kDa
<b>Gene Name:</b>	MET proto-oncogene, receptor tyrosine kinase
<b>Database Link:</b>	<a href="#">NP_000236</a> <a href="#">Entrez Gene 17295 Mouse</a> <a href="#">Entrez Gene 24553 Rat</a> <a href="#">Entrez Gene 4233 Human</a> <a href="#">P08581</a>
<b>Synonyms:</b>	AUTS9; c-Met; DFNB97; HGFR; RCCP2
<b>Protein Families:</b>	Druggable Genome, Protein Kinase, Transmembrane
<b>Protein Pathways:</b>	Adherens junction, Axon guidance, Colorectal cancer, Cytokine-cytokine receptor interaction, Endocytosis, Epithelial cell signaling in Helicobacter pylori infection, Focal adhesion, Melanoma, Pathways in cancer, Renal cell carcinoma



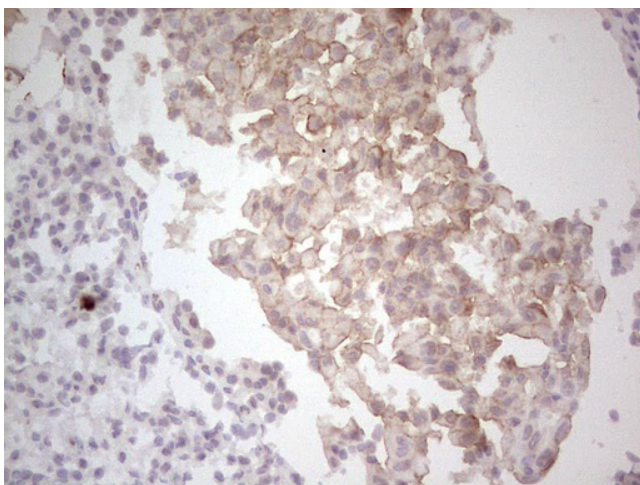
[View online »](#)

**Product images:**


HEK293T cells were transfected with the pCMV6-ENTRY control (Cat# [PS100001], Left lane) or pCMV6-ENTRY MET (Cat# [RC217003], Right lane) cDNA for 48 hrs and lysed. Equivalent amounts of cell lysates (5 ug per lane) were separated by SDS-PAGE and immunoblotted with anti-MET (Cat# [TA805795]). Positive lysates [LY400094] (100ug) and [LC400094] (20ug) can be purchased separately from OriGene.



Equivalent amounts of cell lysates (10 ug per lane) of wild-type HeLa cells (WT, Cat# LC810HELA) and MET-Knockout HeLa cells (KO, Cat# [LC810144]) were separated by SDS-PAGE and immunoblotted with anti-MET monoclonal antibody [TA805795]. Then the blotted membrane was stripped and reprobed with anti-beta-actin antibody ([TA811000]) as a loading control (1:500).



Immunohistochemical staining of paraffin-embedded MET positive Human lung carcinoma tissue using anti-MET mouse monoclonal antibody. ([TA805795]; heat-induced epitope retrieval by 1mM EDTA in 10mM Tris, pH8.5, 120°C for 3min)