

## Product datasheet for **TA805795M**

### **MET Mouse Monoclonal Antibody [Clone ID: OTI1E6]**

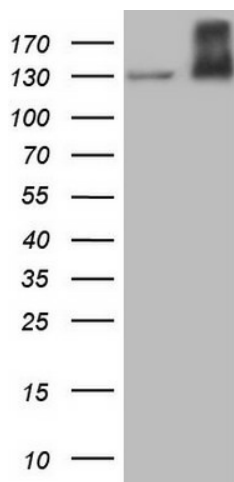
#### **Product data:**

Product Type:	Primary Antibodies
Clone Name:	OTI1E6
Applications:	IHC, WB
Recommended Dilution:	WB 1:2000, IHC 1:150
Reactivity:	Human, Mouse, Rat
Host:	Mouse
Isotype:	IgG2b
Clonality:	Monoclonal
Immunogen:	Human recombinant protein fragment corresponding to amino acids 570-885 of human MET(NP_000236) produced in E.coli.
Formulation:	PBS (pH 7.3) containing 1% BSA, 50% glycerol and 0.02% sodium azide.
Concentration:	1 mg/ml
Purification:	Purified from mouse ascites fluids or tissue culture supernatant by affinity chromatography (protein A/G)
Conjugation:	Unconjugated
Storage:	Store at -20°C as received.
Stability:	Stable for 12 months from date of receipt.
Predicted Protein Size:	153 kDa
Gene Name:	MET proto-oncogene, receptor tyrosine kinase
Database Link:	<a href="#">NP_000236</a> <a href="#">Entrez Gene 17295 Mouse</a> <a href="#">Entrez Gene 24553 Rat</a> <a href="#">Entrez Gene 4233 Human</a> <a href="#">P08581</a>
Synonyms:	AUTS9; c-Met; DFNB97; HGFR; RCCP2
Protein Families:	Druggable Genome, Protein Kinase, Transmembrane
Protein Pathways:	Adherens junction, Axon guidance, Colorectal cancer, Cytokine-cytokine receptor interaction, Endocytosis, Epithelial cell signaling in Helicobacter pylori infection, Focal adhesion, Melanoma, Pathways in cancer, Renal cell carcinoma

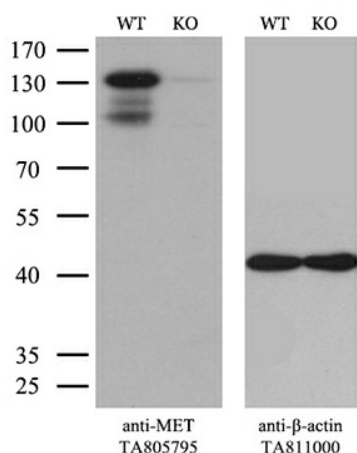


[View online »](#)

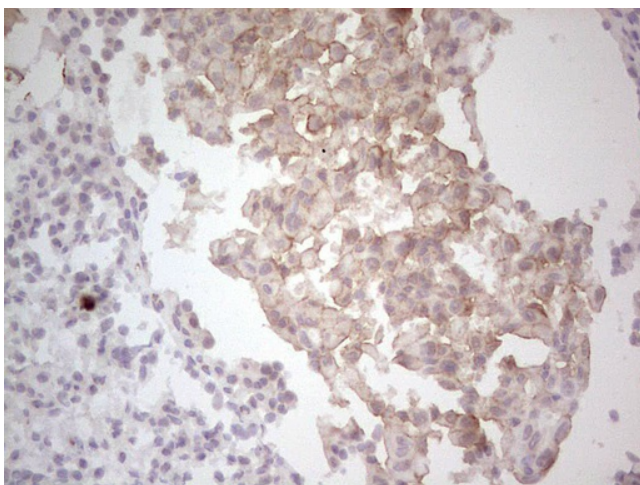
## Product images:



HEK293T cells were transfected with the pCMV6-ENTRY control (Cat# [PS100001], Left lane) or pCMV6-ENTRY MET (Cat# [RC217003], Right lane) cDNA for 48 hrs and lysed. Equivalent amounts of cell lysates (5 ug per lane) were separated by SDS-PAGE and immunoblotted with anti-MET (Cat# [TA805795]). Positive lysates [LY400094] (100ug) and [LC400094] (20ug) can be purchased separately from OriGene.



Equivalent amounts of cell lysates (10 ug per lane) of wild-type HeLa cells (WT, Cat# LC810HELA) and MET-Knockout HeLa cells (KO, Cat# [LC810144]) were separated by SDS-PAGE and immunoblotted with anti-MET monoclonal antibody [TA805795]. Then the blotted membrane was stripped and reprobed with anti-β-actin antibody ([TA811000]) as a loading control (1:500).



Immunohistochemical staining of paraffin-embedded MET positive Human lung carcinoma tissue using anti-MET mouse monoclonal antibody. ([TA805795]; heat-induced epitope retrieval by 1mM EDTA in 10mM Tris, pH8.5, 120°C for 3min). Heat-induced epitope retrieval by EDTA solution buffer pH 8.0 at 120°C for 3 min.