

Product datasheet for **TA805792AM**

IGF1 Mouse Monoclonal Antibody (Biotin conjugated) [Clone ID: OTI3A6]

Product data:

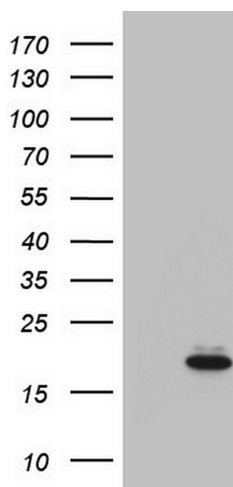
Product Type:	Primary Antibodies
Clone Name:	OTI3A6
Applications:	IHC, WB
Recommended Dilution:	WB 1:2000, IHC 1:150
Reactivity:	Human, Mouse, Rat
Host:	Mouse
Isotype:	IgG1
Clonality:	Monoclonal
Immunogen:	Human recombinant protein fragment corresponding to amino acids 1-151 of human IGF1(NP_001104753) produced in E.coli.
Formulation:	PBS (pH 7.3) containing 1% BSA, 50% glycerol and 0.02% sodium azide.
Concentration:	0.5 mg/ml
Purification:	Purified from mouse ascites fluids or tissue culture supernatant by affinity chromatography (protein A/G)
Conjugation:	Biotin
Storage:	Store at -20°C as received.
Stability:	Stable for 12 months from date of receipt.
Predicted Protein Size:	12.4 kDa
Gene Name:	insulin like growth factor 1
Database Link:	NP_001104753 Entrez Gene 16000 Mouse Entrez Gene 24482 Rat Entrez Gene 3479 Human P05019
Background:	The protein encoded by this gene is similar to insulin in function and structure and is a member of a family of proteins involved in mediating growth and development. The encoded protein is processed from a precursor, bound by a specific receptor, and secreted. Defects in this gene are a cause of insulin-like growth factor I deficiency. Several transcript variants encoding different isoforms have been found for this gene. [provided by RefSeq, Mar



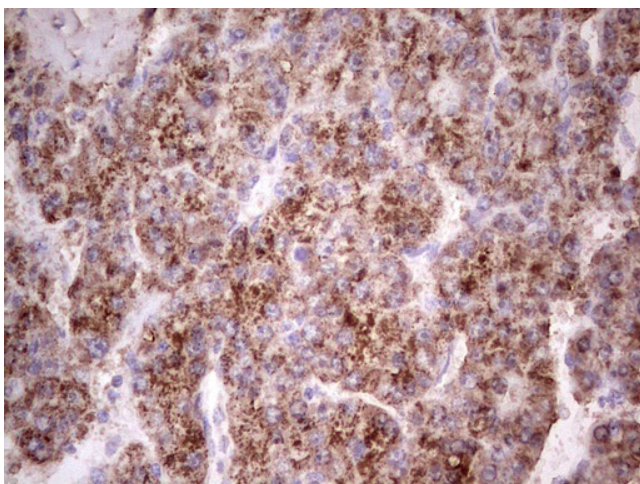
[View online »](#)

Synonyms:	IGF-I; IGF1; MGF
Protein Families:	Druggable Genome, ES Cell Differentiation/IPS, Secreted Protein
Protein Pathways:	Dilated cardiomyopathy, Focal adhesion, Glioma, Hypertrophic cardiomyopathy (HCM), Long-term depression, Melanoma, mTOR signaling pathway, Oocyte meiosis, p53 signaling pathway, Pathways in cancer, Progesterone-mediated oocyte maturation, Prostate cancer

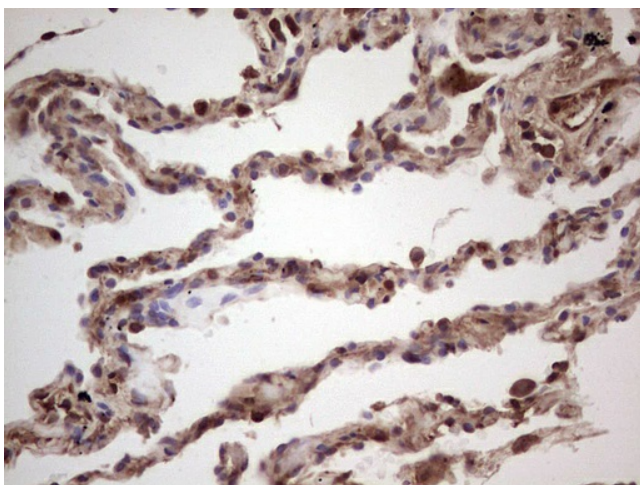
Product images:



HEK293T cells were transfected with the pCMV6-ENTRY control (Left lane) or pCMV6-ENTRY IGF1 ([RC225144], Right lane) cDNA for 48 hrs and lysed. Equivalent amounts of cell lysates (5 ug per lane) were separated by SDS-PAGE and immunoblotted with anti-IGF1. Positive lysates [LY426358] (100ug) and [LC426358] (20ug) can be purchased separately from OriGene.



Immunohistochemical staining of paraffin-embedded Carcinoma of Human liver tissue using anti-IGF1 mouse monoclonal antibody. (Heat-induced epitope retrieval by 1mM EDTA in 10mM Tris, pH8.5, 120°C for 3min, [TA805792])



Immunohistochemical staining of paraffin-embedded Human lung tissue within the normal limits using anti-IGF1 mouse monoclonal antibody. (Heat-induced epitope retrieval by 1mM EDTA in 10mM Tris, pH8.5, 120°C for 3min, [TA805792])