

## Product datasheet for **TA805786S**

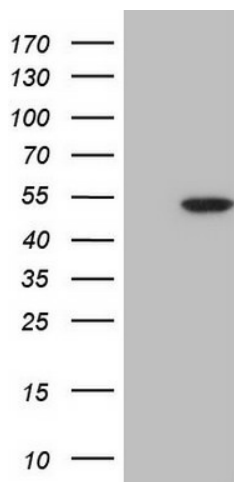
### CDKL1 Mouse Monoclonal Antibody [Clone ID: OTI3E8]

#### Product data:

Product Type:	Primary Antibodies
Clone Name:	OTI3E8
Applications:	WB
Recommended Dilution:	WB 1:2000
Reactivity:	Human, Mouse, Rat
Host:	Mouse
Isotype:	IgG1
Clonality:	Monoclonal
Immunogen:	Human recombinant protein fragment corresponding to amino acids 152-357 of human CDKL1(NP_004187) produced in E.coli.
Formulation:	PBS (pH 7.3) containing 1% BSA, 50% glycerol and 0.02% sodium azide.
Concentration:	1 mg/ml
Purification:	Purified from mouse ascites fluids or tissue culture supernatant by affinity chromatography (protein A/G)
Conjugation:	Unconjugated
Storage:	Store at -20°C as received.
Stability:	Stable for 12 months from date of receipt.
Predicted Protein Size:	41.7 kDa
Gene Name:	cyclin dependent kinase like 1
Database Link:	<a href="#">NP_004187</a> <a href="#">Entrez Gene 71091 Mouse</a> <a href="#">Entrez Gene 314198 Rat</a> <a href="#">Entrez Gene 8814 Human</a> <a href="#">Q00532</a>
Synonyms:	KKIALRE; P42
Protein Families:	Druggable Genome, Protein Kinase



[View online »](#)

**Product images:**

HEK293T cells were transfected with the pCMV6-ENTRY control (Left lane) or pCMV6-ENTRY CDKL1 ([RC211223], Right lane) cDNA for 48 hrs and lysed. Equivalent amounts of cell lysates (5 ug per lane) were separated by SDS-PAGE and immunoblotted with anti-CDKL1. Positive lysates [LY418154] (100ug) and [LC418154] (20ug) can be purchased separately from OriGene.