

Product datasheet for **TA805779S**

PROCR Mouse Monoclonal Antibody [Clone ID: OTI12C4]

Product data:

Product Type:	Primary Antibodies
Clone Name:	OTI12C4
Applications:	WB
Recommended Dilution:	WB 1:2000
Reactivity:	Human
Host:	Mouse
Isotype:	IgG2b
Clonality:	Monoclonal
Immunogen:	Human recombinant protein fragment corresponding to amino acids 1-210 of human PROCR (NP_006395) produced in HEK293T cell.
Formulation:	PBS (pH 7.3) containing 1% BSA, 50% glycerol and 0.02% sodium azide.
Concentration:	1 mg/ml
Purification:	Purified from mouse ascites fluids or tissue culture supernatant by affinity chromatography (protein A/G)
Conjugation:	Unconjugated
Storage:	Store at -20°C as received.
Stability:	Stable for 12 months from date of receipt.
Predicted Protein Size:	24.7 kDa
Gene Name:	protein C receptor
Database Link:	NP_006395 Entrez Gene 10544 Human Q9UNN8
Background:	The protein encoded by this gene is a receptor for activated protein C, a serine protease activated by and involved in the blood coagulation pathway. The encoded protein is an N-glycosylated type I membrane protein that enhances the activation of protein C. Mutations in this gene have been associated with venous thromboembolism and myocardial infarction, as well as with late fetal loss during pregnancy. The encoded protein may also play a role in malarial infection and has been associated with cancer. [provided by RefSeq, Jul 2013]

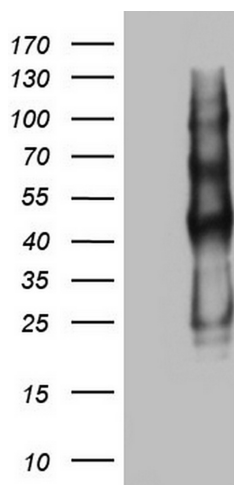


[View online »](#)

Synonyms: CCCA; CCD41; EPCR

Protein Families: Druggable Genome, ES Cell Differentiation/IPS, Transmembrane

Product images:



HEK293T cells were transfected with the pCMV6-ENTRY control (Left lane) or pCMV6-ENTRY PROCR ([RC204858], Right lane) cDNA for 48 hrs and lysed. Equivalent amounts of cell lysates (5 ug per lane) were separated by SDS-PAGE and immunoblotted with anti-PROCR. Positive lysates [LY401925] (100ug) and [LC401925] (20ug) can be purchased separately from OriGene.