

Product datasheet for **TA805734**

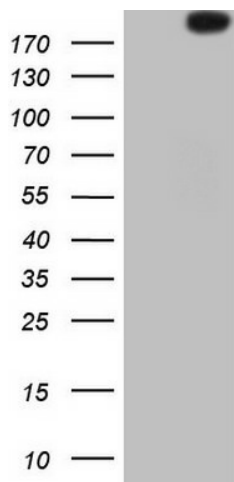
ROS1 Mouse Monoclonal Antibody [Clone ID: OTI5D2]

Product data:

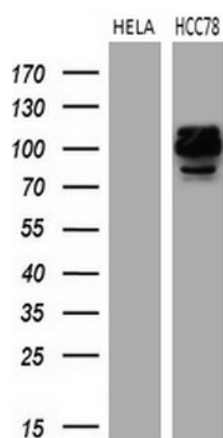
Product Type:	Primary Antibodies
Clone Name:	OTI5D2
Applications:	IHC, WB
Recommended Dilution:	WB 1:2000, IHC 1:5000
Reactivity:	Human
Host:	Mouse
Isotype:	IgG1
Clonality:	Monoclonal
Immunogen:	Human recombinant protein fragment corresponding to amino acids 2126-2347 of human ROS1(NP_002935) produced in E.coli.
Formulation:	PBS (pH 7.3) containing 1% BSA, 50% glycerol and 0.02% sodium azide.
Concentration:	1 mg/ml
Purification:	Purified from mouse ascites fluids or tissue culture supernatant by affinity chromatography (protein A/G)
Conjugation:	Unconjugated
Storage:	Store at -20°C as received.
Stability:	Stable for 12 months from date of receipt.
Gene Name:	ROS proto-oncogene 1, receptor tyrosine kinase
Database Link:	NP_002935 Entrez Gene 6098 Human P08922
Synonyms:	c-ros-1; MCF3; ROS
Protein Families:	Druggable Genome, Protein Kinase, Transmembrane



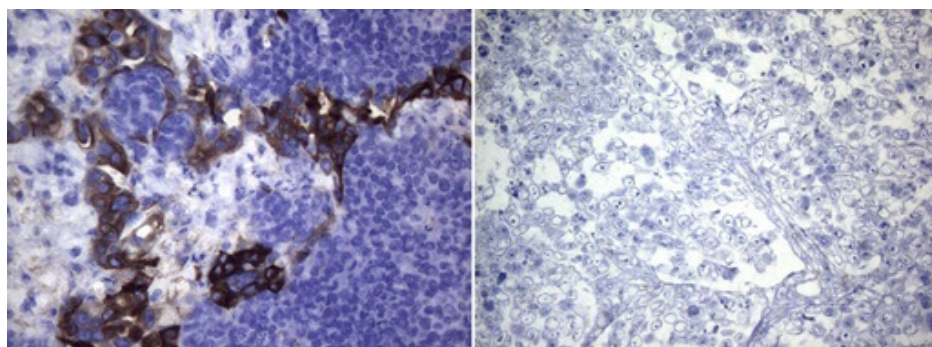
[View online »](#)

Product images:


HEK293T cells were transfected with the pCMV6-ENTRY control (Left lane) or pCMV6-ENTRY ROS1 ([RC220652], Right lane) cDNA for 48 hrs and lysed. Equivalent amounts of cell lysates (5 ug per lane) were separated by SDS-PAGE and immunoblotted with anti-ROS1.



Western blot analysis of extracts (35ug) from 2 different cell lines by using anti-ROS1 monoclonal antibody (1:500).



Immunohistochemical staining of paraffin-embedded HCC78 (left) and HeLa (right) xenograft using TA805734 (0.2ug/ml). (Heat-induced epitope retrieval by 1mM EDTA in 10mM Tris buffer (pH8.0) at 120°C for 3min)