

## Product datasheet for **TA805707S**

### RET Mouse Monoclonal Antibody [Clone ID: OTI5C7]

#### Product data:

Product Type:	Primary Antibodies
Clone Name:	OTI5C7
Applications:	IHC, WB
Recommended Dilution:	WB 1:2000, IHC 1:150
Reactivity:	Human, Rat
Host:	Mouse
Isotype:	IgG2b
Clonality:	Monoclonal
Immunogen:	Human recombinant protein fragment corresponding to amino acids 713-1017 of human RET(NP_066124) produced in E.coli.
Formulation:	PBS (pH 7.3) containing 1% BSA, 50% glycerol and 0.02% sodium azide.
Concentration:	1 mg/ml
Purification:	Purified from mouse ascites fluids or tissue culture supernatant by affinity chromatography (protein A/G)
Conjugation:	Unconjugated
Storage:	Store at -20°C as received.
Stability:	Stable for 12 months from date of receipt.
Predicted Protein Size:	124.1 kDa
Gene Name:	ret proto-oncogene
Database Link:	<a href="#">NP_066124</a> <a href="#">Entrez Gene 24716 Rat</a> <a href="#">Entrez Gene 5979 Human</a> <a href="#">P07949</a>



[View online »](#)

**Background:**

This gene, a member of the cadherin superfamily, encodes one of the receptor tyrosine kinases, which are cell-surface molecules that transduce signals for cell growth and differentiation. This gene plays a crucial role in neural crest development, and it can undergo oncogenic activation in vivo and in vitro by cytogenetic rearrangement. Mutations in this gene are associated with the disorders multiple endocrine neoplasia, type IIA, multiple endocrine neoplasia, type IIB, Hirschsprung disease, and medullary thyroid carcinoma. Two transcript variants encoding different isoforms have been found for this gene. Additional transcript variants have been described but their biological validity has not been confirmed. [provided by RefSeq, Jul 2008]

**Synonyms:**

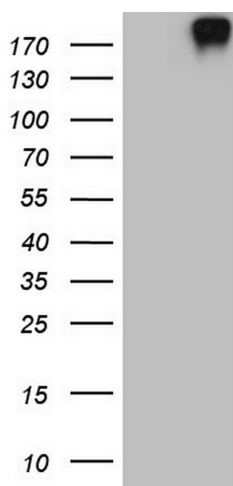
CDHF12; CDHR16; HSCR1; MEN2A; MEN2B; MTC1; PTC; RET-ELE1; RET51

**Protein Families:**

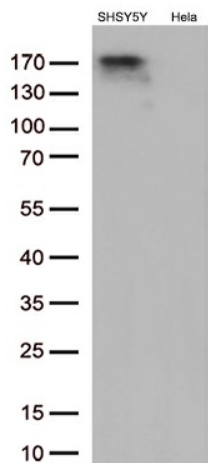
Druggable Genome, Protein Kinase, Transmembrane

**Protein Pathways:**

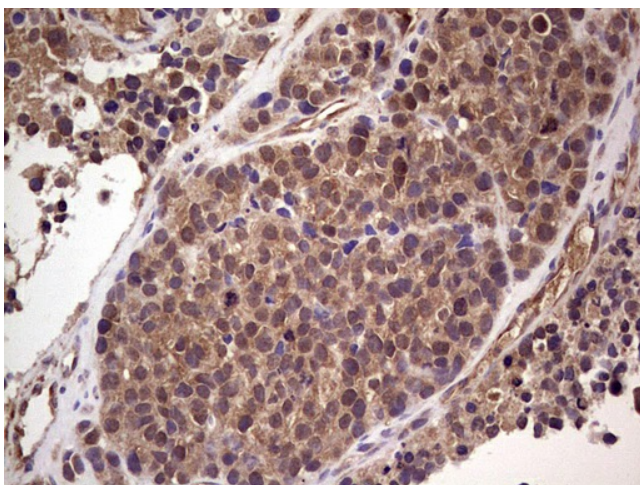
Endocytosis, Pathways in cancer, Thyroid cancer

**Product images:**

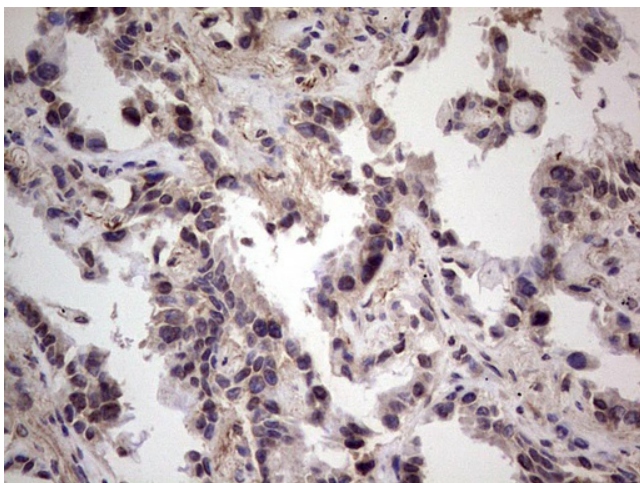
HEK293T cells were transfected with the pCMV6-ENTRY control (Left lane) or pCMV6-ENTRY RET ([RC214268], Right lane) cDNA for 48 hrs and lysed. Equivalent amounts of cell lysates (5 ug per lane) were separated by SDS-PAGE and immunoblotted with anti-RET. Positive lysates [LY412167] (100ug) and [LC412167] (20ug) can be purchased separately from OriGene.



Western blot analysis of extracts (35ug) from 2 different cell lines by using anti-RET monoclonal antibody (1:500).



Immunohistochemical staining of paraffin-embedded Carcinoma of RET positive Human lung tissue using anti-RET mouse monoclonal antibody. (Heat-induced epitope retrieval by 1mM EDTA in 10mM Tris, pH8.5, 120°C for 3min, [TA805707])



Immunohistochemical staining of paraffin-embedded Carcinoma of RET positive Human lung tissue using anti-RET mouse monoclonal antibody. (Heat-induced epitope retrieval by 1mM EDTA in 10mM Tris, pH8.5, 120°C for 3min, [TA805707])