

## Product datasheet for **TA805706S**

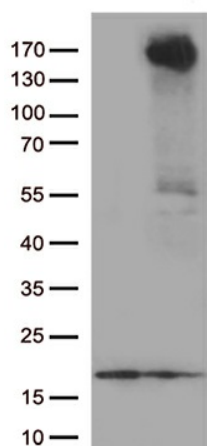
### RET Mouse Monoclonal Antibody [Clone ID: OTI2G6]

#### Product data:

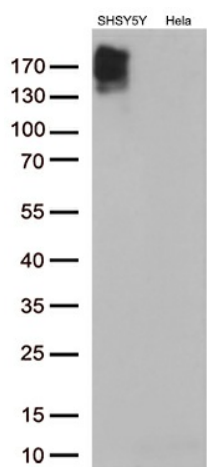
Product Type:	Primary Antibodies
Clone Name:	OTI2G6
Applications:	WB
Recommended Dilution:	WB 1:500
Reactivity:	Human, Rat
Host:	Mouse
Isotype:	IgG1
Clonality:	Monoclonal
Immunogen:	Human recombinant protein fragment corresponding to amino acids 713-1017 of human RET(NP_066124) produced in E.coli.
Formulation:	PBS (pH 7.3) containing 1% BSA, 50% glycerol and 0.02% sodium azide.
Concentration:	1 mg/ml
Purification:	Purified from mouse ascites fluids or tissue culture supernatant by affinity chromatography (protein A/G)
Conjugation:	Unconjugated
Storage:	Store at -20°C as received.
Stability:	Stable for 12 months from date of receipt.
Predicted Protein Size:	124.1 kDa
Gene Name:	ret proto-oncogene
Database Link:	<a href="#">NP_066124</a> <a href="#">Entrez Gene 24716 Rat</a> <a href="#">Entrez Gene 5979 Human</a> <a href="#">P07949</a>
Synonyms:	CDHF12; CDHR16; HSCR1; MEN2A; MEN2B; MTC1; PTC; RET-ELE1; RET51
Protein Families:	Druggable Genome, Protein Kinase, Transmembrane
Protein Pathways:	Endocytosis, Pathways in cancer, Thyroid cancer



[View online »](#)

**Product images:**

HEK293T cells were transfected with the pCMV6-ENTRY control (Left lane) or pCMV6-ENTRY RET ([RC214268], Right lane) cDNA for 48 hrs and lysed. Equivalent amounts of cell lysates (5 ug per lane) were separated by SDS-PAGE and immunoblotted with anti-RET (1:500).



Western blot analysis of extracts (35ug) from 2 different cell lines by using anti-RET monoclonal antibody (1:500).