

## Product datasheet for **TA805706**

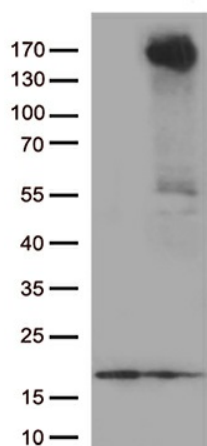
### RET Mouse Monoclonal Antibody [Clone ID: OTI2G6]

#### Product data:

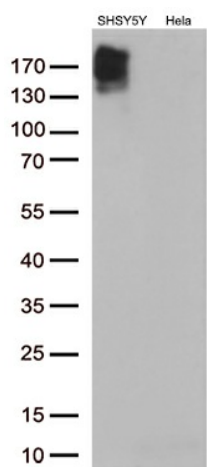
|                         |   |
|-------------------------|---|
| Product Type:           | Primary Antibodies  |
| Clone Name:             | OTI2G6  |
| Applications:           | WB  |
| Recommended Dilution:   | WB 1:500  |
| Reactivity:             | Human, Rat  |
| Host:                   | Mouse   |
| Isotype:                | IgG1  |
| Clonality:              | Monoclonal  |
| Immunogen:              | Human recombinant protein fragment corresponding to amino acids 713-1017 of human RET(NP_066124) produced in E.coli.                |
| Formulation:            | PBS (pH 7.3) containing 1% BSA, 50% glycerol and 0.02% sodium azide.  |
| Concentration:          | 1 mg/ml   |
| Purification:           | Purified from mouse ascites fluids or tissue culture supernatant by affinity chromatography (protein A/G)                           |
| Conjugation:            | Unconjugated  |
| Storage:                | Store at -20°C as received.   |
| Stability:              | Stable for 12 months from date of receipt.  |
| Predicted Protein Size: | 124.1 kDa   |
| Gene Name:              | ret proto-oncogene  |
| Database Link:          | <a href="#">NP_066124</a><br><a href="#">Entrez Gene 24716 Rat</a> <a href="#">Entrez Gene 5979 Human</a><br><a href="#">P07949</a> |
| Synonyms:               | CDHF12; CDHR16; HSCR1; MEN2A; MEN2B; MTC1; PTC; RET-ELE1; RET51   |
| Protein Families:       | Druggable Genome, Protein Kinase, Transmembrane   |
| Protein Pathways:       | Endocytosis, Pathways in cancer, Thyroid cancer   |



[View online »](#)

**Product images:**

HEK293T cells were transfected with the pCMV6-ENTRY control (Left lane) or pCMV6-ENTRY RET ([RC214268], Right lane) cDNA for 48 hrs and lysed. Equivalent amounts of cell lysates (5 ug per lane) were separated by SDS-PAGE and immunoblotted with anti-RET (1:500).



Western blot analysis of extracts (35ug) from 2 different cell lines by using anti-RET monoclonal antibody (1:500).