

Product datasheet for **TA805671S**

Rb (RB1) Mouse Monoclonal Antibody [Clone ID: OTI10H9]

Product data:

Product Type:	Primary Antibodies
Clone Name:	OTI10H9
Applications:	IHC, WB
Recommended Dilution:	WB 1:500, IHC 1:150
Reactivity:	Human, Mouse, Rat
Host:	Mouse
Isotype:	IgG1
Clonality:	Monoclonal
Immunogen:	Human recombinant protein fragment corresponding to amino acids 309-590 of human RB1(NP_000312) produced in E.coli.
Formulation:	PBS (pH 7.3) containing 1% BSA, 50% glycerol and 0.02% sodium azide.
Concentration:	1 mg/ml
Purification:	Purified from mouse ascites fluids or tissue culture supernatant by affinity chromatography (protein A/G)
Conjugation:	Unconjugated
Storage:	Store at -20°C as received.
Stability:	Stable for 12 months from date of receipt.
Gene Name:	RB transcriptional corepressor 1
Database Link:	NP_000312 Entrez Gene 19645 Mouse Entrez Gene 24708 Rat Entrez Gene 5925 Human P06400
Background:	The protein encoded by this gene is a negative regulator of the cell cycle and was the first tumor suppressor gene found. The encoded protein also stabilizes constitutive heterochromatin to maintain the overall chromatin structure. The active, hypophosphorylated form of the protein binds transcription factor E2F1. Defects in this gene are a cause of childhood cancer retinoblastoma (RB), bladder cancer, and osteogenic sarcoma. [provided by RefSeq, Jul 2008]
Synonyms:	OSRC; p105-Rb; pp110; PPP1R130; pRb; RB

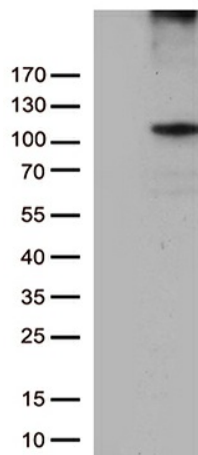


[View online »](#)

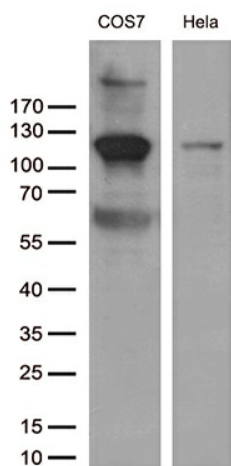
Protein Families: Druggable Genome, Transcription Factors

Protein Pathways: Bladder cancer, Cell cycle, Chronic myeloid leukemia, Glioma, Melanoma, Non-small cell lung cancer, Pancreatic cancer, Pathways in cancer, Prostate cancer, Small cell lung cancer

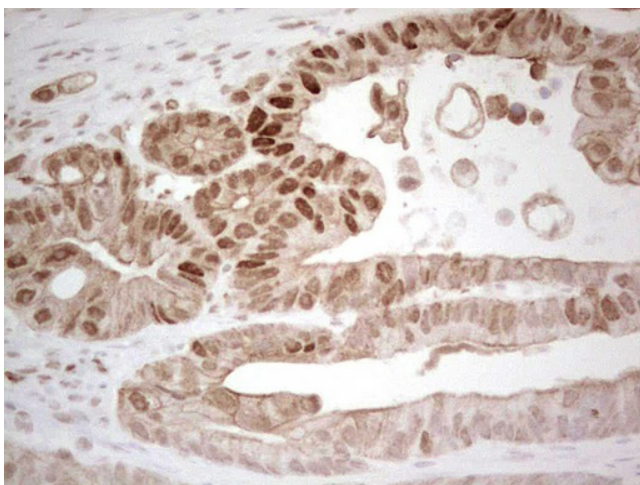
Product images:



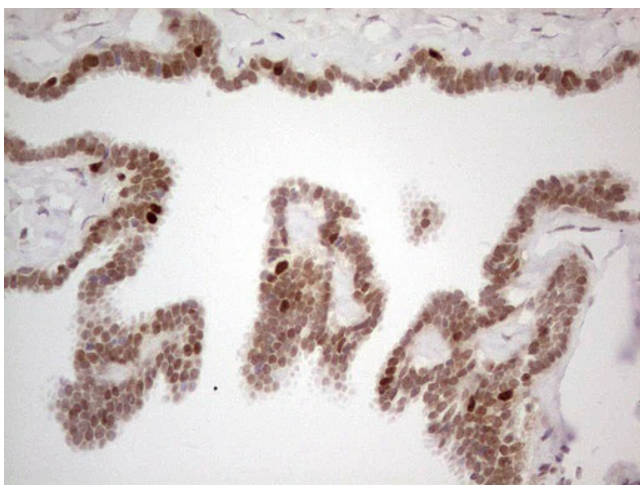
HEK293T cells were transfected with the pCMV6-ENTRY control (Left lane) or pCMV6-ENTRY RB1 ([RC206933], Right lane) cDNA for 48 hrs and lysed. Equivalent amounts of cell lysates (5 ug per lane) were separated by SDS-PAGE and immunoblotted with anti-RB1 mouse monoclonal antibody.1:500`



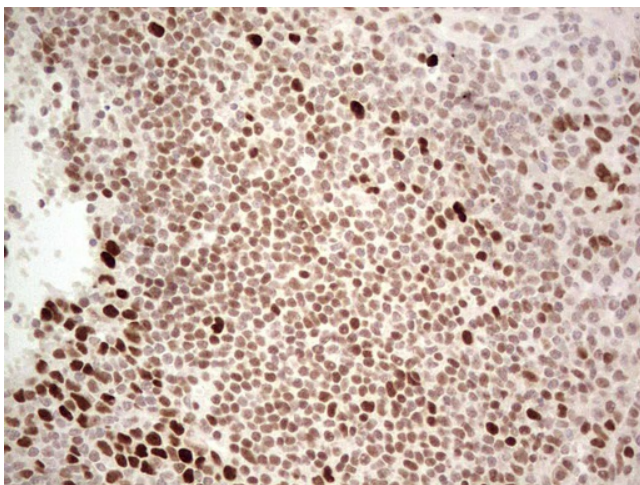
Western blot analysis of extracts (35ug) from 2 different cell lines by using anti-RB1 monoclonal antibody. 1:400



Immunohistochemical staining of paraffin-embedded Adenocarcinoma of Human colon tissue using anti-RB1 mouse monoclonal antibody. (Heat-induced epitope retrieval by 1mM EDTA in 10mM Tris, pH8.5, 120°C for 3min, [TA805671])



Immunohistochemical staining of paraffin-embedded Human Ovary tissue within the normal limits using anti-RB1 mouse monoclonal antibody. (Heat-induced epitope retrieval by 1mM EDTA in 10mM Tris, pH8.5, 120°C for 3min, [TA805671])



Immunohistochemical staining of paraffin-embedded Human tonsil within the normal limits using anti-RB1 mouse monoclonal antibody. (Heat-induced epitope retrieval by 1mM EDTA in 10mM Tris, pH8.5, 120°C for 3min, [TA805671])