

## Product datasheet for **TA805639AM**

### **MEOX 2 (MEOX2) Mouse Monoclonal Antibody (Biotin conjugated) [Clone ID: OTI4F6]**

#### **Product data:**

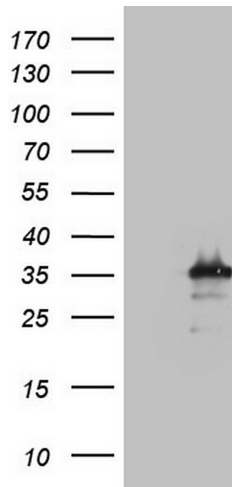
Product Type:	Primary Antibodies
Clone Name:	OTI4F6
Applications:	WB
Recommended Dilution:	WB 1:2000
Reactivity:	Human, Mouse, Rat
Host:	Mouse
Isotype:	IgG1
Clonality:	Monoclonal
Immunogen:	Full length human recombinant protein of human MEOX2 (NP_005915) produced in E.coli.
Formulation:	PBS (pH 7.3) containing 1% BSA, 50% glycerol and 0.02% sodium azide.
Concentration:	0.5 mg/ml
Purification:	Purified from mouse ascites fluids or tissue culture supernatant by affinity chromatography (protein A/G)
Conjugation:	Biotin
Storage:	Store at -20°C as received.
Stability:	Stable for 12 months from date of receipt.
Predicted Protein Size:	33.4 kDa
Gene Name:	mesenchyme homeobox 2
Database Link:	<a href="#">NP_005915</a> <a href="#">Entrez Gene 17286 Mouse</a> <a href="#">Entrez Gene 29279 Rat</a> <a href="#">Entrez Gene 4223 Human</a> <a href="#">P50222</a>
Background:	This gene encodes a member of a subfamily of non-clustered, diverged, antennapedia-like homeobox-containing genes. The encoded protein may play a role in the regulation of vertebrate limb myogenesis. Mutations in the related mouse protein may be associated with craniofacial and/or skeletal abnormalities, in addition to neurovascular dysfunction observed in Alzheimer's disease. [provided by RefSeq, Jul 2008]
Synonyms:	GAX; MOX2



[View online »](#)

Protein Families: Transcription Factors

**Product images:**



HEK293T cells were transfected with the pCMV6-ENTRY control (Cat# [PS100001], Left lane) or pCMV6-ENTRY MEOX2 (Cat# [RC201948], Right lane) cDNA for 48 hrs and lysed. Equivalent amounts of cell lysates (5 ug per lane) were separated by SDS-PAGE and immunoblotted with anti-MEOX2(Cat# [TA805639]). Positive lysates [LY401795] (100ug) and [LC401795] (20ug) can be purchased separately from OriGene.