

Product datasheet for **TA805638**

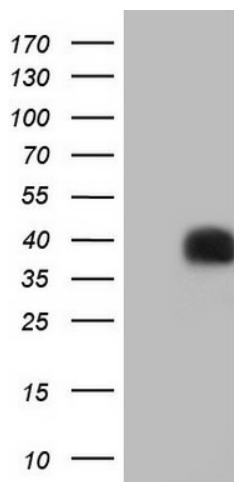
PAGE1 Mouse Monoclonal Antibody [Clone ID: OTI4A6]

Product data:

Product Type:	Primary Antibodies
Clone Name:	OTI4A6
Applications:	WB
Recommended Dilution:	WB 1:2000
Reactivity:	Human
Host:	Mouse
Isotype:	IgG1
Clonality:	Monoclonal
Immunogen:	Full length human recombinant protein of human PAGE1 (NP_003776) produced in E.coli.
Formulation:	PBS (pH 7.3) containing 1% BSA, 50% glycerol and 0.02% sodium azide.
Concentration:	1 mg/ml
Purification:	Purified from mouse ascites fluids or tissue culture supernatant by affinity chromatography (protein A/G)
Conjugation:	Unconjugated
Storage:	Store at -20°C as received.
Stability:	Stable for 12 months from date of receipt.
Predicted Protein Size:	16 kDa
Gene Name:	PAGE family member 1
Database Link:	NP_003776 Entrez Gene 8712 Human O75459
Background:	This gene belongs to a family of genes that are expressed in a variety of tumors but not in normal tissues, except for the testis. Unlike the other gene family members, this gene does not encode an antigenic peptide. Nothing is presently known about the function of this protein. [provided by RefSeq, Jul 2008]
Synonyms:	AL5; CT16.3; GAGE-9; GAGEB1; PAGE-1

[View online »](#)

Product images:



HEK293T cells were transfected with the pCMV6-ENTRY control (Left lane) or pCMV6-ENTRY PAGE1 ([RC202446], Right lane) cDNA for 48 hrs and lysed. Equivalent amounts of cell lysates (5 ug per lane) were separated by SDS-PAGE and immunoblotted with anti-PAGE1. Positive lysates [LY418433] (100ug) and [LC418433] (20ug) can be purchased separately from OriGene.