

Product datasheet for TA805621M

MCM2 Mouse Monoclonal Antibody [Clone ID: OTI1C7]

Product data:

Product Type:	Primary Antibodies
Clone Name:	OTI1C7
Applications:	IHC, WB
Recommended Dilution:	WB 1:2000, IHC 1:150
Reactivity:	Human, Mouse, Rat
Host:	Mouse
Isotype:	IgG1
Clonality:	Monoclonal
Immunogen:	Full length human recombinant protein of human MCM2 (NP_004517) produced in HEK293T cell.
Formulation:	PBS (pH 7.3) containing 1% BSA, 50% glycerol and 0.02% sodium azide.
Concentration:	1 mg/ml
Purification:	Purified from mouse ascites fluids or tissue culture supernatant by affinity chromatography (protein A/G)
Conjugation:	Unconjugated
Storage:	Store at -20°C as received.
Stability:	Stable for 12 months from date of receipt.
Predicted Protein Size:	101.7 kDa
Gene Name:	minichromosome maintenance complex component 2
Database Link:	NP_004517 Entrez Gene 17216 Mouse Entrez Gene 312538 Rat Entrez Gene 4171 Human P49736


[View online »](#)

Background:

The protein encoded by this gene is one of the highly conserved mini-chromosome maintenance proteins (MCM) that are involved in the initiation of eukaryotic genome replication. The hexameric protein complex formed by MCM proteins is a key component of the pre-replication complex (pre_RC) and may be involved in the formation of replication forks and in the recruitment of other DNA replication related proteins. This protein forms a complex with MCM4, 6, and 7, and has been shown to regulate the helicase activity of the complex. This protein is phosphorylated, and thus regulated by, protein kinases CDC2 and CDC7. Multiple alternatively spliced transcript variants have been found, but the full-length nature of some variants has not been defined. [provided by RefSeq, Oct 2012]

Synonyms:

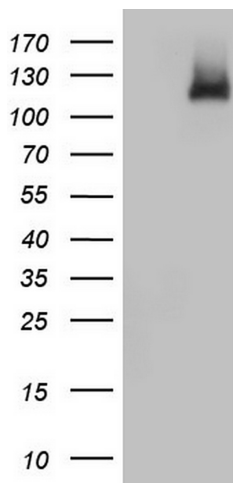
BM28; CCNL1; cdc19; CDCL1; D3S3194; MITOTIN

Protein Families:

Druggable Genome, Stem cell - Pluripotency, Transcription Factors

Protein Pathways:

Cell cycle, DNA replication

Product images:


HEK293T cells were transfected with the pCMV6-ENTRY control (Left lane) or pCMV6-ENTRY MCM2 ([RC202506], Right lane) cDNA for 48 hrs and lysed. Equivalent amounts of cell lysates (5 ug per lane) were separated by SDS-PAGE and immunoblotted with anti-MCM2. Positive lysates [LY401445] (100ug) and [LC401445] (20ug) can be purchased separately from OriGene.

