

## Product datasheet for **TA805601BM**

### Estrogen Related Receptor beta (ESRRB) Mouse Monoclonal Antibody (HRP conjugated) [Clone ID: OTI7C7]

#### Product data:

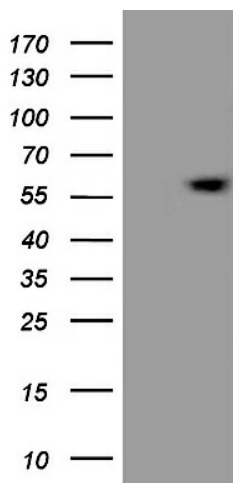
|                         |   |
|-------------------------|---|
| Product Type:           | Primary Antibodies  |
| Clone Name:             | OTI7C7  |
| Applications:           | WB  |
| Recommended Dilution:   | WB 1:500  |
| Reactivity:             | Human, Mouse, Rat   |
| Host:                   | Mouse   |
| Isotype:                | IgG1  |
| Clonality:              | Monoclonal  |
| Immunogen:              | Human recombinant protein fragment corresponding to amino acids 1-252 of human ESRRB (NP_004443) produced in E.coli.  |
| Formulation:            | PBS (pH 7.3) containing 1% BSA, 50% glycerol.   |
| Concentration:          | 0.5 mg/ml   |
| Purification:           | Purified from mouse ascites fluids or tissue culture supernatant by affinity chromatography (protein A/G)   |
| Conjugation:            | HRP   |
| Storage:                | Store at -20°C as received.   |
| Stability:              | Stable for 12 months from date of receipt.  |
| Predicted Protein Size: | 56 kDa  |
| Gene Name:              | estrogen related receptor beta  |
| Database Link:          | <a href="#">NP_004443</a><br><a href="#">Entrez Gene 26380 Mouse</a> <a href="#">Entrez Gene 299210 Rat</a> <a href="#">Entrez Gene 2103 Human</a><br><a href="#">O95718</a>  |
| Background:             | This gene encodes a protein with similarity to the estrogen receptor. Its function is unknown; however, a similar protein in mouse plays an essential role in placental development. [provided by RefSeq, Jul 2008] |
| Synonyms:               | DFNB35; ERR2; ERRb; ESRL2; NR3B2  |



[View online »](#)

Protein Families: Druggable Genome, Nuclear Hormone Receptor, Transcription Factors

### Product images:



HEK293T cells were transfected with the pCMV6-ENTRY control (Left lane) or pCMV6-ENTRY ESRRB ([RC215995], Right lane) cDNA for 48 hrs and lysed. Equivalent amounts of cell lysates (5 ug per lane) were separated by SDS-PAGE and immunoblotted with anti-ESRRB. Positive lysates [LY432280] (100ug) and [LC432280] (20ug) can be purchased separately from OriGene.