

Product datasheet for **TA805599**

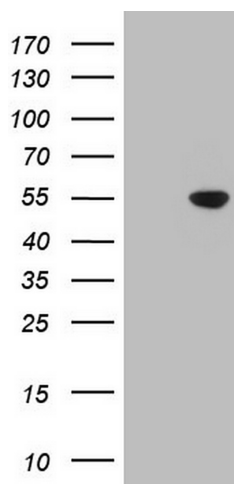
CDKL2 Mouse Monoclonal Antibody [Clone ID: OTI5D9]

Product data:

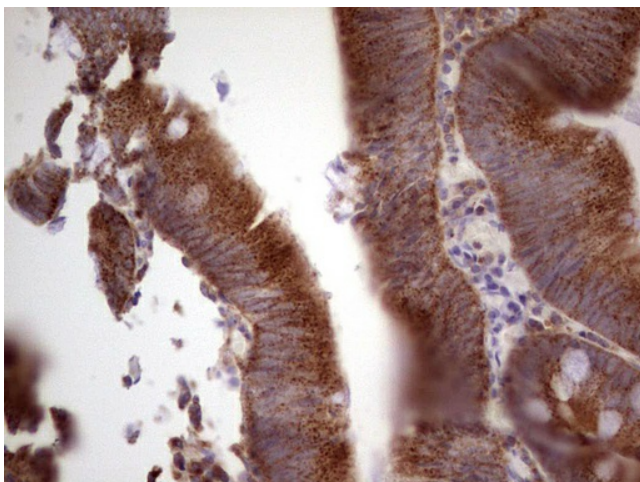
Product Type:	Primary Antibodies
Clone Name:	OTI5D9
Applications:	IHC, WB
Recommended Dilution:	WB 1:2000, IHC 1:150
Reactivity:	Human, Mouse, Rat
Host:	Mouse
Isotype:	IgG1
Clonality:	Monoclonal
Immunogen:	Human recombinant protein fragment corresponding to amino acids 291-493 of human CDKL2 (NP_003939) produced in E.coli.
Formulation:	PBS (pH 7.3) containing 1% BSA, 50% glycerol and 0.02% sodium azide.
Concentration:	1 mg/ml
Purification:	Purified from mouse ascites fluids or tissue culture supernatant by affinity chromatography (protein A/G)
Conjugation:	Unconjugated
Storage:	Store at -20°C as received.
Stability:	Stable for 12 months from date of receipt.
Predicted Protein Size:	55.8 kDa
Gene Name:	cyclin dependent kinase like 2
Database Link:	NP_003939 Entrez Gene 53886 Mouse Entrez Gene 305242 Rat Entrez Gene 8999 Human Q92772
Background:	This gene product is a member of a large family of CDC2-related serine/threonine protein kinases. It accumulates primarily in the cytoplasm, with lower levels in the nucleus. [provided by RefSeq, Jul 2008]
Synonyms:	KKIAMRE; P56
Protein Families:	Druggable Genome, Protein Kinase



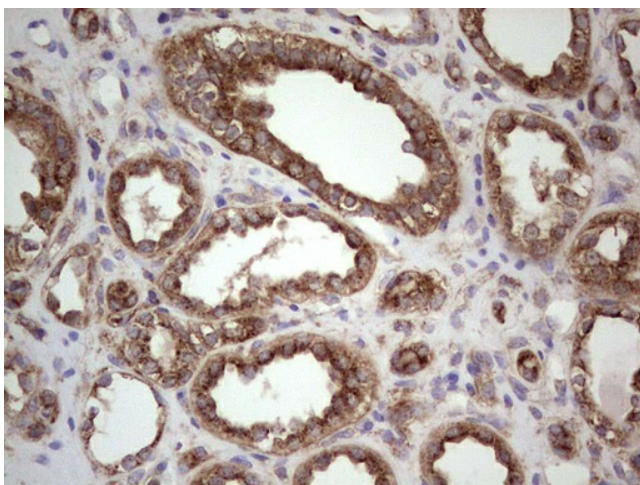
[View online »](#)

Product images:

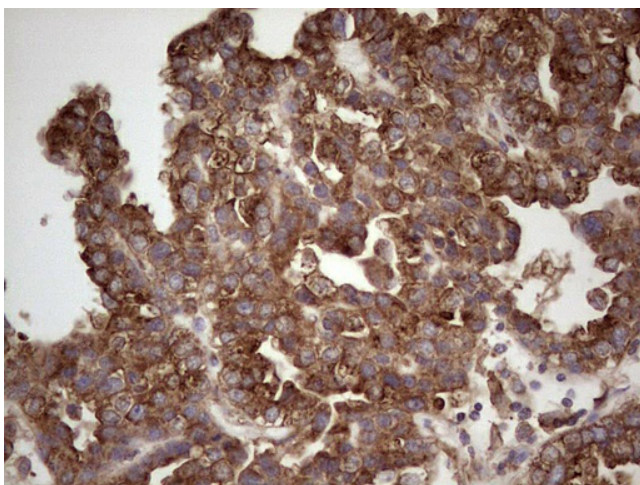
HEK293T cells were transfected with the pCMV6-ENTRY control (Left lane) or pCMV6-ENTRY CDKL2 ([RC210780], Right lane) cDNA for 48 hrs and lysed. Equivalent amounts of cell lysates (5 ug per lane) were separated by SDS-PAGE and immunoblotted with anti-CDKL2. Positive lysates [LY418330] (100ug) and [LC418330] (20ug) can be purchased separately from OriGene.



Immunohistochemical staining of paraffin-embedded Adenocarcinoma of Human colon tissue using anti-CDKL2 mouse monoclonal antibody. (Heat-induced epitope retrieval by 1mM EDTA in 10mM Tris, pH8.5, 120°C for 3min, TA805599)



Immunohistochemical staining of paraffin-embedded Human Kidney tissue within the normal limits using anti-CDKL2 mouse monoclonal antibody. (Heat-induced epitope retrieval by 1mM EDTA in 10mM Tris, pH8.5, 120°C for 3min, TA805599)



Immunohistochemical staining of paraffin-embedded Adenocarcinoma of Human ovary tissue using anti-CDKL2 mouse monoclonal antibody. (Heat-induced epitope retrieval by 1mM EDTA in 10mM Tris, pH8.5, 120°C for 3min, TA805599)