

Product datasheet for **TA805556AM**

Lipin 3 (LPIN3) Mouse Monoclonal Antibody (Biotin conjugated) [Clone ID: OTI2B7]

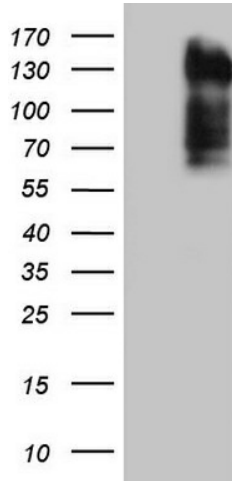
Product data:

Product Type:	Primary Antibodies
Clone Name:	OTI2B7
Applications:	WB
Recommended Dilution:	WB 1:2000
Reactivity:	Human
Host:	Mouse
Isotype:	IgG2b
Clonality:	Monoclonal
Immunogen:	Full length human recombinant protein of human LPIN3 (NP_075047) produced in HEK293T cell.
Formulation:	PBS (pH 7.3) containing 1% BSA, 50% glycerol and 0.02% sodium azide.
Concentration:	0.5 mg/ml
Purification:	Purified from mouse ascites fluids or tissue culture supernatant by affinity chromatography (protein A/G)
Conjugation:	Biotin
Storage:	Store at -20°C as received.
Stability:	Stable for 12 months from date of receipt.
Predicted Protein Size:	93.4 kDa
Gene Name:	lipin 3
Database Link:	NP_075047 Entrez Gene 64900 Human Q9BQK8
Synonyms:	LIPN3L; SMP2



[View online »](#)

Product images:



HEK293T cells were transfected with the pCMV6-ENTRY control (Left lane) or pCMV6-ENTRY LPIN3 ([RC215286], Right lane) cDNA for 48 hrs and lysed. Equivalent amounts of cell lysates (5 ug per lane) were separated by SDS-PAGE and immunoblotted with anti-LPIN3. Positive lysates [LY411469] (100ug) and [LC411469] (20ug) can be purchased separately from OriGene.