

Product datasheet for **TA805544BM**

GFI1 Mouse Monoclonal Antibody (HRP conjugated) [Clone ID: OTI6E8]

Product data:

Product Type:	Primary Antibodies
Clone Name:	OTI6E8
Applications:	IHC, WB
Recommended Dilution:	WB 1:2000, IHC 1:150
Reactivity:	Human, Mouse, Rat
Host:	Mouse
Isotype:	IgG1
Clonality:	Monoclonal
Immunogen:	Human recombinant protein fragment corresponding to amino acids 1-180 of human GFI1(NP_005254) produced in E.coli.
Formulation:	PBS (pH 7.3) containing 1% BSA, 50% glycerol.
Concentration:	0.5 mg/ml
Purification:	Purified from mouse ascites fluids or tissue culture supernatant by affinity chromatography (protein A/G)
Conjugation:	HRP
Storage:	Store at -20°C as received.
Stability:	Stable for 12 months from date of receipt.
Predicted Protein Size:	45.1 kDa
Gene Name:	growth factor independent 1 transcriptional repressor
Database Link:	NP_005254 Entrez Gene 14581 Mouse Entrez Gene 24388 Rat Entrez Gene 2672 Human Q99684



[View online »](#)

Background:

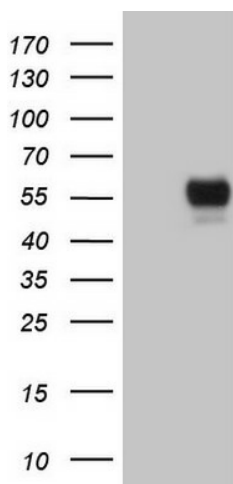
This gene encodes a nuclear zinc finger protein that functions as a transcriptional repressor. This protein plays a role in diverse developmental contexts, including hematopoiesis and oncogenesis. It functions as part of a complex along with other cofactors to control histone modifications that lead to silencing of the target gene promoters. Mutations in this gene cause autosomal dominant severe congenital neutropenia, and also dominant nonimmune chronic idiopathic neutropenia of adults, which are heterogeneous hematopoietic disorders that cause predispositions to leukemias and infections. Multiple alternatively spliced variants, encoding the same protein, have been identified for this gene. [provided by RefSeq, Jul 2008]

Synonyms:

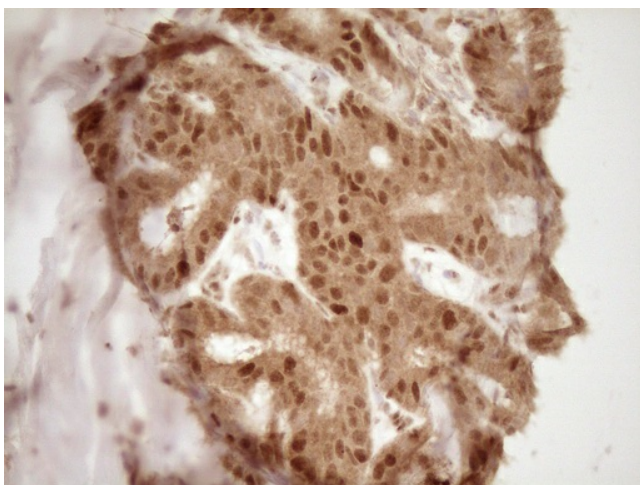
GFI-1; GFI1A; SCN2; ZNF163

Protein Families:

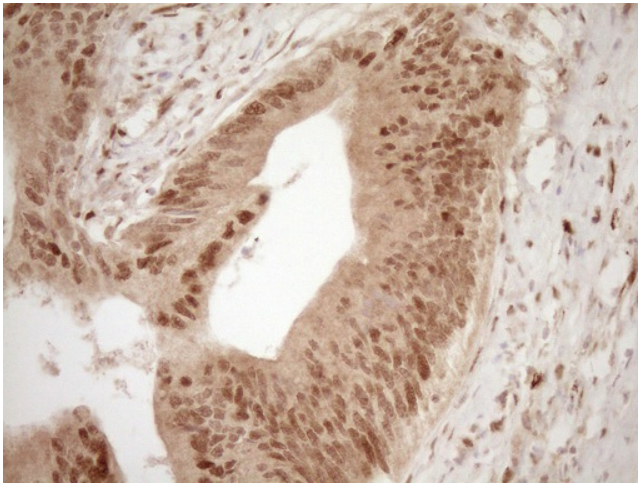
Druggable Genome, Transcription Factors

Product images:


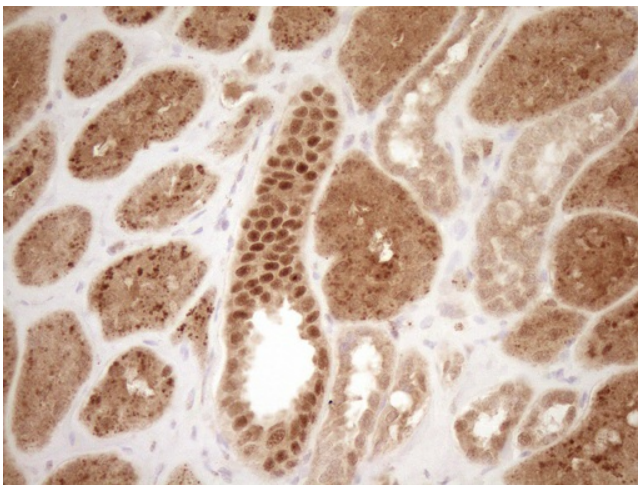
HEK293T cells were transfected with the pCMV6-ENTRY control (Cat# [PS100001], Left lane) or pCMV6-ENTRY GFI1 (Cat# [RC207574], Right lane) cDNA for 48 hrs and lysed. Equivalent amounts of cell lysates (5 ug per lane) were separated by SDS-PAGE and immunoblotted with anti-GFI1 (Cat# [TA805544]). Positive lysates [LY417416] (100ug) and [LC417416] (20ug) can be purchased separately from OriGene.



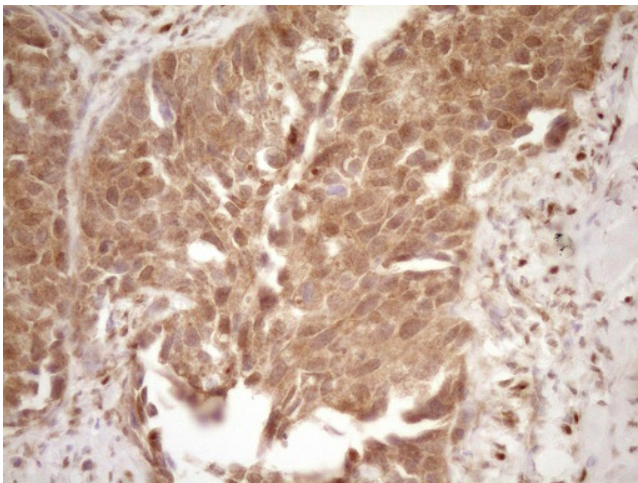
Immunohistochemical staining of paraffin-embedded Human colon tissue within the normal limits using anti-GFI1 mouse monoclonal antibody. (Heat-induced epitope retrieval by 1mM EDTA in 10mM Tris, pH8.5, 120°C for 3min, [TA805544])



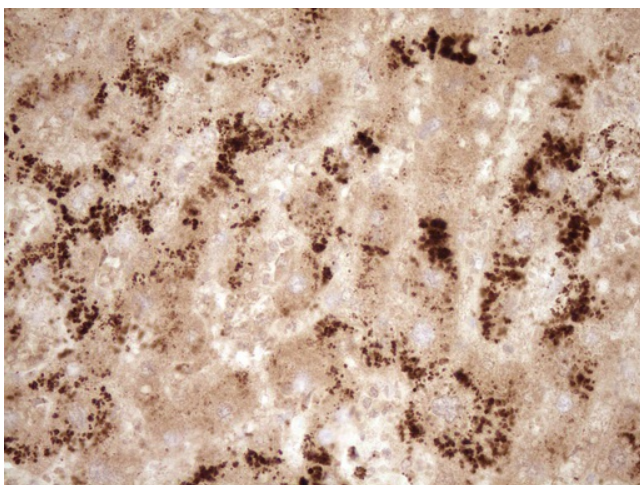
Immunohistochemical staining of paraffin-embedded Adenocarcinoma of Human colon tissue using anti-GFI1 mouse monoclonal antibody. (Heat-induced epitope retrieval by 1mM EDTA in 10mM Tris, pH8.5, 120°C for 3min, [TA805544])



Immunohistochemical staining of paraffin-embedded Human Kidney tissue within the normal limits using anti-GFI1 mouse monoclonal antibody. (Heat-induced epitope retrieval by 1mM EDTA in 10mM Tris, pH8.5, 120°C for 3min, [TA805544])



Immunohistochemical staining of paraffin-embedded Carcinoma of Human kidney tissue using anti-GFI1 mouse monoclonal antibody. (Heat-induced epitope retrieval by 1mM EDTA in 10mM Tris, pH8.5, 120°C for 3min, [TA805544])



Immunohistochemical staining of paraffin-embedded Human liver tissue within the normal limits using anti-GF11 mouse monoclonal antibody. (Heat-induced epitope retrieval by 1mM EDTA in 10mM Tris, pH8.5, 120°C for 3min, [TA805544])