

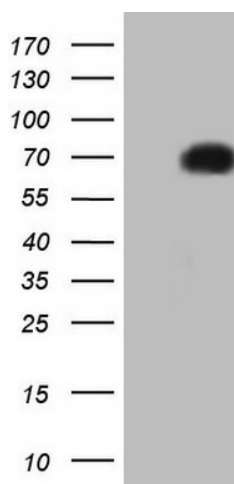
Product datasheet for **TA805501AM**

LRRTM1 Mouse Monoclonal Antibody (Biotin conjugated) [Clone ID: OTI1C9]

Product data:

Product Type:	Primary Antibodies
Clone Name:	OTI1C9
Applications:	WB
Recommended Dilution:	WB 1:2000
Reactivity:	Human, Mouse, Rat
Host:	Mouse
Isotype:	IgG2a
Clonality:	Monoclonal
Immunogen:	Human recombinant protein fragment corresponding to amino acids 182-422 of human LRRTM1 (NP_849161) produced in E.coli.
Formulation:	PBS (pH 7.3) containing 1% BSA, 50% glycerol and 0.02% sodium azide.
Concentration:	0.5 mg/ml
Purification:	Purified from mouse ascites fluids or tissue culture supernatant by affinity chromatography (protein A/G)
Conjugation:	Biotin
Storage:	Store at -20°C as received.
Stability:	Stable for 12 months from date of receipt.
Predicted Protein Size:	58.5 kDa
Gene Name:	leucine rich repeat transmembrane neuronal 1
Database Link:	NP_849161 Entrez Gene 74342 Mouse Entrez Gene 679668 Rat Entrez Gene 347730 Human Q86UE6
Synonyms:	FLJ32082
Protein Families:	Transmembrane


[View online »](#)

Product images:


HEK293T cells were transfected with the pCMV6-ENTRY control (Left lane) or pCMV6-ENTRY LRRTM1 ([RC207949], Right lane) cDNA for 48 hrs and lysed. Equivalent amounts of cell lysates (5 ug per lane) were separated by SDS-PAGE and immunoblotted with anti-LRRTM1. Positive lysates [LY405855] (100ug) and [LC405855] (20ug) can be purchased separately from OriGene.