

## Product datasheet for **TA805460BM**

### TLK2 Mouse Monoclonal Antibody (HRP conjugated) [Clone ID: OTI2E10]

#### Product data:

Product Type:	Primary Antibodies
Clone Name:	OTI2E10
Applications:	WB
Recommended Dilution:	WB 1:2000
Reactivity:	Human, Mouse, Rat
Host:	Mouse
Isotype:	IgG1
Clonality:	Monoclonal
Immunogen:	Human recombinant protein fragment corresponding to amino acids 1-296 of human TLK2 (NP_006843) produced in E.coli.
Formulation:	PBS (pH 7.3) containing 1% BSA, 50% glycerol.
Concentration:	0.5 mg/ml
Purification:	Purified from mouse ascites fluids or tissue culture supernatant by affinity chromatography (protein A/G)
Conjugation:	HRP
Storage:	Store at -20°C as received.
Stability:	Stable for 12 months from date of receipt.
Predicted Protein Size:	85.3 kDa
Gene Name:	tousled like kinase 2
Database Link:	<a href="#">NP_006843</a> <a href="#">Entrez Gene 24086 Mouse</a> <a href="#">Entrez Gene 303592 Rat</a> <a href="#">Entrez Gene 11011 Human</a> <a href="#">Q86UE8</a>
Background:	This gene encodes a nuclear serine/threonine kinase that was first identified in Arabidopsis. The encoded protein is thought to function in the regulation of chromatin assembly in the S phase of the cell cycle by regulating the levels of a histone H3/H4 chaperone. This protein is associated with double-strand break repair of DNA damage caused by radiation. Pseudogenes of this gene are present on chromosomes 10 and 17. Alternate splicing results in multiple transcript variants. [provided by RefSeq, Sep 2013]

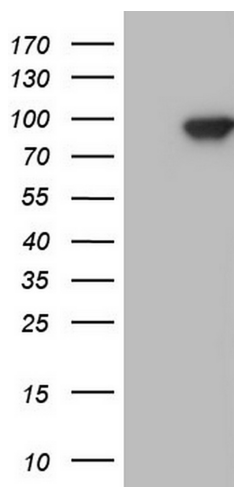


[View online »](#)

Synonyms: HsHPK; PKU-ALPHA

Protein Families: Druggable Genome, Protein Kinase

### Product images:



HEK293T cells were transfected with the pCMV6-ENTRY control (Left lane) or pCMV6-ENTRY TLK2 ([RC218935], Right lane) cDNA for 48 hrs and lysed. Equivalent amounts of cell lysates (5 ug per lane) were separated by SDS-PAGE and immunoblotted with anti-TLK2. Positive lysates [LY416375] (100ug) and [LC416375] (20ug) can be purchased separately from OriGene.