

Product datasheet for **TA805455**

Estrogen Related Receptor beta (ESRRB) Mouse Monoclonal Antibody [Clone ID: OTI1E6]

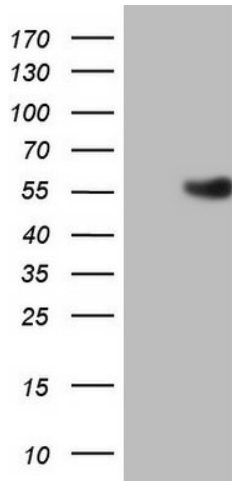
Product data:

Product Type:	Primary Antibodies
Clone Name:	OTI1E6
Applications:	WB
Recommended Dilution:	WB 1:2000
Reactivity:	Human, Mouse, Rat
Host:	Mouse
Isotype:	IgG2a
Clonality:	Monoclonal
Immunogen:	Human recombinant protein fragment corresponding to amino acids 1-252 of human ESRRB (NP_004443) produced in E.coli.
Formulation:	PBS (pH 7.3) containing 1% BSA, 50% glycerol and 0.02% sodium azide.
Concentration:	1 mg/ml
Purification:	Purified from mouse ascites fluids or tissue culture supernatant by affinity chromatography (protein A/G)
Conjugation:	Unconjugated
Storage:	Store at -20°C as received.
Stability:	Stable for 12 months from date of receipt.
Gene Name:	estrogen related receptor beta
Database Link:	NP_004443 Entrez Gene 26380 Mouse Entrez Gene 299210 Rat Entrez Gene 2103 Human O95718
Synonyms:	DFNB35; ERR2; ERRb; ESRL2; NR3B2
Protein Families:	Druggable Genome, Nuclear Hormone Receptor, Transcription Factors



[View online »](#)

Product images:



HEK293T cells were transfected with the pCMV6-ENTRY control (Left lane) or pCMV6-ENTRY ESRRB ([RC215995], Right lane) cDNA for 48 hrs and lysed. Equivalent amounts of cell lysates (5 ug per lane) were separated by SDS-PAGE and immunoblotted with anti-ESRRB. Positive lysates [LY432280] (100ug) and [LC432280] (20ug) can be purchased separately from OriGene.