

## Product datasheet for **TA805446S**

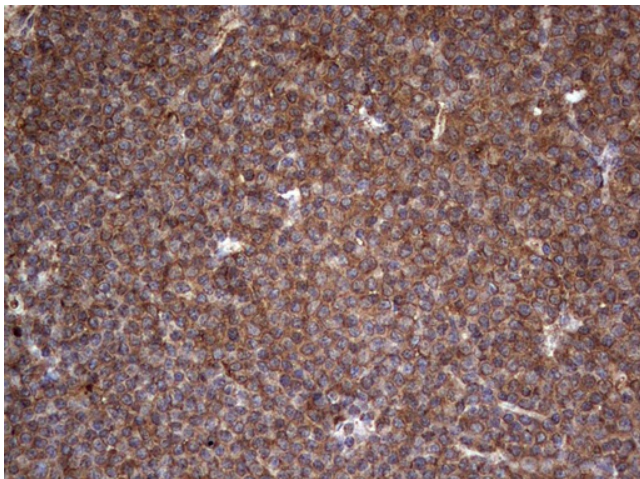
### LRRTM1 Mouse Monoclonal Antibody [Clone ID: OTI1C5]

#### Product data:

Product Type:	Primary Antibodies
Clone Name:	OTI1C5
Applications:	IHC
Recommended Dilution:	IHC 1:150
Reactivity:	Human, Mouse, Rat
Host:	Mouse
Isotype:	IgG2a
Clonality:	Monoclonal
Immunogen:	Human recombinant protein fragment corresponding to amino acids 182-422 of human LRRTM1 (NP_849161) produced in E.coli.
Formulation:	PBS (pH 7.3) containing 1% BSA, 50% glycerol and 0.02% sodium azide.
Concentration:	1 mg/ml
Purification:	Purified from mouse ascites fluids or tissue culture supernatant by affinity chromatography (protein A/G)
Conjugation:	Unconjugated
Storage:	Store at -20°C as received.
Stability:	Stable for 12 months from date of receipt.
Predicted Protein Size:	58.5 kDa
Gene Name:	leucine rich repeat transmembrane neuronal 1
Database Link:	<a href="#">NP_849161</a> <a href="#">Entrez Gene 74342 Mouse</a> <a href="#">Entrez Gene 679668 Rat</a> <a href="#">Entrez Gene 347730 Human</a> <a href="#">Q86UE6</a>
Synonyms:	FLJ32082
Protein Families:	Transmembrane



[View online »](#)

**Product images:**

Immunohistochemical staining of paraffin-embedded Human lymphoma tissue using anti-LRRTM1 mouse monoclonal antibody. (Heat-induced epitope retrieval by 1mM EDTA in 10mM Tris, pH8.5, 120°C for 3min, [TA805446])