

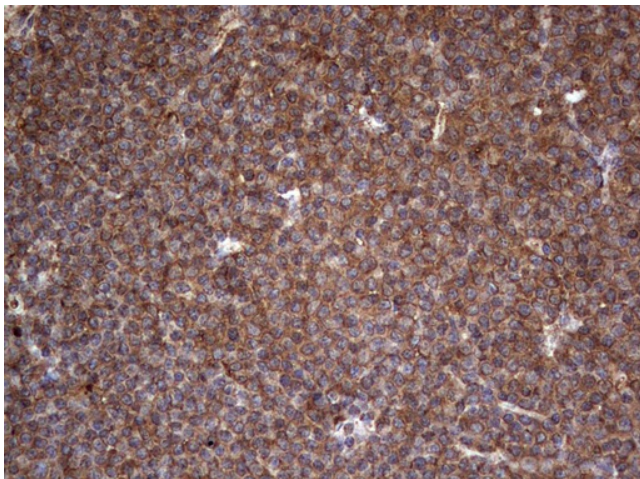
Product datasheet for **TA805446M**

LRRTM1 Mouse Monoclonal Antibody [Clone ID: OTI1C5]

Product data:

Product Type:	Primary Antibodies
Clone Name:	OTI1C5
Applications:	IHC
Recommended Dilution:	IHC 1:150
Reactivity:	Human, Mouse, Rat
Host:	Mouse
Isotype:	IgG2a
Clonality:	Monoclonal
Immunogen:	Human recombinant protein fragment corresponding to amino acids 182-422 of human LRRTM1 (NP_849161) produced in E.coli.
Formulation:	PBS (pH 7.3) containing 1% BSA, 50% glycerol and 0.02% sodium azide.
Concentration:	1 mg/ml
Purification:	Purified from mouse ascites fluids or tissue culture supernatant by affinity chromatography (protein A/G)
Conjugation:	Unconjugated
Storage:	Store at -20°C as received.
Stability:	Stable for 12 months from date of receipt.
Predicted Protein Size:	58.5 kDa
Gene Name:	leucine rich repeat transmembrane neuronal 1
Database Link:	NP_849161 Entrez Gene 74342 Mouse Entrez Gene 679668 Rat Entrez Gene 347730 Human Q86UE6
Synonyms:	FLJ32082
Protein Families:	Transmembrane


[View online »](#)

Product images:

Immunohistochemical staining of paraffin-embedded Human lymphoma tissue using anti-LRRTM1 mouse monoclonal antibody. Heat-induced epitope retrieval by EDTA solution buffer pH 8.0 at 120°C for 3 min.