

Product datasheet for **TA805445AM**

hnRNP L (HNRNPL) Mouse Monoclonal Antibody (Biotin conjugated) [Clone ID: OTI9G7]

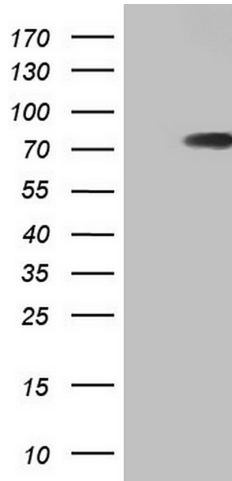
Product data:

Product Type:	Primary Antibodies
Clone Name:	OTI9G7
Applications:	IHC, WB
Recommended Dilution:	WB 1:2000, IHC 1:150
Reactivity:	Human, Mouse, Rat
Host:	Mouse
Isotype:	IgG1
Clonality:	Monoclonal
Immunogen:	Human recombinant protein fragment corresponding to amino acids 270-502 of human HNRNPL (NP_001524) produced in E.coli.
Formulation:	PBS (pH 7.3) containing 1% BSA, 50% glycerol and 0.02% sodium azide.
Concentration:	0.5 mg/ml
Purification:	Purified from mouse ascites fluids or tissue culture supernatant by affinity chromatography (protein A/G)
Conjugation:	Biotin
Storage:	Store at -20°C as received.
Stability:	Stable for 12 months from date of receipt.
Predicted Protein Size:	64 kDa
Gene Name:	heterogeneous nuclear ribonucleoprotein L
Database Link:	NP_001524 Entrez Gene 15388 Mouse Entrez Gene 80846 Rat Entrez Gene 3191 Human P14866
Synonyms:	hnRNP-L; HNRPL; P/OKcl.14

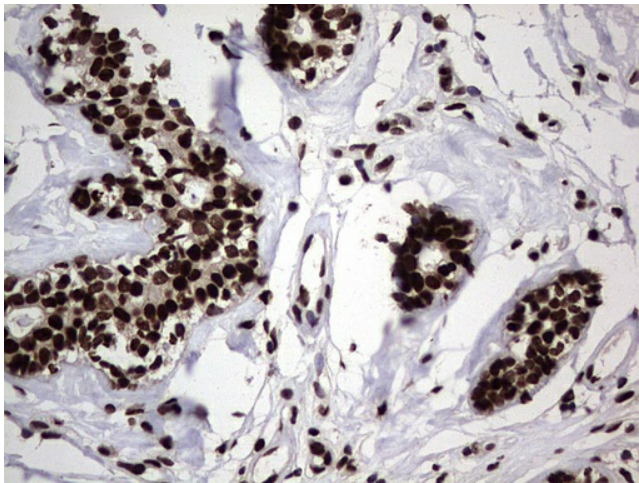


[View online »](#)

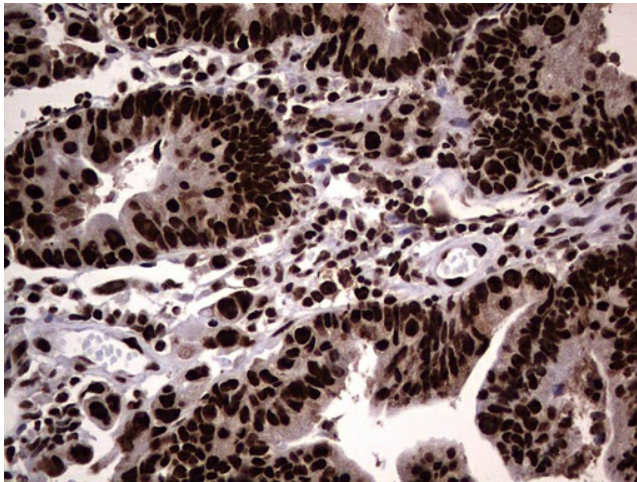
Product images:



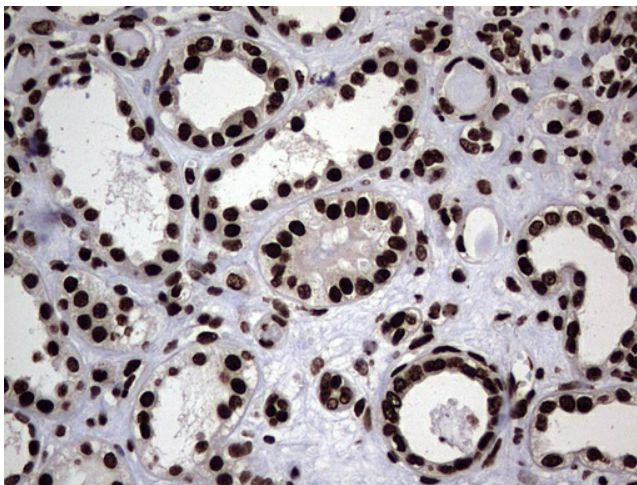
HEK293T cells were transfected with the pCMV6-ENTRY control (Left lane) or pCMV6-ENTRY HNRNPL [RC219240], Right lane) cDNA for 48 hrs and lysed. Equivalent amounts of cell lysates (5 ug per lane) were separated by SDS-PAGE and immunoblotted with anti-HNRNPL. Positive lysates [LY400589] (100ug) and [LC400589] (20ug) can be purchased separately from OriGene.



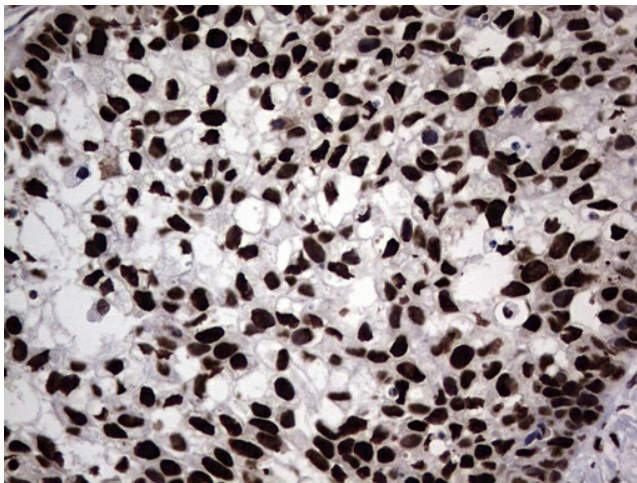
Immunohistochemical staining of paraffin-embedded Human breast tissue within the normal limits using anti-HNRNPL mouse monoclonal antibody. (Heat-induced epitope retrieval by 1mM EDTA in 10mM Tris, pH8.5, 120°C for 3min, [TA805445])



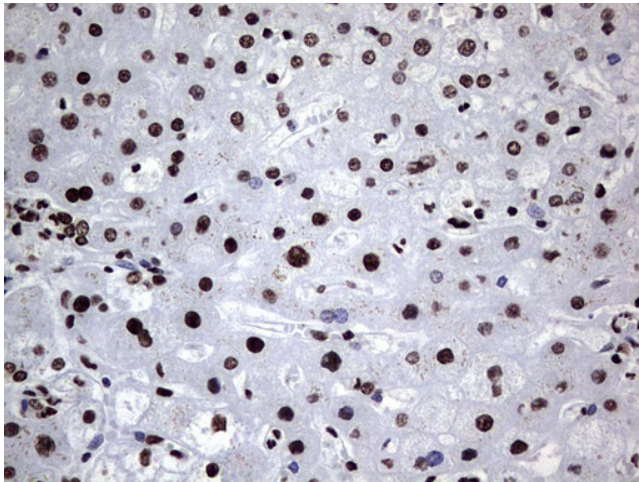
Immunohistochemical staining of paraffin-embedded Adenocarcinoma of Human colon tissue using anti-HNRNPL mouse monoclonal antibody. (Heat-induced epitope retrieval by 1mM EDTA in 10mM Tris, pH8.5, 120°C for 3min, [TA805445])



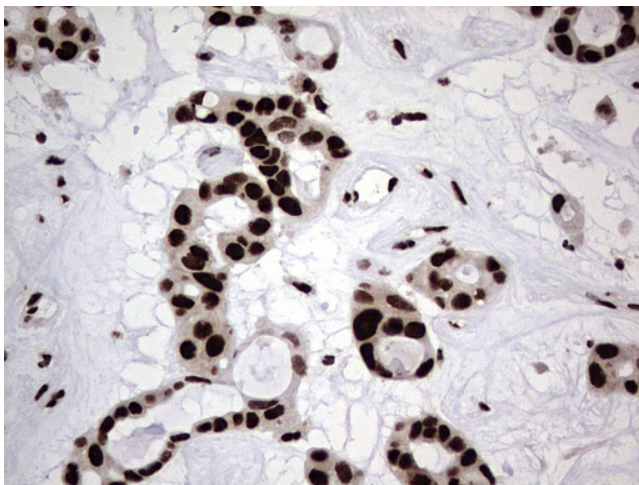
Immunohistochemical staining of paraffin-embedded Human Kidney tissue within the normal limits using anti-HNRNPL mouse monoclonal antibody. (Heat-induced epitope retrieval by 1mM EDTA in 10mM Tris, pH8.5, 120°C for 3min, [TA805445])



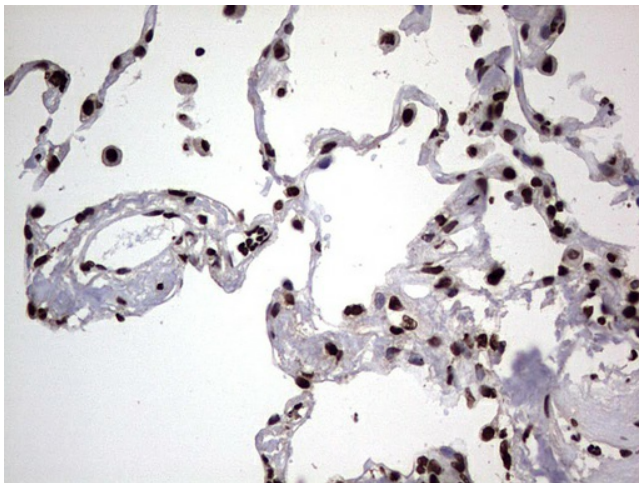
Immunohistochemical staining of paraffin-embedded Carcinoma of Human kidney tissue using anti-HNRNPL mouse monoclonal antibody. (Heat-induced epitope retrieval by 1mM EDTA in 10mM Tris, pH8.5, 120°C for 3min, [TA805445])



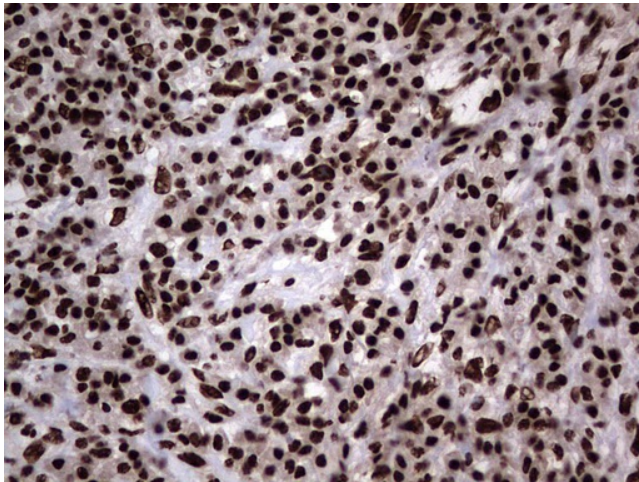
Immunohistochemical staining of paraffin-embedded Human liver tissue within the normal limits using anti-HNRNPL mouse monoclonal antibody. (Heat-induced epitope retrieval by 1mM EDTA in 10mM Tris, pH8.5, 120°C for 3min, [TA805445])



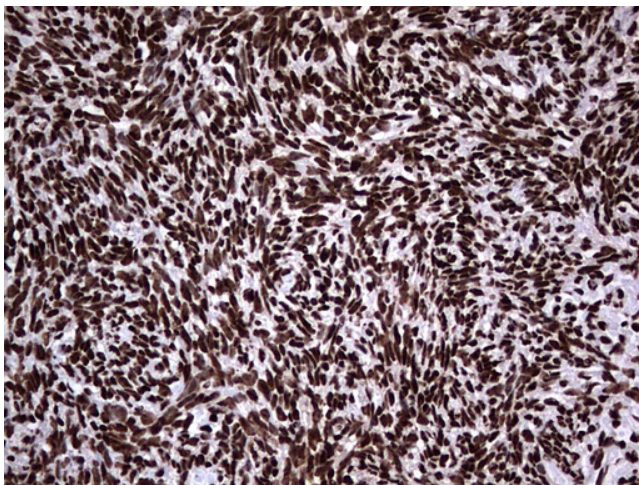
Immunohistochemical staining of paraffin-embedded Carcinoma of Human liver tissue using anti-HNRNPL mouse monoclonal antibody. (Heat-induced epitope retrieval by 1mM EDTA in 10mM Tris, pH8.5, 120°C for 3min, [TA805445])



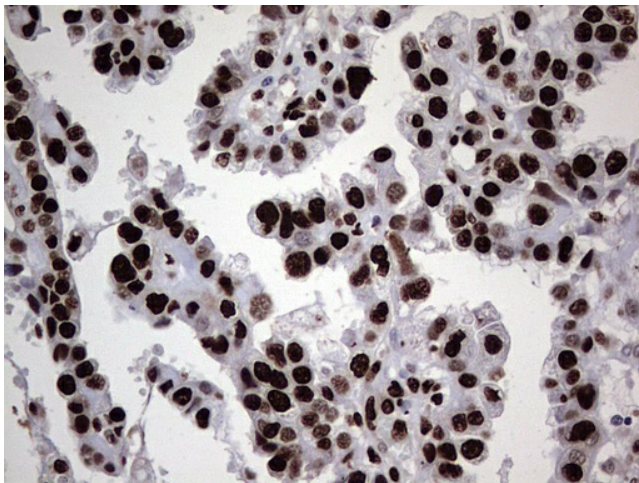
Immunohistochemical staining of paraffin-embedded Human lung tissue within the normal limits using anti-HNRNPL mouse monoclonal antibody. (Heat-induced epitope retrieval by 1mM EDTA in 10mM Tris, pH8.5, 120°C for 3min, [TA805445])



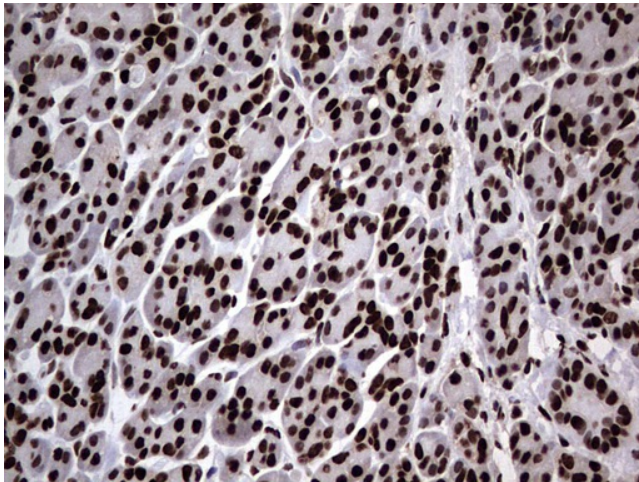
Immunohistochemical staining of paraffin-embedded Carcinoma of Human lung tissue using anti-HNRNPL mouse monoclonal antibody. (Heat-induced epitope retrieval by 1mM EDTA in 10mM Tris, pH8.5, 120°C for 3min, [TA805445])



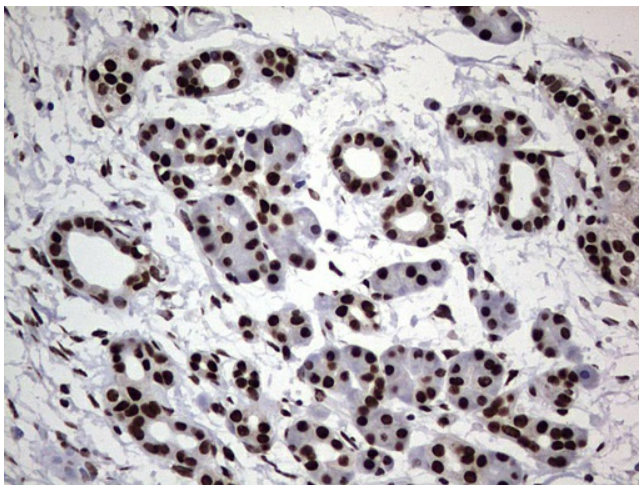
Immunohistochemical staining of paraffin-embedded Human Ovary tissue within the normal limits using anti-HNRNPL mouse monoclonal antibody. (Heat-induced epitope retrieval by 1mM EDTA in 10mM Tris, pH8.5, 120°C for 3min, [TA805445])



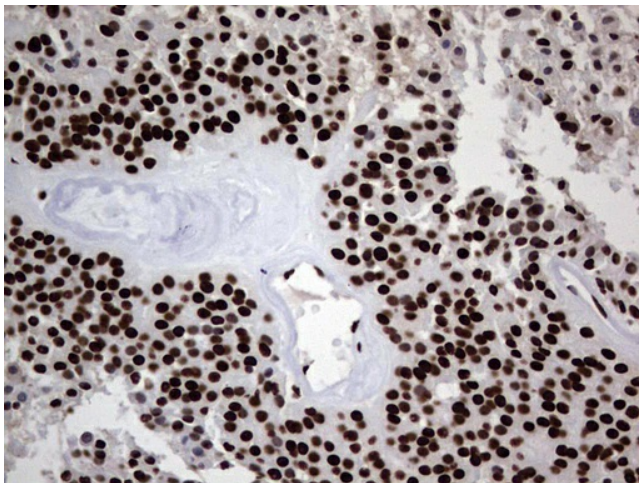
Immunohistochemical staining of paraffin-embedded Adenocarcinoma of Human ovary tissue using anti-HNRNPL mouse monoclonal antibody. (Heat-induced epitope retrieval by 1mM EDTA in 10mM Tris, pH8.5, 120°C for 3min, [TA805445])



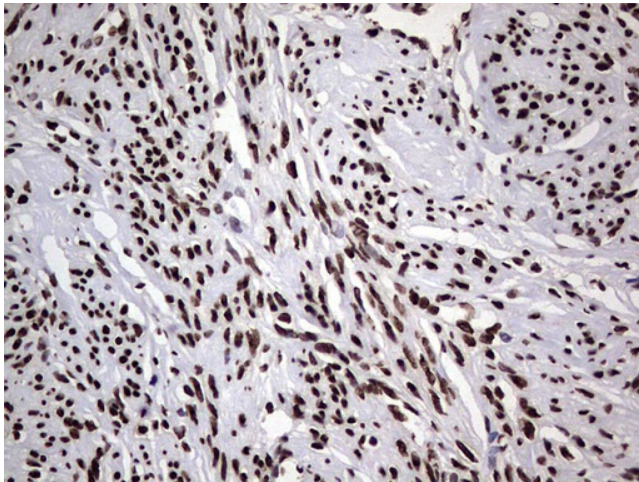
Immunohistochemical staining of paraffin-embedded Human pancreas tissue within the normal limits using anti-HNRNPL mouse monoclonal antibody. (Heat-induced epitope retrieval by 1mM EDTA in 10mM Tris, pH8.5, 120°C for 3min, [TA805445])



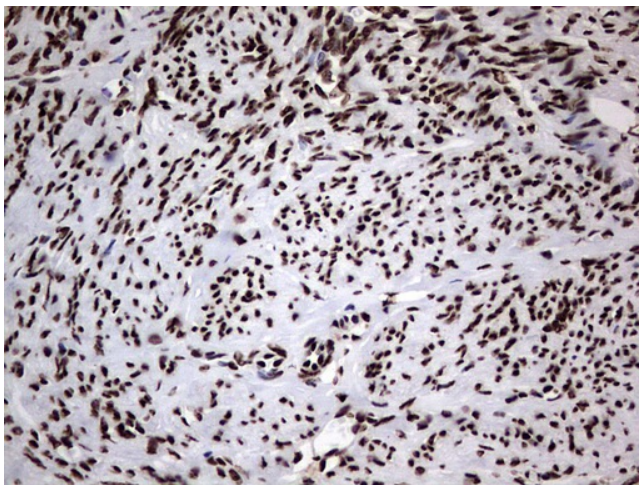
Immunohistochemical staining of paraffin-embedded Carcinoma of Human pancreas tissue using anti-HNRNPL mouse monoclonal antibody. (Heat-induced epitope retrieval by 1mM EDTA in 10mM Tris, pH8.5, 120°C for 3min, [TA805445])



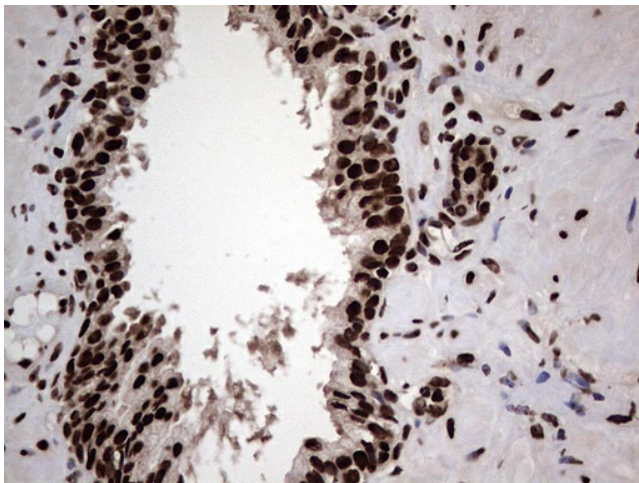
Immunohistochemical staining of paraffin-embedded Carcinoma of Human thyroid tissue using anti-HNRNPL mouse monoclonal antibody. (Heat-induced epitope retrieval by 1mM EDTA in 10mM Tris, pH8.5, 120°C for 3min, [TA805445])



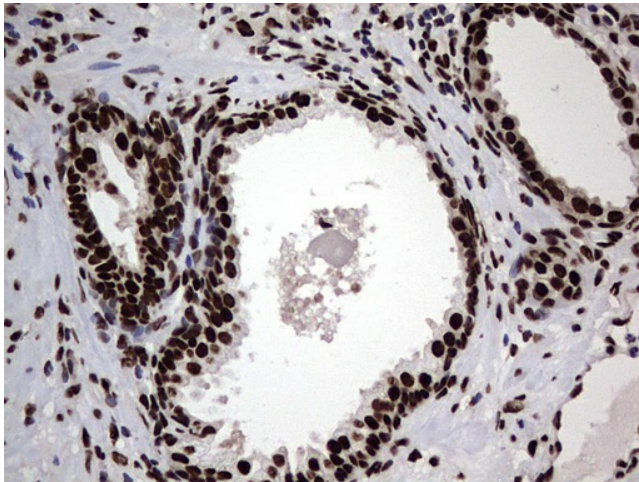
Immunohistochemical staining of paraffin-embedded Human endometrium tissue within the normal limits using anti-HNRNPL mouse monoclonal antibody. (Heat-induced epitope retrieval by 1mM EDTA in 10mM Tris, pH8.5, 120°C for 3min, [TA805445])



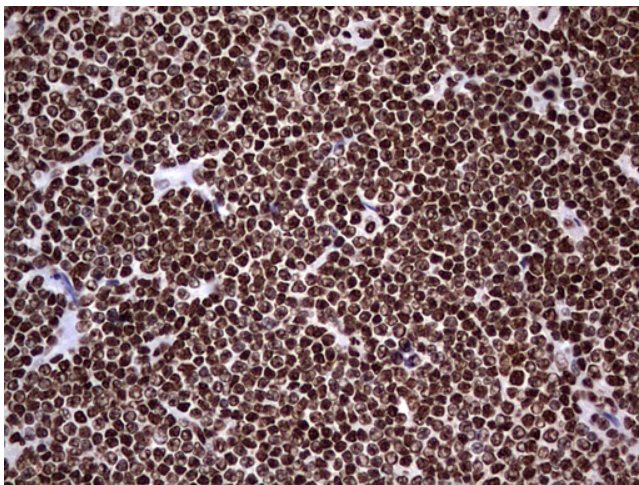
Immunohistochemical staining of paraffin-embedded Adenocarcinoma of Human endometrium tissue using anti-HNRNPL mouse monoclonal antibody. (Heat-induced epitope retrieval by 1mM EDTA in 10mM Tris, pH8.5, 120°C for 3min, [TA805445])



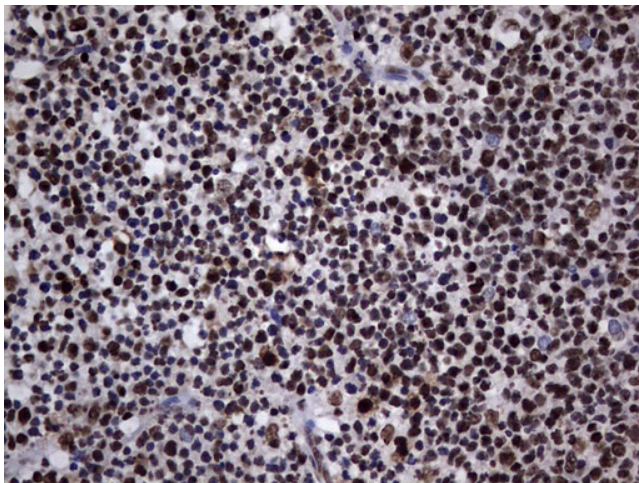
Immunohistochemical staining of paraffin-embedded Human prostate tissue within the normal limits using anti-HNRNPL mouse monoclonal antibody. (Heat-induced epitope retrieval by 1mM EDTA in 10mM Tris, pH8.5, 120°C for 3min, [TA805445])



Immunohistochemical staining of paraffin-embedded Carcinoma of Human prostate tissue using anti-HNRNPL mouse monoclonal antibody. (Heat-induced epitope retrieval by 1mM EDTA in 10mM Tris, pH8.5, 120°C for 3min, [TA805445])



Immunohistochemical staining of paraffin-embedded Human lymphoma tissue using anti-HNRNPL mouse monoclonal antibody. (Heat-induced epitope retrieval by 1mM EDTA in 10mM Tris, pH8.5, 120°C for 3min, [TA805445])



Immunohistochemical staining of paraffin-embedded Human tonsil within the normal limits using anti-HNRNPL mouse monoclonal antibody. (Heat-induced epitope retrieval by 1mM EDTA in 10mM Tris, pH8.5, 120°C for 3min, [TA805445])