

Product datasheet for **TA805438BM**

MTF1 Mouse Monoclonal Antibody (HRP conjugated) [Clone ID: OTI1G4]

Product data:

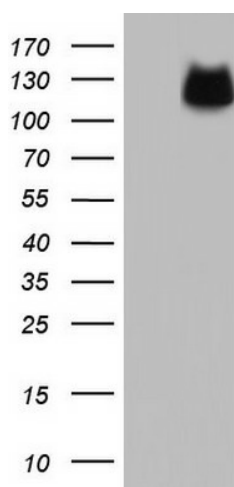
Product Type:	Primary Antibodies
Clone Name:	OTI1G4
Applications:	WB
Recommended Dilution:	WB 1:2000
Reactivity:	Human, Mouse, Rat
Host:	Mouse
Isotype:	IgG2b
Clonality:	Monoclonal
Immunogen:	Human recombinant protein fragment corresponding to amino acids 1-272 of human MTF1 (NP_005946) produced in E.coli.
Formulation:	PBS (pH 7.3) containing 1% BSA, 50% glycerol.
Concentration:	0.5 mg/ml
Purification:	Purified from mouse ascites fluids or tissue culture supernatant by affinity chromatography (protein A/G)
Conjugation:	HRP
Storage:	Store at -20°C as received.
Stability:	Stable for 12 months from date of receipt.
Predicted Protein Size:	80.8 kDa
Gene Name:	metal-regulatory transcription factor 1
Database Link:	NP_005946 Entrez Gene 4520 Human Q14872
Background:	This gene encodes a transcription factor that induces expression of metallothioneins and other genes involved in metal homeostasis in response to heavy metals such as cadmium, zinc, copper, and silver. The protein is a nucleocytoplasmic shuttling protein that accumulates in the nucleus upon heavy metal exposure and binds to promoters containing a metal-responsive element (MRE). [provided by RefSeq, Jul 2008]



[View online »](#)

Synonyms: MTF-1; ZRF
Protein Families: Transcription Factors

Product images:



HEK293T cells were transfected with the pCMV6-ENTRY control (Left lane) or pCMV6-ENTRY MTF1 ([RC204861], Right lane) cDNA for 48 hrs and lysed. Equivalent amounts of cell lysates (5 ug per lane) were separated by SDS-PAGE and immunoblotted with anti-MTF1. Positive lysates [LY401804] (100ug) and [LC401804] (20ug) can be purchased separately from OriGene.