

## Product datasheet for **TA805434AM**

### Progesterone Receptor (PGR) Mouse Monoclonal Antibody (Biotin conjugated) [Clone ID: OTI24D6]

#### Product data:

Product Type:	Primary Antibodies
Clone Name:	OTI24D6
Applications:	IHC, WB
Recommended Dilution:	IHC 1:150
Reactivity:	Human
Host:	Mouse
Isotype:	IgG2b
Clonality:	Monoclonal
Immunogen:	Human recombinant protein fragment corresponding to amino acids 1-298 of human PGR (NP_000917) produced in E.coli.
Formulation:	PBS (pH 7.3) containing 1% BSA, 50% glycerol and 0.02% sodium azide.
Concentration:	0.5 mg/ml
Purification:	Purified from mouse ascites fluids or tissue culture supernatant by affinity chromatography (protein A/G)
Conjugation:	Biotin
Storage:	Store at -20°C as received.
Stability:	Stable for 12 months from date of receipt.
Predicted Protein Size:	98.8 kDa
Gene Name:	progesterone receptor
Database Link:	<a href="#">NP_000917</a> <a href="#">Entrez Gene 5241 Human</a> <a href="#">P06401</a>



[View online »](#)

**Background:**

This gene encodes a member of the steroid receptor superfamily. The encoded protein mediates the physiological effects of progesterone, which plays a central role in reproductive events associated with the establishment and maintenance of pregnancy. This gene uses two distinct promoters and translation start sites in the first exon to produce two isoforms, A and B. The two isoforms are identical except for the additional 165 amino acids found in the N-terminus of isoform B and mediate their own response genes and physiologic effects with little overlap. [provided by RefSeq, Jan 2011]

**Synonyms:**

NR3C3; PR

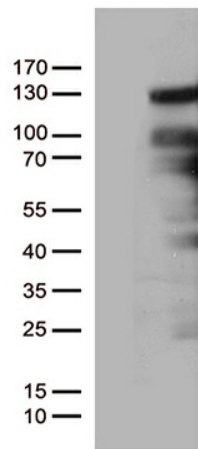
**Protein Families:**

Druggable Genome, Nuclear Hormone Receptor, Transcription Factors

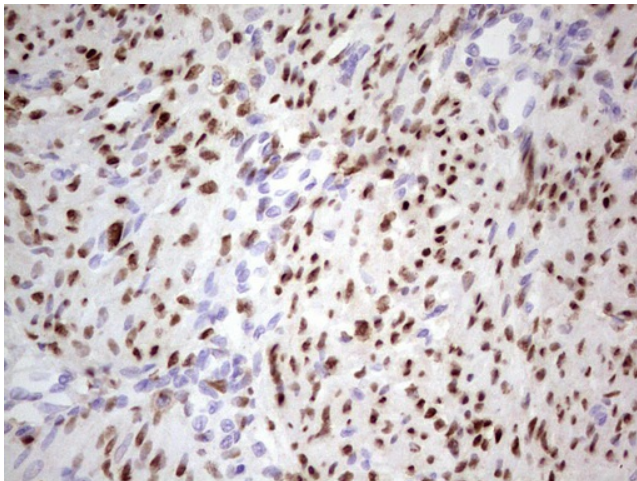
**Protein Pathways:**

Oocyte meiosis, Progesterone-mediated oocyte maturation

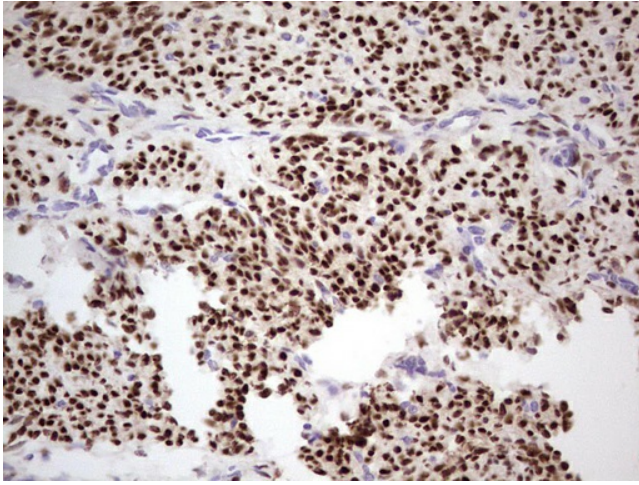
**Product images:**



HEK293T cells were transfected with the pCMV6-ENTRY control (Left lane) or pCMV6-ENTRY PGR ([RC221303], Right lane) cDNA for 48 hrs and lysed. Equivalent amounts of cell lysates (5 ug per lane) were separated by SDS-PAGE and immunoblotted with anti-PGR. (1:5. Positive lysates [LY424456] (100ug) and [LC424456] (20ug) can be purchased separately from OriGene.



Immunohistochemical staining of paraffin-embedded Human endometrium tissue within the normal limits using anti-PGR mouse monoclonal antibody. ([TA805434]; heat-induced epitope retrieval by 1mM EDTA in 10mM Tris, pH8.5, 120°C for 3min)



Immunohistochemical staining of paraffin-embedded Adenocarcinoma of Human endometrium tissue using anti-PGR mouse monoclonal antibody. ([TA805434]; heat-induced epitope retrieval by 1mM EDTA in 10mM Tris, pH8.5, 120°C for 3min)