

## Product datasheet for **TA805382BM**

### **TWIST2 Mouse Monoclonal Antibody (HRP conjugated) [Clone ID: OTI1C4]**

#### **Product data:**

Product Type:	Primary Antibodies
Clone Name:	OTI1C4
Applications:	WB
Recommended Dilution:	WB 1:2000
Reactivity:	Human, Mouse, Rat
Host:	Mouse
Isotype:	IgG1
Clonality:	Monoclonal
Immunogen:	Full length human recombinant protein of human TWIST2 (NP_476527) produced in E.coli.
Formulation:	PBS (pH 7.3) containing 1% BSA, 50% glycerol.
Concentration:	0.5 mg/ml
Purification:	Purified from mouse ascites fluids or tissue culture supernatant by affinity chromatography (protein A/G)
Conjugation:	HRP
Storage:	Store at -20°C as received.
Stability:	Stable for 12 months from date of receipt.
Predicted Protein Size:	17.9 kDa
Gene Name:	twist family bHLH transcription factor 2
Database Link:	<a href="#">NP_476527</a> <a href="#">Entrez Gene 13345 Mouse</a> <a href="#">Entrez Gene 59327 Rat</a> <a href="#">Entrez Gene 117581 Human</a> <a href="#">Q8WVJ9</a>
Background:	Basic helix-loop-helix (bHLH) transcription factors have been implicated in cell lineage determination and differentiation. The protein encoded by this gene is a bHLH transcription factor and shares similarity with another bHLH transcription factor, Twist. It is thought that during osteoblast development this protein may inhibit osteoblast maturation and maintain cells in a preosteoblast phenotype. Two transcript variants encoding the same protein have been found for this gene. [provided by RefSeq, Dec 2012]

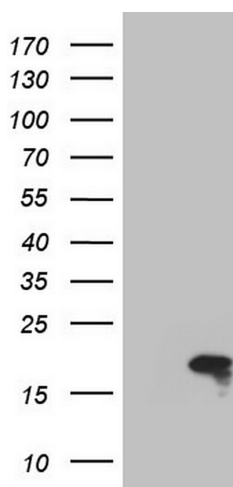


[View online »](#)

Synonyms: AMS; BBRSAY; bHLHa39; DERMO1; FFDD3; SETLSS

Protein Families: Druggable Genome, Transcription Factors

### Product images:



HEK293T cells were transfected with the pCMV6-ENTRY control (Left lane) or pCMV6-ENTRY TWIST2 ([RC205006], Right lane) cDNA for 48 hrs and lysed. Equivalent amounts of cell lysates (5 ug per lane) were separated by SDS-PAGE and immunoblotted with anti-TWIST2. Positive lysates [LY403298] (100ug) and [LC403298] (20ug) can be purchased separately from OriGene.