

## Product datasheet for **TA805373BM**

### TACC1 Mouse Monoclonal Antibody (HRP conjugated) [Clone ID: OTI1H2]

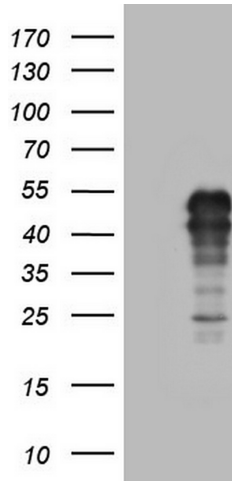
#### Product data:

Product Type:	Primary Antibodies
Clone Name:	OTI1H2
Applications:	IHC, WB
Recommended Dilution:	WB 1:2000, IHC 1:150
Reactivity:	Human
Host:	Mouse
Isotype:	IgG1
Clonality:	Monoclonal
Immunogen:	Full length human recombinant protein of human TACC1 (NP_001116296) produced in HEK293T cell.
Formulation:	PBS (pH 7.3) containing 1% BSA, 50% glycerol.
Concentration:	0.5 mg/ml
Purification:	Purified from mouse ascites fluids or tissue culture supernatant by affinity chromatography (protein A/G)
Conjugation:	HRP
Storage:	Store at -20°C as received.
Stability:	Stable for 12 months from date of receipt.
Predicted Protein Size:	43.8 kDa
Gene Name:	transforming acidic coiled-coil containing protein 1
Database Link:	<a href="#">NP_001116296</a> <a href="#">Entrez Gene 6867 Human</a> <a href="#">O75410</a>
Background:	This locus may represent a breast cancer candidate gene. It is located close to FGFR1 on a region of chromosome 8 that is amplified in some breast cancers. Three transcript variants encoding different isoforms have been found for this gene. [provided by RefSeq, Apr 2009]
Synonyms:	Ga55

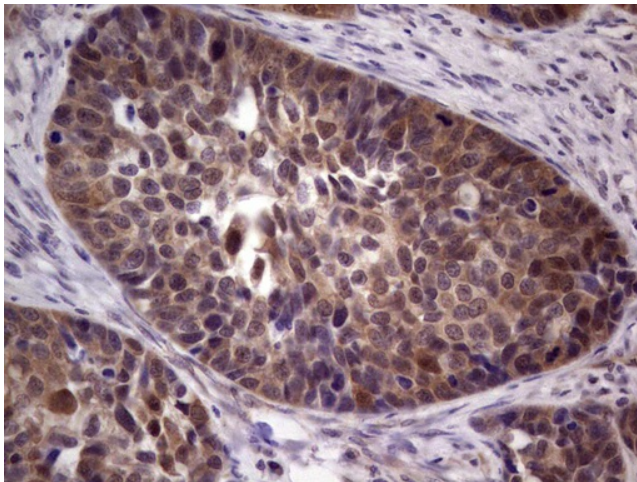


[View online »](#)

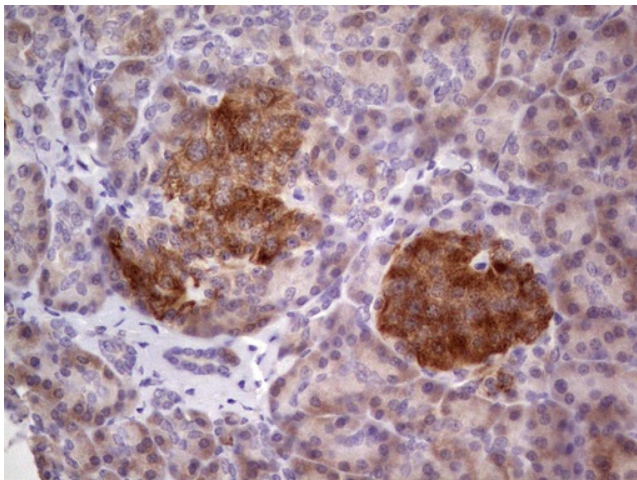
**Product images:**



HEK293T cells were transfected with the pCMV6-ENTRY control (Cat# [PS100001], Left lane) or pCMV6-ENTRY TACC1 (Cat# [RC225610], Right lane) cDNA for 48 hrs and lysed. Equivalent amounts of cell lysates (5 ug per lane) were separated by SDS-PAGE and immunoblotted with anti-TACC1(Cat# [TA805373]). Positive lysates [LY426566] (100ug) and [LC426566] (20ug) can be purchased separately from OriGene.



Immunohistochemical staining of paraffin-embedded Carcinoma of Human kidney tissue using anti-TACC1 mouse monoclonal antibody. (Heat-induced epitope retrieval by 1mM EDTA in 10mM Tris, pH8.5, 120°C for 3min, [TA805373])



Immunohistochemical staining of paraffin-embedded Human pancreas tissue within the normal limits using anti-TACC1 mouse monoclonal antibody. (Heat-induced epitope retrieval by 1mM EDTA in 10mM Tris, pH8.5, 120°C for 3min, [TA805373])

