

Product datasheet for **TA805281S**

GARS1 Mouse Monoclonal Antibody [Clone ID: OTI4G4]

Product data:

Product Type:	Primary Antibodies
Clone Name:	OTI4G4
Applications:	IHC
Recommended Dilution:	IHC 1:150
Reactivity:	Human, Mouse, Rat
Host:	Mouse
Isotype:	IgG1
Clonality:	Monoclonal
Immunogen:	Full length human recombinant protein of human GARS (NP_002038) produced in HEK293T cell.
Formulation:	PBS (pH 7.3) containing 1% BSA, 50% glycerol and 0.02% sodium azide.
Concentration:	1 mg/ml
Purification:	Purified from mouse ascites fluids or tissue culture supernatant by affinity chromatography (protein A/G)
Conjugation:	Unconjugated
Storage:	Store at -20°C as received.
Stability:	Stable for 12 months from date of receipt.
Predicted Protein Size:	83 kDa
Gene Name:	glycyl-tRNA synthetase
Database Link:	NP_002038 Entrez Gene 297113 Rat Entrez Gene 353172 Mouse Entrez Gene 2617 Human P41250
Background:	This gene encodes glycyl-tRNA synthetase, one of the aminoacyl-tRNA synthetases that charge tRNAs with their cognate amino acids. The encoded enzyme is an (alpha) ₂ dimer which belongs to the class II family of tRNA synthetases. It has been shown to be a target of autoantibodies in the human autoimmune diseases, polymyositis or dermatomyositis. [provided by RefSeq, Jul 2008]

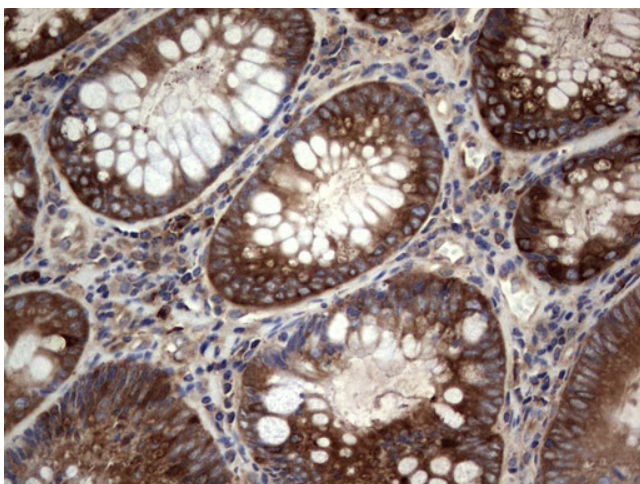


[View online »](#)

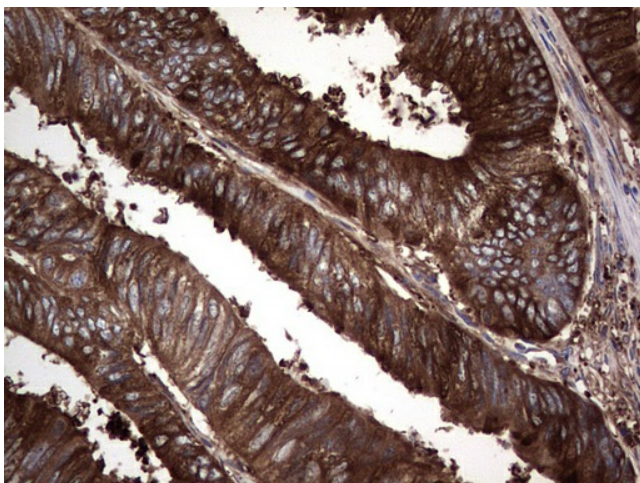
Synonyms: CMT2D; DSMAV; GlyRS; HMN5; SMAD1

Protein Pathways: Aminoacyl-tRNA biosynthesis

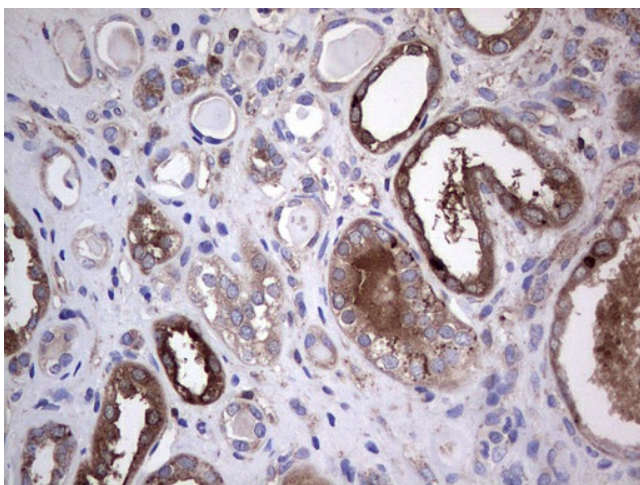
Product images:



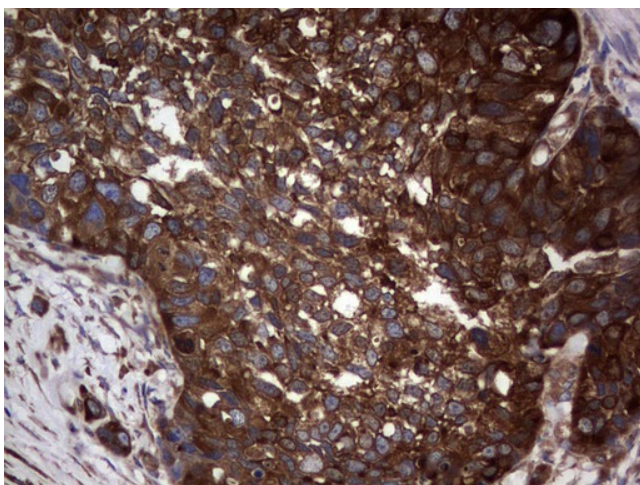
Immunohistochemical staining of paraffin-embedded Human colon tissue within the normal limits using anti-GARS mouse monoclonal antibody. (Heat-induced epitope retrieval by 1mM EDTA in 10mM Tris, pH8.5, 120°C for 3min, [TA805281])



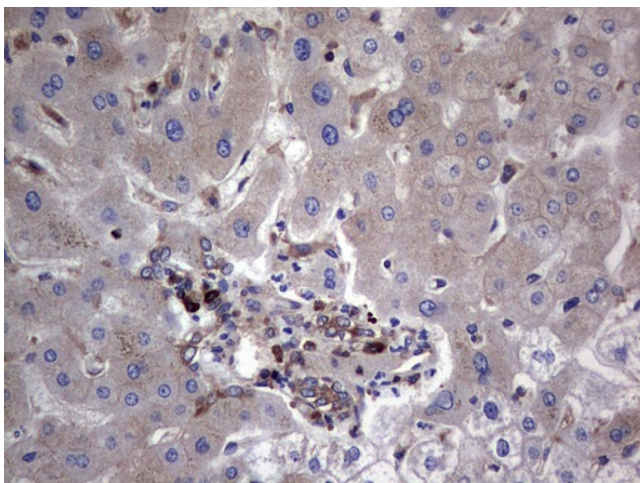
Immunohistochemical staining of paraffin-embedded Adenocarcinoma of Human colon tissue using anti-GARS mouse monoclonal antibody. (Heat-induced epitope retrieval by 1mM EDTA in 10mM Tris, pH8.5, 120°C for 3min, [TA805281])



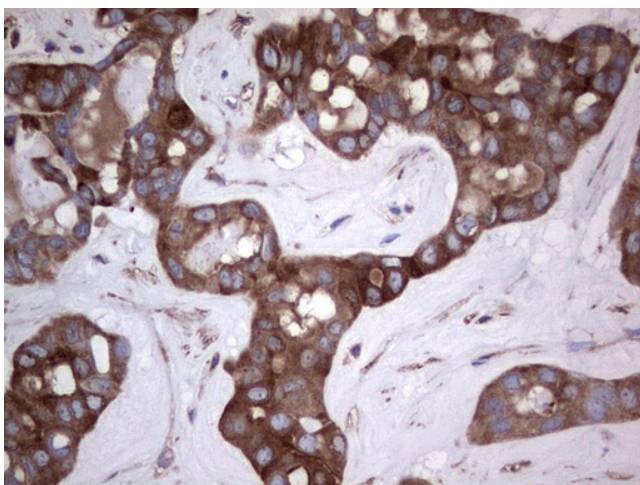
Immunohistochemical staining of paraffin-embedded Human Kidney tissue within the normal limits using anti-GARS mouse monoclonal antibody. (Heat-induced epitope retrieval by 1mM EDTA in 10mM Tris, pH8.5, 120°C for 3min, [TA805281])



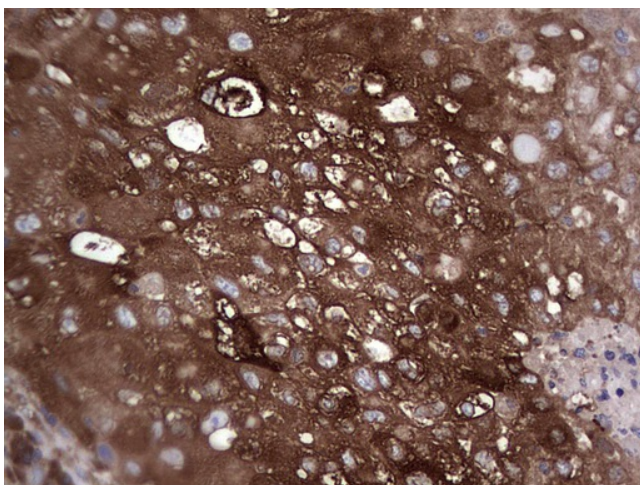
Immunohistochemical staining of paraffin-embedded Carcinoma of Human kidney tissue using anti-GARS mouse monoclonal antibody. (Heat-induced epitope retrieval by 1mM EDTA in 10mM Tris, pH8.5, 120°C for 3min, [TA805281])



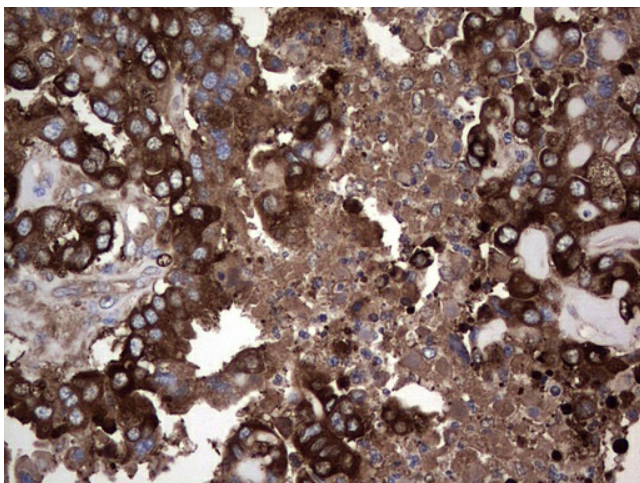
Immunohistochemical staining of paraffin-embedded Human liver tissue within the normal limits using anti-GARS mouse monoclonal antibody. (Heat-induced epitope retrieval by 1mM EDTA in 10mM Tris, pH8.5, 120°C for 3min, [TA805281])



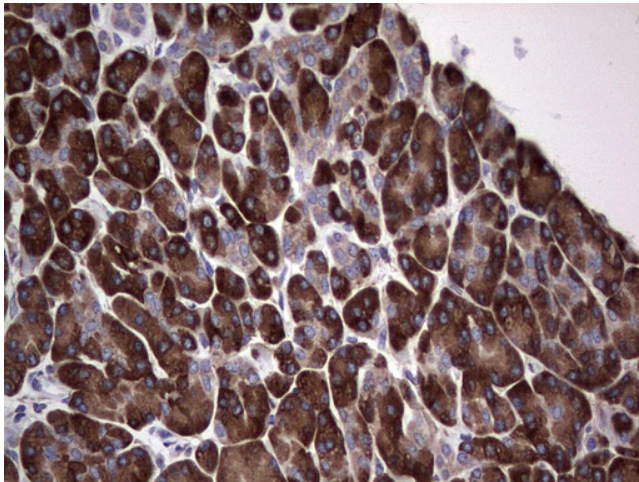
Immunohistochemical staining of paraffin-embedded Carcinoma of Human liver tissue using anti-GARS mouse monoclonal antibody. (Heat-induced epitope retrieval by 1mM EDTA in 10mM Tris, pH8.5, 120°C for 3min, [TA805281])



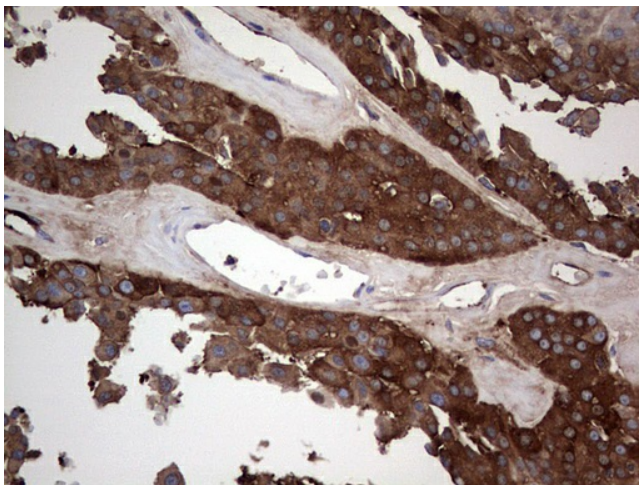
Immunohistochemical staining of paraffin-embedded Carcinoma of Human lung tissue using anti-GARS mouse monoclonal antibody. (Heat-induced epitope retrieval by 1mM EDTA in 10mM Tris, pH8.5, 120°C for 3min, [TA805281])



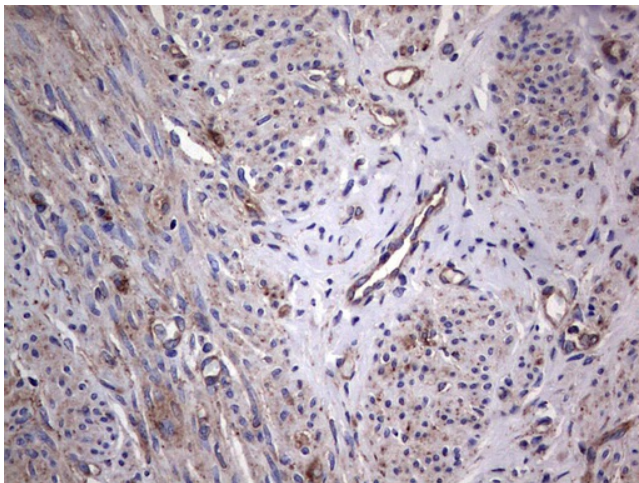
Immunohistochemical staining of paraffin-embedded Adenocarcinoma of Human ovary tissue using anti-GARS mouse monoclonal antibody. (Heat-induced epitope retrieval by 1mM EDTA in 10mM Tris, pH8.5, 120°C for 3min, [TA805281])



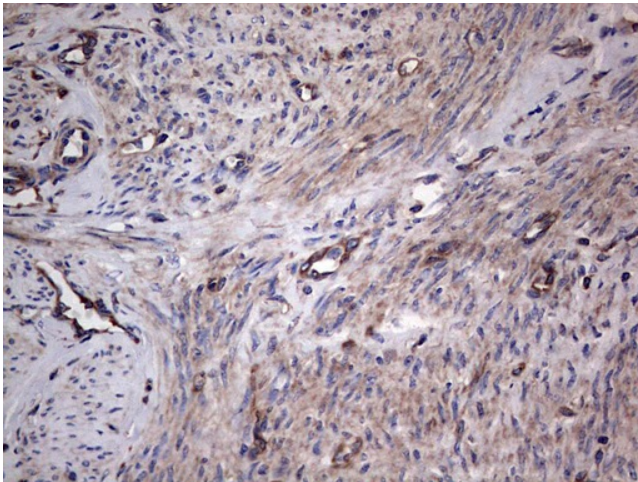
Immunohistochemical staining of paraffin-embedded Human pancreas tissue within the normal limits using anti-GARS mouse monoclonal antibody. (Heat-induced epitope retrieval by 1mM EDTA in 10mM Tris, pH8.5, 120°C for 3min, [TA805281])



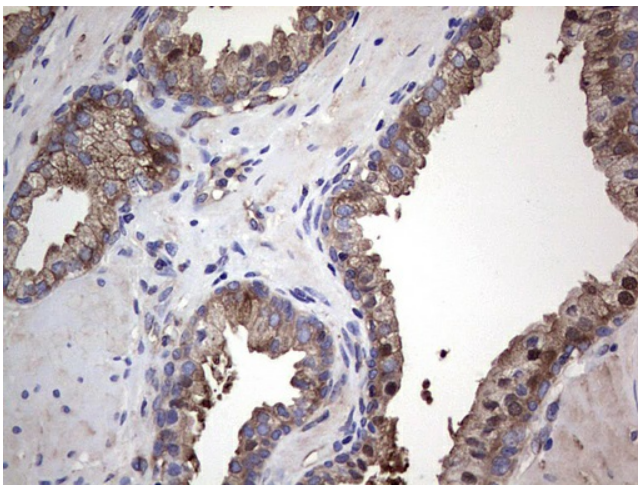
Immunohistochemical staining of paraffin-embedded Carcinoma of Human thyroid tissue using anti-GARS mouse monoclonal antibody. (Heat-induced epitope retrieval by 1mM EDTA in 10mM Tris, pH8.5, 120°C for 3min, [TA805281])



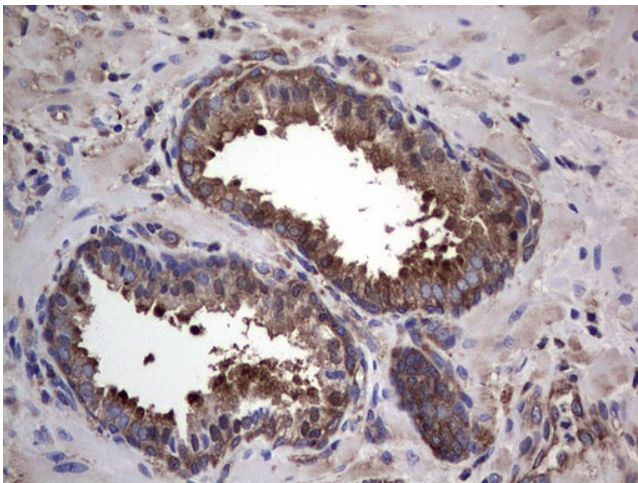
Immunohistochemical staining of paraffin-embedded Human endometrium tissue within the normal limits using anti-GARS mouse monoclonal antibody. (Heat-induced epitope retrieval by 1mM EDTA in 10mM Tris, pH8.5, 120°C for 3min, [TA805281])



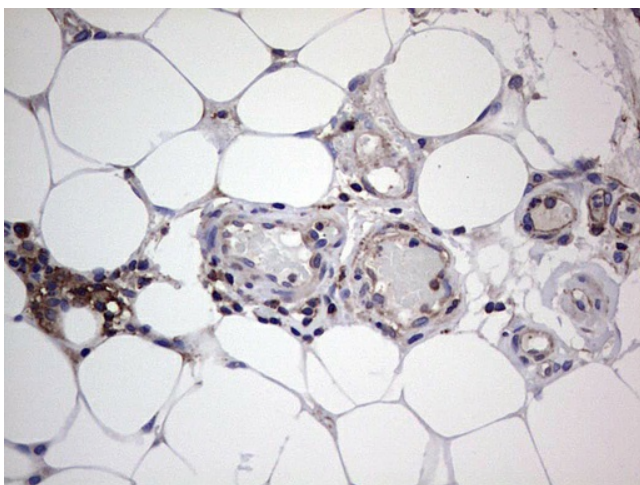
Immunohistochemical staining of paraffin-embedded Adenocarcinoma of Human endometrium tissue using anti-GARS mouse monoclonal antibody. (Heat-induced epitope retrieval by 1mM EDTA in 10mM Tris, pH8.5, 120°C for 3min, [TA805281])



Immunohistochemical staining of paraffin-embedded Human prostate tissue within the normal limits using anti-GARS mouse monoclonal antibody. (Heat-induced epitope retrieval by 1mM EDTA in 10mM Tris, pH8.5, 120°C for 3min, [TA805281])



Immunohistochemical staining of paraffin-embedded Carcinoma of Human prostate tissue using anti-GARS mouse monoclonal antibody. (Heat-induced epitope retrieval by 1mM EDTA in 10mM Tris, pH8.5, 120°C for 3min, [TA805281])



Immunohistochemical staining of paraffin-embedded Carcinoma of Human bladder tissue using anti-GARS mouse monoclonal antibody. (Heat-induced epitope retrieval by 1mM EDTA in 10mM Tris, pH8.5, 120°C for 3min, [TA805281])