

Product datasheet for **TA805276AM**

Apolipoprotein E (APOE) Mouse Monoclonal Antibody (Biotin conjugated) [Clone ID: OTI6B9]

Product data:

Product Type:	Primary Antibodies
Clone Name:	OTI6B9
Applications:	WB
Recommended Dilution:	WB 1:2000
Reactivity:	Human
Host:	Mouse
Isotype:	IgG1
Clonality:	Monoclonal
Immunogen:	Full length human recombinant protein of human APOE (NP_000032) produced in HEK293T cell.
Formulation:	PBS (pH 7.3) containing 1% BSA, 50% glycerol and 0.02% sodium azide.
Concentration:	0.5 mg/ml
Purification:	Purified from mouse ascites fluids or tissue culture supernatant by affinity chromatography (protein A/G)
Conjugation:	Biotin
Storage:	Store at -20°C as received.
Stability:	Stable for 12 months from date of receipt.
Predicted Protein Size:	34.2 kDa
Gene Name:	apolipoprotein E
Database Link:	NP_000032 Entrez Gene 348 Human P02649



[View online »](#)

Background:

Chylomicron remnants and very low density lipoprotein (VLDL) remnants are rapidly removed from the circulation by receptor-mediated endocytosis in the liver. Apolipoprotein E, a main apoprotein of the chylomicron, binds to a specific receptor on liver cells and peripheral cells. ApoE is essential for the normal catabolism of triglyceride-rich lipoprotein constituents. The APOE gene is mapped to chromosome 19 in a cluster with APOC1 and APOC2. Defects in apolipoprotein E result in familial dysbetalipoproteinemia, or type III hyperlipoproteinemia (HLP III), in which increased plasma cholesterol and triglycerides are the consequence of impaired clearance of chylomicron and VLDL remnants. [provided by RefSeq, Jul 2008]

Synonyms:

AD2; APO-E; LDLQC5; LPG

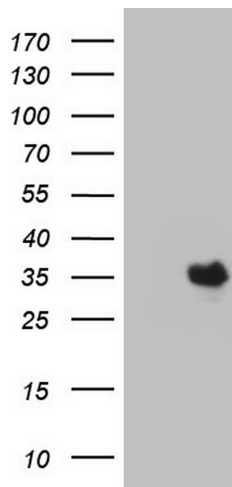
Protein Families:

Adult stem cells, Druggable Genome, Secreted Protein, Stem cell - Pluripotency

Protein Pathways:

Alzheimer's disease

Product images:



HEK293T cells were transfected with the pCMV6-ENTRY control (Left lane) or pCMV6-ENTRY APOE ([RC200395], Right lane) cDNA for 48 hrs and lysed. Equivalent amounts of cell lysates (5 ug per lane) were separated by SDS-PAGE and immunoblotted with anti-APOE. Positive lysates [LY424959] (100ug) and [LC424959] (20ug) can be purchased separately from OriGene.