

## Product datasheet for **TA805274BM**

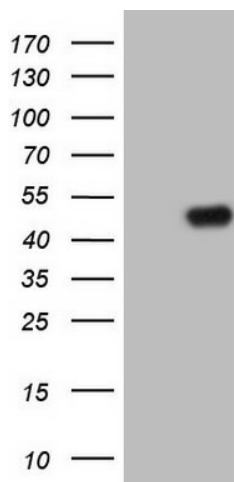
### TRIB1 Mouse Monoclonal Antibody (HRP conjugated) [Clone ID: OT18C8]

#### Product data:

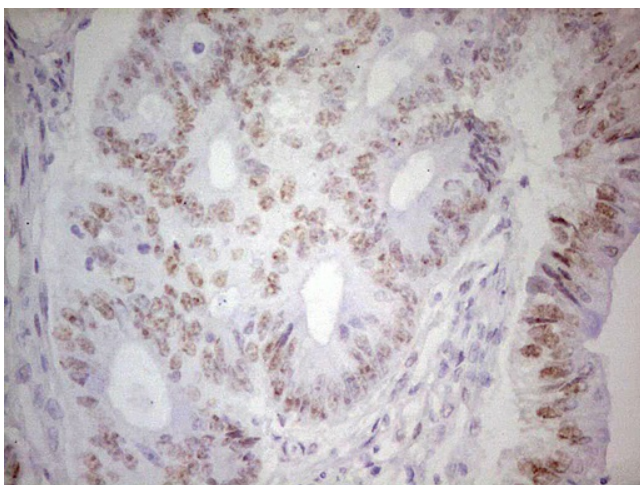
Product Type:	Primary Antibodies
Clone Name:	OT18C8
Applications:	IHC, WB
Recommended Dilution:	WB 1:2000, IHC 1:150
Reactivity:	Human, Mouse, Rat
Host:	Mouse
Isotype:	IgG1
Clonality:	Monoclonal
Immunogen:	Full length human recombinant protein of human TRIB1 (NP_079471) produced in HEK293T cell.
Formulation:	PBS (pH 7.3) containing 1% BSA, 50% glycerol.
Concentration:	0.5 mg/ml
Purification:	Purified from mouse ascites fluids or tissue culture supernatant by affinity chromatography (protein A/G)
Conjugation:	HRP
Storage:	Store at -20°C as received.
Stability:	Stable for 12 months from date of receipt.
Gene Name:	tribbles pseudokinase 1
Database Link:	<a href="#">NP_079471</a> <a href="#">Entrez Gene 78969 Rat</a> <a href="#">Entrez Gene 211770 Mouse</a> <a href="#">Entrez Gene 10221 Human</a> <a href="#">Q96RU8</a>
Synonyms:	C8FW; GIG-2; GIG2; SKIP1; TRB-1; TRB1
Protein Families:	Druggable Genome, Protein Kinase



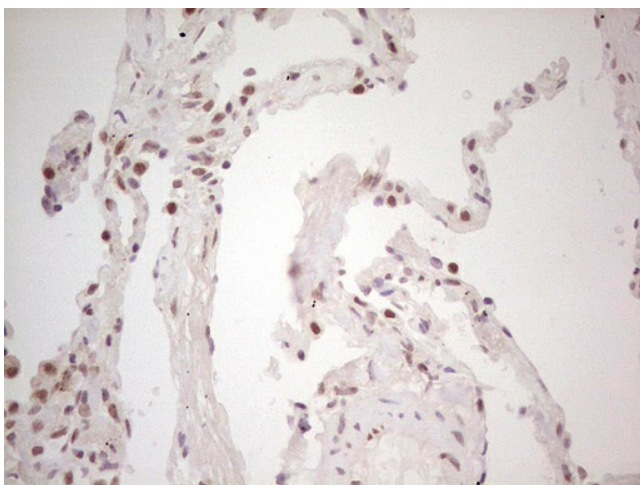
[View online »](#)

**Product images:**

HEK293T cells were transfected with the pCMV6-ENTRY control (Cat# [PS100001], Left lane) or pCMV6-ENTRY TRIB1 (Cat# [RC209219], Right lane) cDNA for 48 hrs and lysed. Equivalent amounts of cell lysates (5 ug per lane) were separated by SDS-PAGE and immunoblotted with anti-TRIB1 (Cat# [TA805274]). Positive lysates [LY410846] (100ug) and [LC410846] (20ug) can be purchased separately from OriGene.



Immunohistochemical staining of paraffin-embedded Adenocarcinoma of Human colon tissue using anti-TRIB1 mouse monoclonal antibody. (Heat-induced epitope retrieval by 1mM EDTA in 10mM Tris, pH8.5, 120°C for 3min, [TA805274])



Immunohistochemical staining of paraffin-embedded Human lung tissue within the normal limits using anti-TRIB1 mouse monoclonal antibody. (Heat-induced epitope retrieval by 1mM EDTA in 10mM Tris, pH8.5, 120°C for 3min, [TA805274])