

Product datasheet for **TA805264M**

TFPI2 Mouse Monoclonal Antibody [Clone ID: OTI1G10]

Product data:

Product Type:	Primary Antibodies
Clone Name:	OTI1G10
Applications:	IHC, WB
Recommended Dilution:	WB 1:500~2000, IHC 1:150
Reactivity:	Human
Host:	Mouse
Isotype:	IgG2a
Clonality:	Monoclonal
Immunogen:	Human recombinant protein fragment corresponding to amino acids 23-235 of human TFPI2 (NP_006519) produced in E.coli.
Formulation:	PBS (pH 7.3) containing 1% BSA, 50% glycerol and 0.02% sodium azide.
Concentration:	1 mg/ml
Purification:	Purified from mouse ascites fluids or tissue culture supernatant by affinity chromatography (protein A/G)
Conjugation:	Unconjugated
Storage:	Store at -20°C as received.
Stability:	Stable for 12 months from date of receipt.
Predicted Protein Size:	27.4 kDa
Gene Name:	tissue factor pathway inhibitor 2
Database Link:	NP_006519 Entrez Gene 7980 Human P48307
Background:	This gene encodes a member of the Kunitz-type serine proteinase inhibitor family. The protein can inhibit a variety of serine proteases including factor VIIa/tissue factor, factor Xa, plasmin, trypsin, chymotrypsin and plasma kallikrein. This gene has been identified as a tumor suppressor gene in several types of cancer. Alternative splicing results in multiple transcript variants. [provided by RefSeq, Aug 2012]

[View online »](#)

Synonyms: PP5; REF1; TFPI-2

Protein Families: Secreted Protein

Product images:

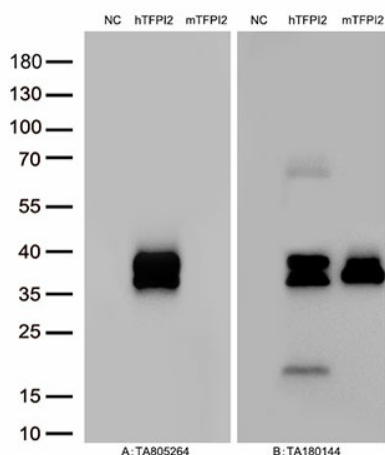
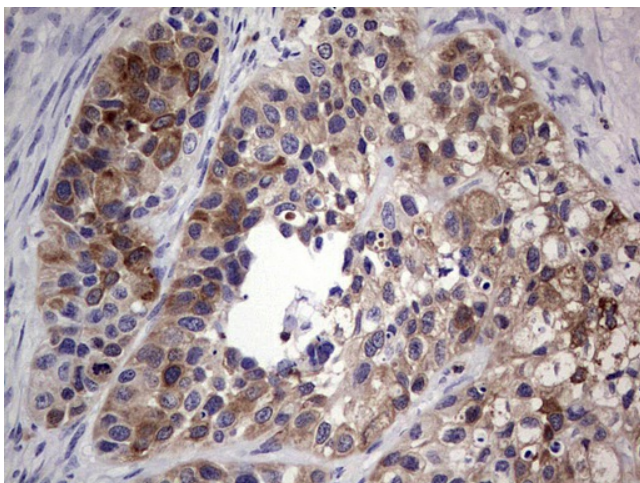
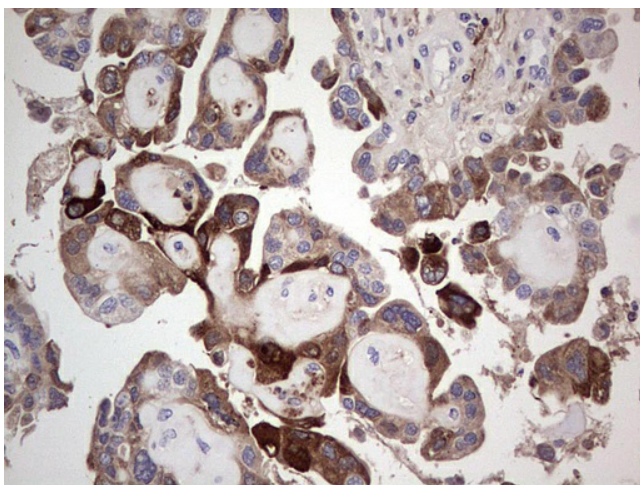


Figure A, Western blot analysis of overexpressed lysates (25ug per lane) from HEK293T cells transfected with empty plasmid ([PS100001], NC), human TFPI2 plasmid ([RC202760], hTFPI2), mouse TFPI2 plasmid ([MR202782], mTFPI2), using anti-TFPI2 antibody [TA805264] (1:500). Figure B, Western blot analysis of the same samples as figure A with anti-DDK antibody [TA180144], 1:1000)



Immunohistochemical staining of paraffin-embedded Carcinoma of Human kidney tissue using anti-TFPI2 mouse monoclonal antibody. Heat-induced epitope retrieval by EDTA solution buffer pH 8.0 at 120°C for 3 min.



Immunohistochemical staining of paraffin-embedded Adenocarcinoma of Human ovary tissue using anti-TFPI2 mouse monoclonal antibody. Heat-induced epitope retrieval by EDTA solution buffer pH 8.0 at 120°C for 3 min.