

Product datasheet for **TA805260BM**

Mesothelin (MSLN) Mouse Monoclonal Antibody (HRP conjugated) [Clone ID: OTI1A6]

Product data:

| | |
|-------------------------|---|
| Product Type: | Primary Antibodies |
| Clone Name: | OTI1A6 |
| Applications: | LMNX, WB |
| Recommended Dilution: | WB 1:2000 |
| Reactivity: | Human |
| Host: | Mouse |
| Isotype: | IgG1 |
| Clonality: | Monoclonal |
| Immunogen: | Human recombinant protein fragment corresponding to amino acids 270-493 of human MSLN (NP_005814) produced in E.coli. |
| Formulation: | PBS (pH 7.3) containing 1% BSA, 50% glycerol. |
| Concentration: | 0.5 mg/ml |
| Purification: | Purified from mouse ascites fluids or tissue culture supernatant by affinity chromatography (protein A/G) |
| Conjugation: | HRP |
| Storage: | Store at -20°C as received. |
| Stability: | Stable for 12 months from date of receipt. |
| Predicted Protein Size: | 62.7 kDa |
| Gene Name: | mesothelin |
| Database Link: | NP_005814 Entrez Gene 10232 Human Q13421 |



[View online »](#)

Background:

This gene encodes a precursor protein that is cleaved into two products, megakaryocyte potentiating factor and mesothelin. Megakaryocyte potentiation factor functions as a cytokine that can stimulate colony formation in bone marrow megakaryocytes. Mesothelin is a glycosylphosphatidylinositol-anchored cell-surface protein that may function as a cell adhesion protein. This protein is overexpressed in epithelial mesotheliomas, ovarian cancers and in specific squamous cell carcinomas. Alternative splicing results in multiple transcript variants. [provided by RefSeq, Apr 2010]

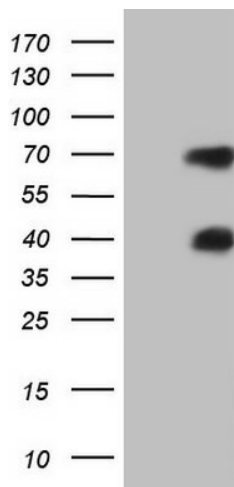
Synonyms:

MPF; SMRP

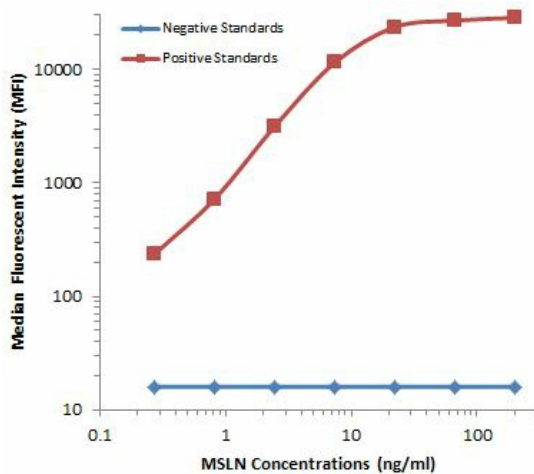
Protein Families:

Druggable Genome, Secreted Protein, Transmembrane

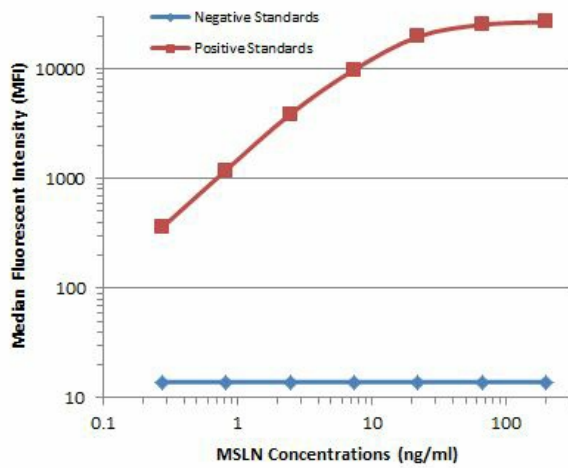
Product images:



HEK293T cells were transfected with the pCMV6-ENTRY control (Left lane) or pCMV6-ENTRY MSLN ([RC202532], Right lane) cDNA for 48 hrs and lysed. Equivalent amounts of cell lysates (5 ug per lane) were separated by SDS-PAGE and immunoblotted with anti-MSLN (1:2000). Positive lysates [LY401768] (100ug) and [LC401768] (20ug) can be purchased separately from OriGene.



MSLN Luminex ELISA with 1A6 Capture ([TA805260]) and 8H7 Detection ([TA805262]) Antibodies. Substrate used: Recombinant Human MSLN domain expressed in E.coli.



MSLN Luminex ELISA with 1A6 Capture ([TA805260]) and 3E10 Detection ([TA805261]) Antibodies. Substrate used: Recombinant Human MSLN domain expressed in E.coli.