

## Product datasheet for **TA805260AM**

### Mesothelin (MSLN) Mouse Monoclonal Antibody (Biotin conjugated) [Clone ID: OTI1A6]

#### Product data:

Product Type:	Primary Antibodies
Clone Name:	OTI1A6
Applications:	LMNX, WB
Recommended Dilution:	WB 1:2000
Reactivity:	Human
Host:	Mouse
Isotype:	IgG1
Clonality:	Monoclonal
Immunogen:	Human recombinant protein fragment corresponding to amino acids 270-493 of human MSLN (NP_005814) produced in E.coli.
Formulation:	PBS (pH 7.3) containing 1% BSA, 50% glycerol and 0.02% sodium azide.
Concentration:	0.5 mg/ml
Purification:	Purified from mouse ascites fluids or tissue culture supernatant by affinity chromatography (protein A/G)
Conjugation:	Biotin
Storage:	Store at -20°C as received.
Stability:	Stable for 12 months from date of receipt.
Predicted Protein Size:	62.7 kDa
Gene Name:	mesothelin
Database Link:	<a href="#">NP_005814</a> <a href="#">Entrez Gene 10232 Human</a> <a href="#">Q13421</a>



[View online »](#)

**Background:**

This gene encodes a precursor protein that is cleaved into two products, megakaryocyte potentiating factor and mesothelin. Megakaryocyte potentiation factor functions as a cytokine that can stimulate colony formation in bone marrow megakaryocytes. Mesothelin is a glycosylphosphatidylinositol-anchored cell-surface protein that may function as a cell adhesion protein. This protein is overexpressed in epithelial mesotheliomas, ovarian cancers and in specific squamous cell carcinomas. Alternative splicing results in multiple transcript variants. [provided by RefSeq, Apr 2010]

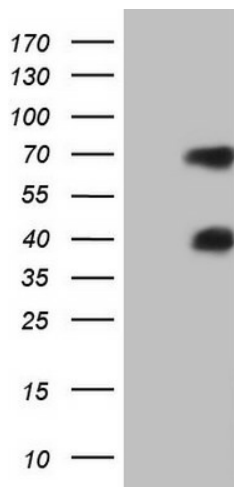
**Synonyms:**

MPF; SMRP

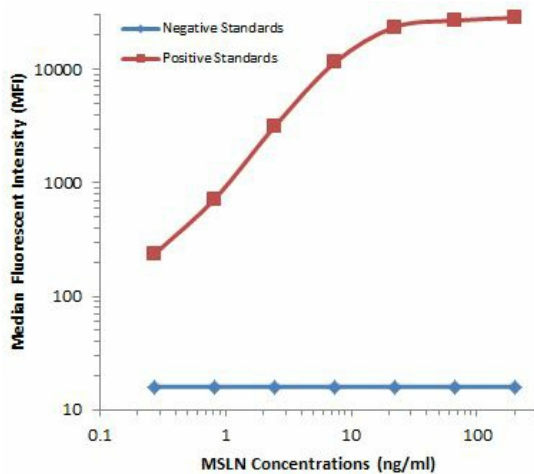
**Protein Families:**

Druggable Genome, Secreted Protein, Transmembrane

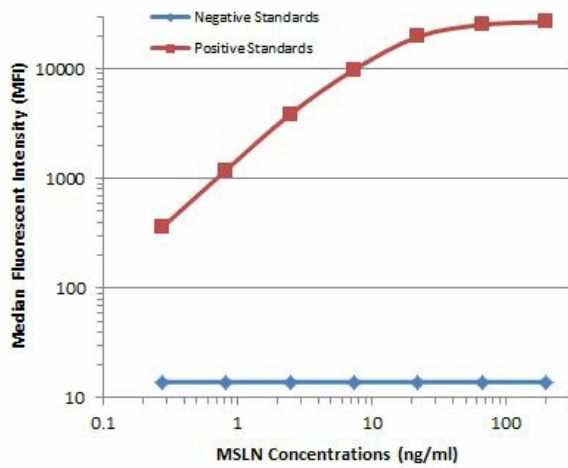
**Product images:**



HEK293T cells were transfected with the pCMV6-ENTRY control (Left lane) or pCMV6-ENTRY MSLN ([RC202532], Right lane) cDNA for 48 hrs and lysed. Equivalent amounts of cell lysates (5 ug per lane) were separated by SDS-PAGE and immunoblotted with anti-MSLN (1:2000). Positive lysates [LY401768] (100ug) and [LC401768] (20ug) can be purchased separately from OriGene.



MSLN Luminex ELISA with 1A6 Capture ([TA805260]) and 8H7 Detection ([TA805262]) Antibodies. Substrate used: Recombinant Human MSLN domain expressed in E.coli.



MSLN Luminex ELISA with 1A6 Capture ([TA805260]) and 3E10 Detection ([TA805261]) Antibodies. Substrate used: Recombinant Human MSLN domain expressed in E.coli.